

地址 (Add): 浙江省台州市路桥区蓬街镇环镇西路 99 号浙江景耀数控科技有限公司
Zhejiang Jingyao CNC Technology Co., Ltd. No. 99 Huanzhen
West Road, Pengjie Town, Luqiao District, Taizhou City, Zhejiang
Province, China
电话 (Tel): +86-576-80235999 +86-13957640806
传真 (Fax): +86-576-82755456
网址 (Web): <http://www.zjjnyo.com>
<http://www.jy-sk.cn>
<http://chinajingyao.en.alibaba.com>
邮箱 E-mail: zjtzyjsk@126.com



微信公共订阅号

样册产品数据如有变动, 恕不另行通知, 最终解释权归本公司所有。
Kind of product data are subject to change, without notice, the final interpretation of the
company.

2019
501a

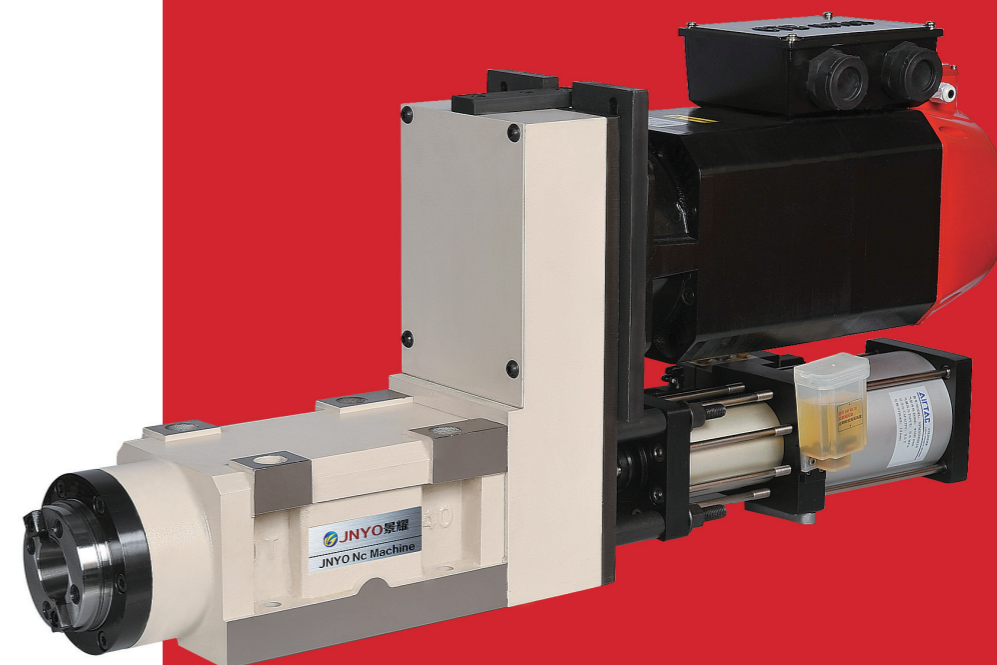
2019
501a

中国机床工具工业协会 组合机床分会理事单位



主轴动力头 & 数控滑台
Tapping Power Head & CNC Sliding table

智能制造 & 模块化组合
Aggregation Of Units And Modules



浙江景耀数控科技有限公司
ZHEJIANG JING YAO NUMERICAL CONTROL TECHNOLOGY CO., LTD.

企业简介 Company profile



本公司专业生产精密镗铣动力头系列、数控（硬轨、线轨）滑台系列、数控专机，并根据各行业的产品生产特性提供模块化组合设计、制造方案，有效提高生产能力。

生产的产品均采用立式、卧式加工中心生产，三维检测仪检测，主要部件经热处理后进行硬度检测。产品加工精度高，传动轻松，外表美观，设计合理。生产的产品广泛用于生产汽车零部件、发动机部件、农业机械、工程机械、纺织机械、水暖配件、管道配件、化工设备配件、军工、模具等行业。

产品自投放市场以来，深受国内外广大客户的一致好评。

本厂代理并销售国内外名牌数控控制部分、传动部分、刀（量）具等精密配件。在充分利用周边“中国刀量具市场”、“中国机电五金城”、“台州自动化设备市场”等资源优势的基础上，结合内部技术经验为企业提供线上线下（O₂O）一站式采购平台，并在全国各大城市设立展示经销处。

Our company specially manufactures the sophisticated boring and milling power head, numerical control (hard rail and wire rail) sliding table and numerical control machine and provides the modular combination design and manufacturing scheme to effectively improve the production capacity in accordance with the product characteristics in each industry.

The products provided by the Jingyao Numerical Control Company are manufactured at the vertical and horizontal machining center and are detected by using three-dimensional detectors. The hardness test shall be made for main parts after thermal treatment. The products have very high machining precision, easy transmission, specious surface and reasonable design. The manufactured product is widely used in the auto parts, engine parts, agricultural machinery, engineering machinery, textile machinery, water heating fittings, pipe fittings, chemical equipment parts, military project and mould manufacturing industry.

Since the products are put on the market, these products have been highly commended by the domestic and foreign customers.

The company mainly sells the control parts, driving parts, cutting tools (measuring implement) and other precision parts of the domestic and overseas brand. On the basis of the resource superiority of taking full advantage of the “Chinese Cutting Tool and Measuring Implement Market”, “Chinese Mechanical and Electrical Hardware City”, “Taizhou Automation Equipment Market”, and by combination with the internal technology experience, the Company will provide on-line and off-line (O₂O) one-stop purchasing platform and establish the distribution department in the major cities.

Company tenet: creation of value for customer, creation of opportunities for employees, and creation of benefits for the enterprise.

We firmly believe that we will surely be able to open up a new situation where we can get win-win results and the mutual benefits with the new and old customers through unremitting efforts and pursuits.

Looking forward to cooperating with you sincerely and creating a brilliant future!

目 录 CONTENTS



镗铣主轴头 Boring & Milling Head Unit

XT20	
镗铣主轴头 Boring & Milling Head Unit	01
镗铣主轴头配电机 Boring & Milling Head Unit With The Motor	02
XT30-1	
镗铣主轴头 Boring & Milling Head Unit	03
镗铣主轴头配电机 Boring & Milling Head Unit With The Motor	04
XT30-2	
镗铣主轴头 Boring & Milling Head Unit	05
镗铣主轴头配电机 Boring & Milling Head Unit With The Motor	06
ZG30-2	
钻攻动力头 Drilling & Tapping Power Head	07
钻攻动力头配电机 Drilling & Tapping Power Head With The Motor	08
XT40-1	
镗铣主轴头 Boring & Milling Head Unit	09
镗铣主轴头配电机 Boring & Milling Head Unit With The Motor	10
镗铣主轴头配变速箱电机 Boring & Milling Spindle Head's Gearbox Motor	11
XT40-2	
镗铣主轴头 Boring & Milling Head Unit	12
镗铣主轴头配电机 Boring & Milling Head Unit With The Motor	13
镗铣主轴头配变速箱电机 Boring & Milling Spindle Head's Gearbox Motor	14
镗铣主轴头加强型 Enhanced Boring & Milling Spindle Head	15
镗铣主轴头配变速箱电机 + 自动换刀 Boring & Milling Spindle Head's Gearbox Motor+ATC	16
镗铣主轴头配电机 + 自动换刀 Boring & Milling Head Unit With The Motor+ATC	17
镗铣主轴头配电机 + 自动换刀 + 中心出水 Boring & Milling Head Unit With The Motor+ATC +CTS	18
XT50-2	
镗铣主轴头 Boring & Milling Head Unit	19
镗铣主轴头配电机 Boring & Milling Head Unit With The Motor	20
镗铣主轴头配电机 + 自动换刀 Boring & Milling Head Unit With The Motor+ATC	21
镗铣主轴头配电机 + 自动换刀 + 中心出水 Boring & Milling Head Unit With The Motor+ATC +CTS	22

数控线轨滑台 CNC Linear Guideway Sliding Table

LRS180	
数控线轨滑台 CNC Linear Guideway Sliding Table	24
LRS220	
数控线轨滑台 CNC Linear Guideway Sliding Table	25
LRS250	
数控线轨滑台 CNC Linear Guideway Sliding Table	26
LRS330	
数控线轨滑台 CNC Linear Guideway Sliding Table	27
VRS250	
数控立式线轨滑台 CNC Vertical Linear Guideway Sliding Table	28
CRS220	
数控十字线轨滑台 NC Cross rail slide	29
CRS300	
数控十字线轨滑台 NC Cross rail slide	30
特殊规格定制 Special Specifications For Customized	31

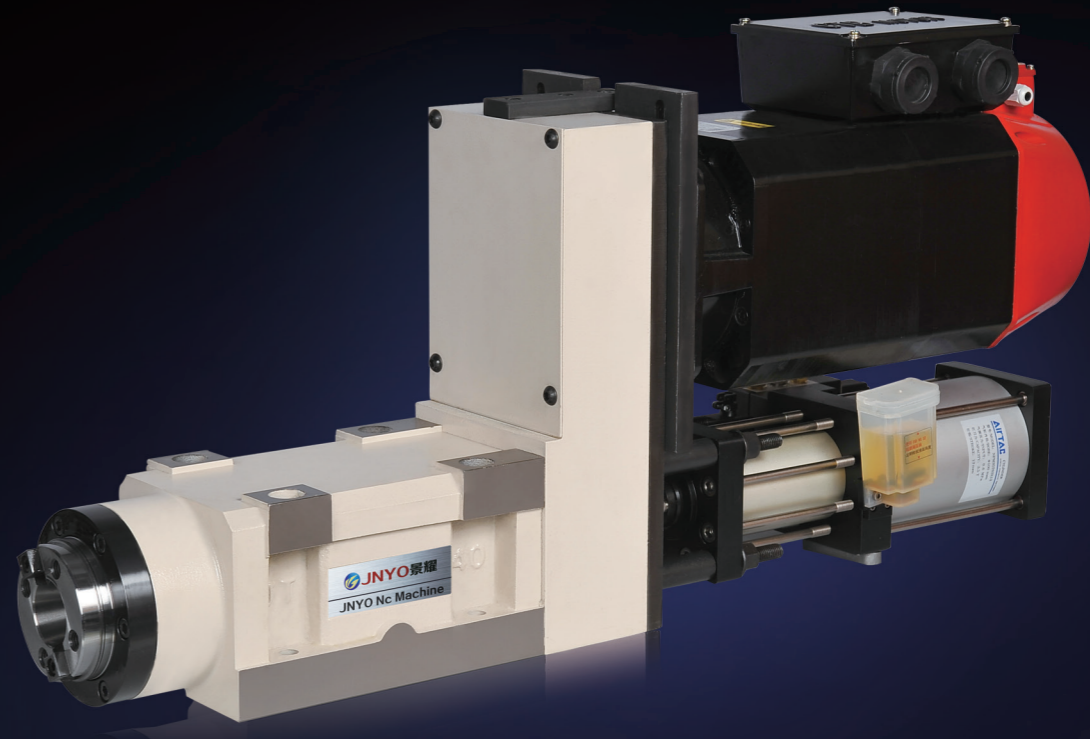
数控硬轨矩形滑台 CNC Hard Guideway Rectangle Sliding Table

URS220	
数控单向矩形滑台 CNC Single Direction Rectangle Sliding Table	33
URS250	
数控单向矩形滑台 CNC Single Direction Rectangle Sliding Table	34
URS300	
数控单向矩形滑台 CNC Single Direction Rectangle Sliding Table	35
URS360	
数控单向矩形滑台 CNC Single Direction Rectangle Sliding Table	36
URS420	
数控单向矩形滑台 CNC Single Direction Rectangle Sliding Table	37
URS500	
数控单向矩形滑台 CNC Single Direction Rectangle Sliding Table	38
BRS1812	
数控十字矩形滑台 CNC Cross Rectangle Sliding Table	39
BRS3015	
数控十字矩形滑台 CNC Cross Rectangle Sliding Table	40
BRS3020	
数控十字矩形滑台 CNC Cross Rectangle Sliding Table	41
BRS3520	
数控十字矩形滑台 CNC Cross Rectangle Sliding Table	42
BRS5040	
数控十字矩形滑台 CNC Cross Rectangle Sliding Table	43

配套件 Matching Kit



镗铣主轴头 Boring & Milling Head Unit



镗铣主轴头可选配多种主轴形式，应用到镗、铣、钻、攻、铰、磨等多个加工场合。镗铣主轴头适合安装于各种组合机床生产线、普通机床改造及复合中心机使用。产品加工精度高，传动更轻松，外表更美观，设计更合理。

The spindle head of boring and milling can match with several types of spindle and can be applied in several processing conditions, including boring, milling, drilling, tapping, twisting, grinding, etc. The spindle head of boring and milling can be installed on various machine production lines, common machine reformation and combination center machine. The accuracy of processed products is high, the transmission is easier, the appearance is more beautiful and the design is more scientific.

特 点 Characteristics

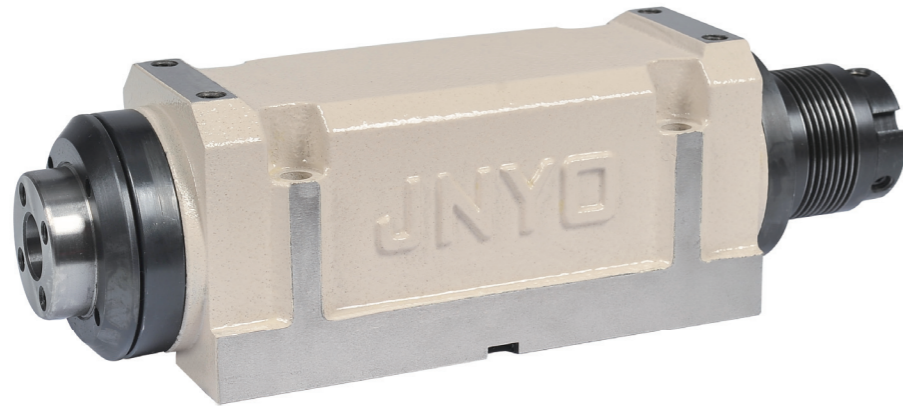
- 主轴承采用动密封非接触式多重迷宫防水结构设计，防止生产加工中切削液或灰尘、切屑等异物的外部侵入，保证轴承不受污染，确保轴承的寿命及精度。
Dynamic sealing non-touching multi-maze waterproof structure is adopted in the design of spindle head to prevent the external impurity of cutting fluid or dust, cutting scraps, etc. during production and processing, protect the bearing from contamination and assure the service lifespan and accuracy of the bearing.
 - 主轴后端可配置中心出水旋转接头，广泛应用到深孔钻削、高速铣削等领域。
Central water outtake rotating joint can be equipped at the end of the spindle, which can be widely used in deep hole cutting, and high-speed milling, etc.
 - 主轴头真圆度 $\leq 0.004\text{mm}$ ，易于实现高速化，动态 / 静态精度高，稳定性更好。
The real roundness of the spindle head $\leq 0.004\text{mm}$, which is easy for high-speed operation, high dynamic-static accuracy and good stability.
- 主轴承采用标准合金钢材料，经锻打、多次热处理、多次粗加工定形、再精加工、最终精密磨削等标准工艺制造。保证了主轴的耐用度和精度。
Standard alloy steel material is used for the spindle and goes through the standard technology procedures, including hammering, several rounds of thermal treatment, several rounds of rough processing and finishing, re-finish machining, final finish grinding and cutting, etc., to assure the durability and accuracy of the spindle.
 - 壳体精模高韧铸铁铸造，经人工震动时效及自然双重时效处理；降低应力增加抗变形能力和稳定性。
The housing is cast with accurate die and the cast iron of high toughness and processed by means of manual vibration aging and natural aging to reduce the stress and increase the deformation resistance performance and stability.
 - 结构紧凑，机械效率高，噪音低，震动小，精度高。
Compact structure, high mechanical efficiency, low noise, low vibration and high accuracy.
 - 运行平稳，没有冲击，使主轴轴承寿命得到延长。
Stable operation, no impact, prolongation of service life of the spindle.
- | | | | |
|----------------------------------------|----------------------------------------------------------------------------------|---|-------------------|
| 3C | 高速钻孔攻丝，轻切削面铣
High-speed boring and thread tapping, light cutting face milling | → | 高 速
High speed |
| 模具
Die | 硬钢材加工，曲面加工
Hard steel processing and curved surface processing | | |
| 航钛轻合金
Aviation titanium light alloy | 高速铣削，曲面加工
High-speed milling and curved surface processing | | |
| 汽机车
Steam engine car | 高速铣削，钻孔，攻丝，精密镗孔
Boring and thread tapping, Boring and thread tapping | | |
| 一般加工
General processing | 钻孔，攻丝，面铣，镗孔
Boring and thread tapping, Surface milling and hole boring | | |

XT20

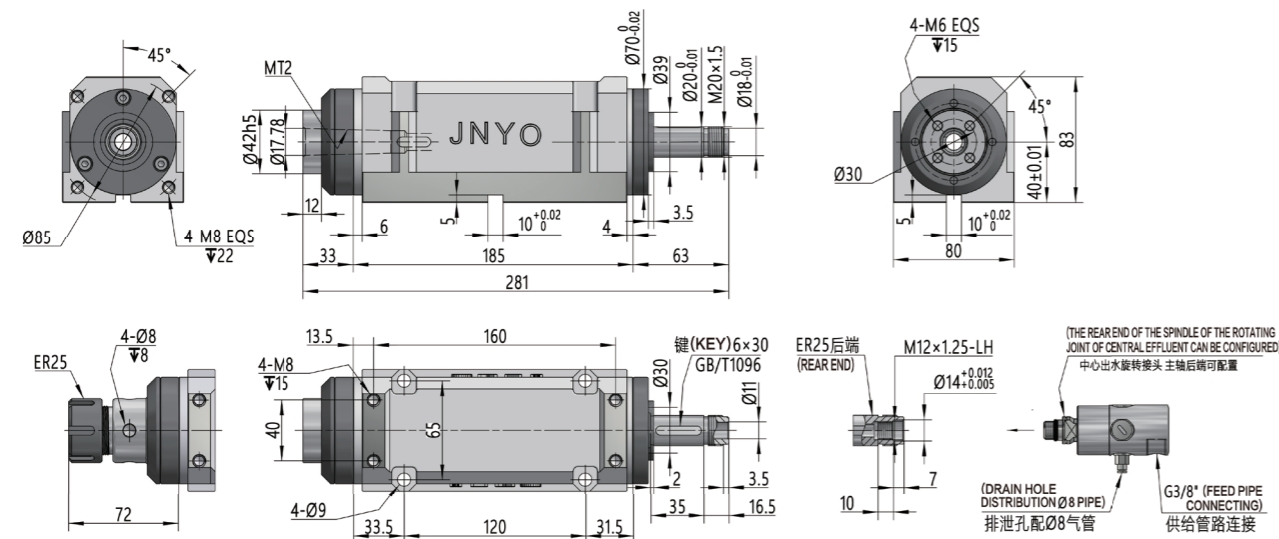
镗铣主轴头 Boring & Milling Head Unit

Made in China Spirit in Global

- XT20-MT2
- XT20-ER25



- XT20 主轴头主轴形式：
Spindle type of the XT20 spindle head:
- MT2 可直接放置莫氏 2 号带扁尾锥柄。
MT2# taper-shank with flat tail can be directly placed.
- ER25 夹持直柄刀具 $\Phi 1-\Phi 16\text{mm}$ 。
ER25 clamping cutter with straight shank $\Phi 1-\Phi 16\text{mm}$.



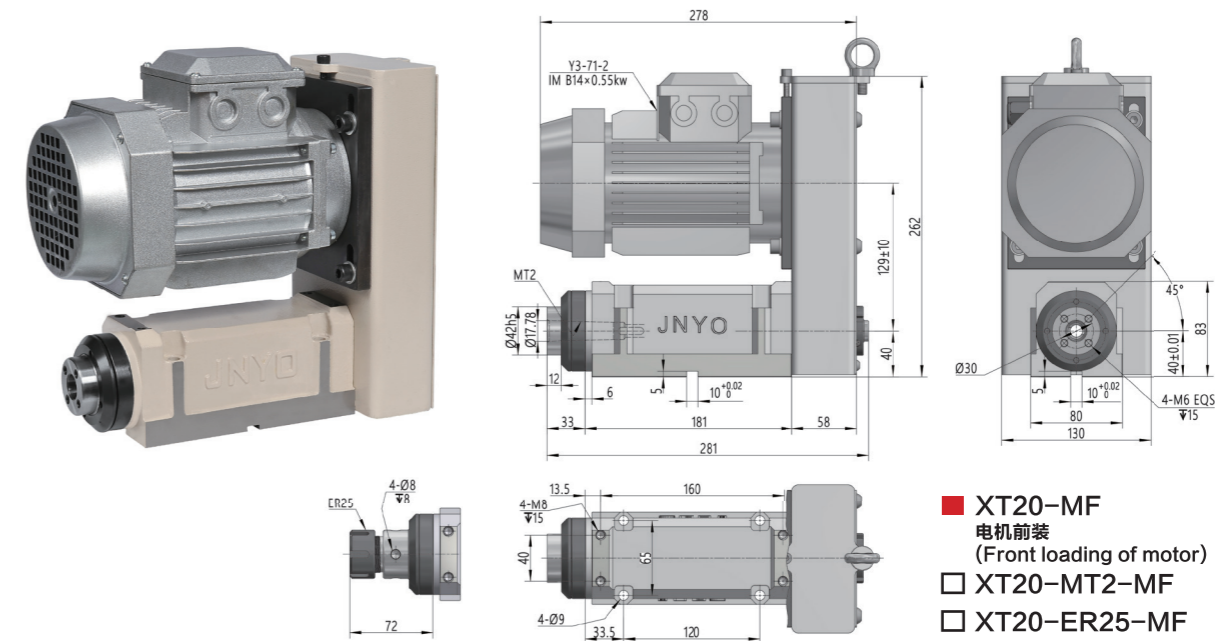
产品参数 PRODUCT PARAMETERS

规格	Model	XT20
主轴	Spindle	MT2/ER25
最高转速 (RPM)	Max. Speed(RPM)	8000
轴承	Bearing	7005AC/DB 7005AC/DB
润滑方式	Lubrication Mode	高速轴承润滑脂 (High-speed Bearing Grease)
温升	Temperature Rise	$\leq 20^{\circ}\text{C}$
真圆度	Roundness	$\leq 0.004\text{mm}$
最大动力	Max. Power	$\leq 1.5\text{HP}$

■ 出厂附精度检测表 (Table for accuracy detection is attached while delivery)

◆ 本公司不断进行研发改进更新设计、规格、结构等，恕不另行通知，本表仅供参考，详细与营销部联系 (0576-80235999)

镗铣主轴头配电机 Boring & Milling Head Unit With The Motor

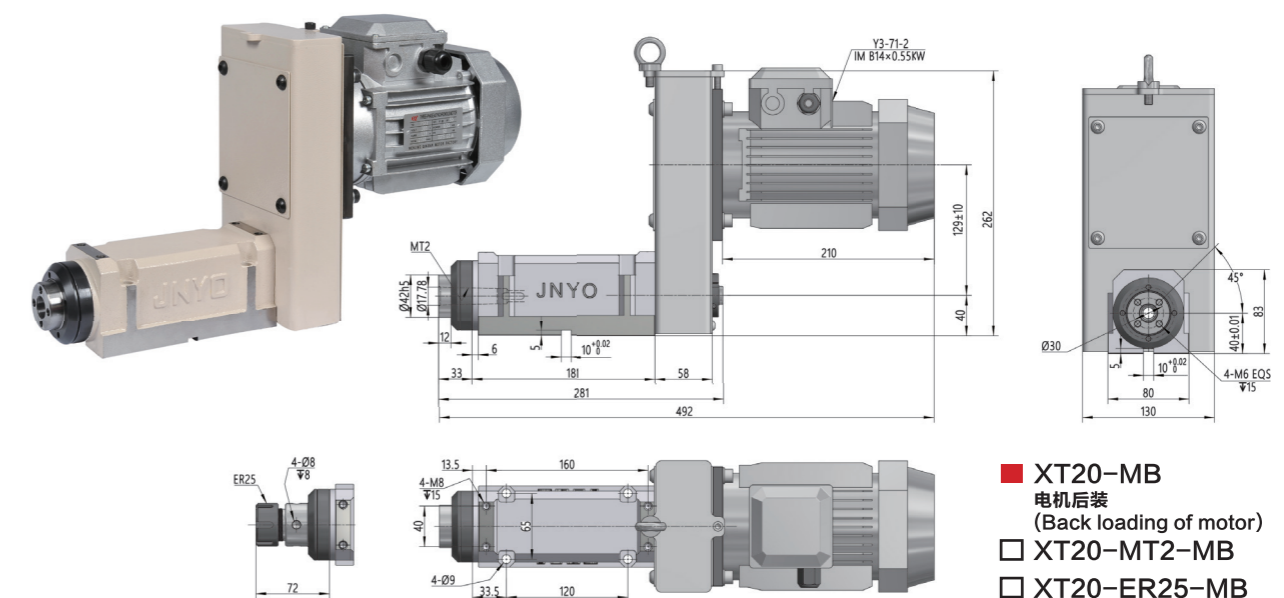


- XT20-MF
电机前装
(Front loading of motor)
- XT20-MT2-MF
- XT20-ER25-MF

产品参数 PRODUCT PARAMETERS

三相异步电机	Three-phase asynchronous motor	0.35KW...1.1KW	2P(3000RPM)/4P(1500RPM)/6P(1000RPM)	
伺服主轴电机	Servo spindle motor	0.35KW...1.1KW	额定转速 (Rated Speed) 3000RPM	最高转速 (Max. Speed) 8000RPM
变频电机	Variable frequency motor	0.35KW...1.1KW	额定频率 (Rated Frequency) 50Hz	最大频率 (Max. Frequency) 200Hz
减速电机	Gear motor	0.35KW...1.1KW	选配 (Optional)	

- ※ 电机功率及转速可根据需求，使用三角带、同步带、多楔带速比配置。
- ※ 可接受特殊规格动力头定制。
- ※ 电机箱体配置方向还能前装左侧 90° / 前装右侧 90°、后装左侧 90° / 后装右侧 90°、向下前置 / 向下后置。
- ※ The motor power and speed can be configured with speed ratio of triangular belt, synchronous belt and poly V-belt according to the requirement.
- ※ The customization of power head with special specification can be accepted.
- ※ The front loading of left side for 90° / front loading of right side for 90° , back loading of left side for 90° / back loading of right side for 90° and downward preposition/downward postposition can also be carried out in the configuration direction of motor box.



- XT20-MB
电机后装
(Back loading of motor)
- XT20-MT2-MB
- XT20-ER25-MB

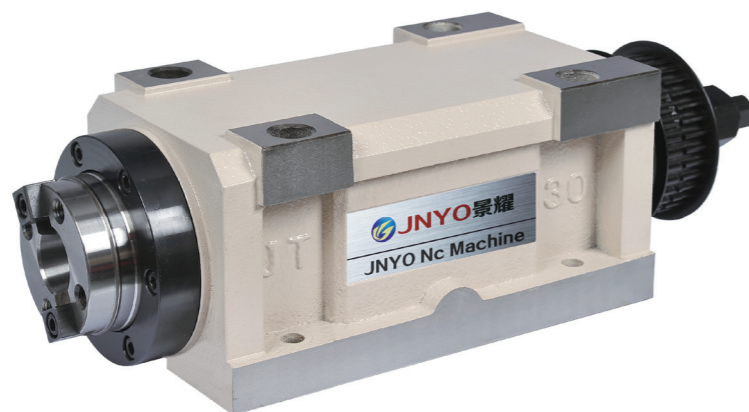
◆ 本公司不断进行研发改进更新设计、规格、结构等，恕不另行通知，本表仅供参考，详细与营销部联系 (0576-80235999)

XT30-1

镗铣主轴头 Boring & Milling Head Unit

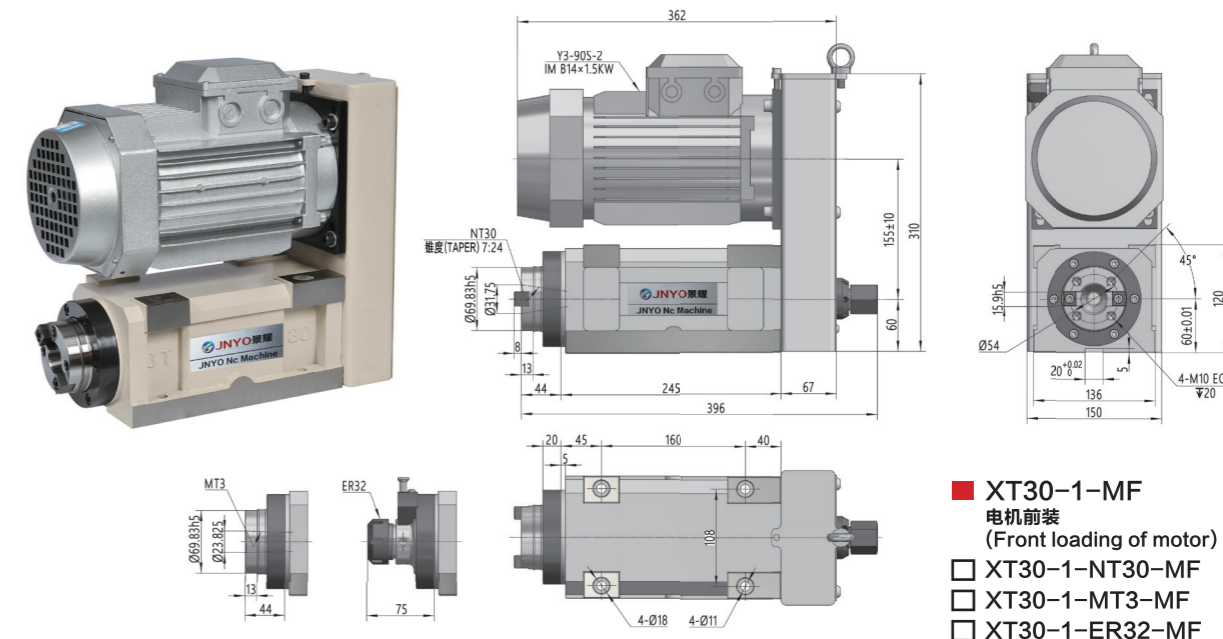
Made in China Spirit in Global

- XT30-1-NT30
- XT30-1-MT3
- XT30-1-ER32



- XT30-1 主轴头主轴形式：
Spindle type of the XT30-1 spindle head:
- NT30 为锥度 7:24 的传统型后拉杆装刀。
NT30 is the traditional type with the taper of 7:24 and cutter installed with rear axle rod.
- MT3 可直接放置莫氏 3 号锥柄。
MT3# taper-shank with flat tail can be directly placed.
- ER32 夹持直柄刀具 $\Phi 2-\Phi 20\text{mm}$ 。
ER32 clamping cutter with straight shank $\Phi 2-\Phi 20\text{mm}$.

镗铣主轴头配电机 Boring & Milling Head Unit With The Motor

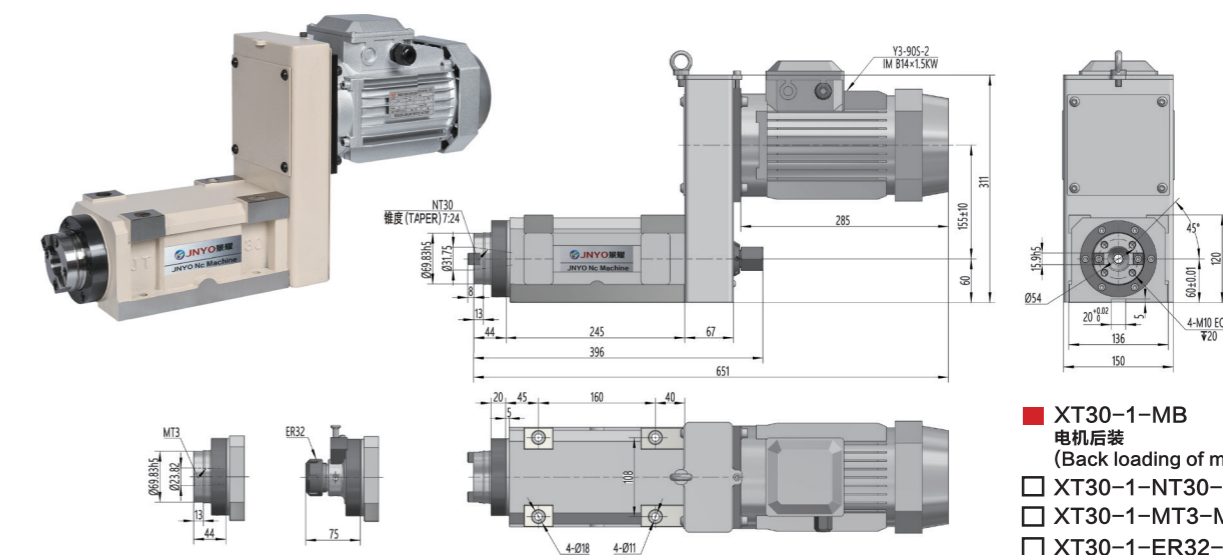


- XT30-1-MF
电机前装
(Front loading of motor)
- ☐ XT30-1-NT30-MF
- ☐ XT30-1-MT3-MF
- ☐ XT30-1-ER32-MF

产品参数 PRODUCT PARAMETERS

三相异步电机	Three-phase asynchronous motor	0.75KW...2.2KW	2P(3000RPM)/4P(1500RPM)/6P(1000RPM)	
伺服主轴电机	Servo spindle motor	0.75KW...2.2KW	额定转速 (Rated Speed) 2000RPM	最高转速 (Max. Speed) 6000RPM
变频电机	Variable frequency motor	0.75KW...2.2KW	额定频率 (Rated Frequency) 50Hz	最大频率 (Max. Frequency) 100Hz
减速电机	Gear motor	0.75KW...2.2KW	选配 (Optional)	

- ※ 电机功率及转速可根据需求，使用三角带、同步带、多楔带速比配置。
- ※ 可接受特殊规格动力头定制。
- ※ 电机箱体配置方向还能前装左侧 90° / 前装右侧 90°、后装左侧 90° / 后装右侧 90°、向下前置 / 向下后置。
- ※ The motor power and speed can be configured with speed ratio of triangular belt, synchronous belt and poly V-belt according to the requirement.
- ※ The customization of power head with special specification can be accepted.
- ※ The front loading of left side for 90° / front loading of right side for 90° , back loading of left side for 90° / back loading of right side for 90° and downward preposition/downward postposition can also be carried out in the configuration direction of motor box.



- XT30-1-MB
电机后装
(Back loading of motor)
- ☐ XT30-1-NT30-MB
- ☐ XT30-1-MT3-MB
- ☐ XT30-1-ER32-MB

产品参数 PRODUCT PARAMETERS

规格	Model	XT30-1
主轴	Spindle	NT30/MT3/ER32
最高转速 (RPM)	Max. Speed(RPM)	4500 6000 NSK 轴承 (NSK Bearings)
轴承	Bearing	7207AC/TBT 7206AC/DB
润滑方式	Lubrication Mode	高速轴承润滑脂 (High-speed Bearing Grease)
温升	Temperature Rise	$\leq 20^{\circ}\text{C}$
真圆度	Roundness	$\leq 0.004\text{mm}$
最大动力	Max. Power	$\leq 3\text{HP}$

■ 出厂附精度检测表 (Table for accuracy detection is attached while delivery)

◆ 本公司不断进行研发改进更新设计、规格、结构等，恕不另行通知，本表仅供参考，详细与营销部联系 (0576-80235999)

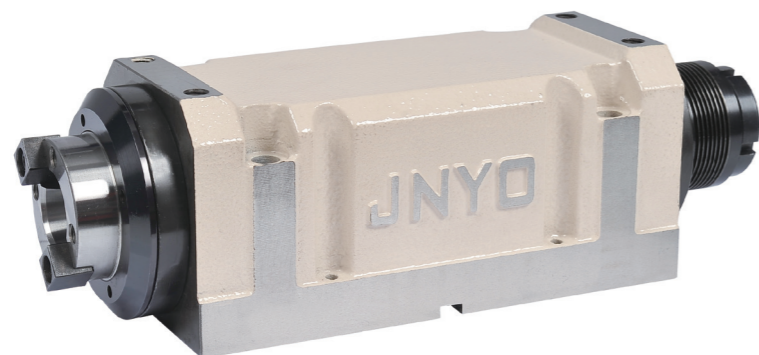
◆ 本公司不断进行研发改进更新设计、规格、结构等，恕不另行通知，本表仅供参考，详细与营销部联系 (0576-80235999)

XT30-2

镗铣主轴头 Boring & Milling Head Unit

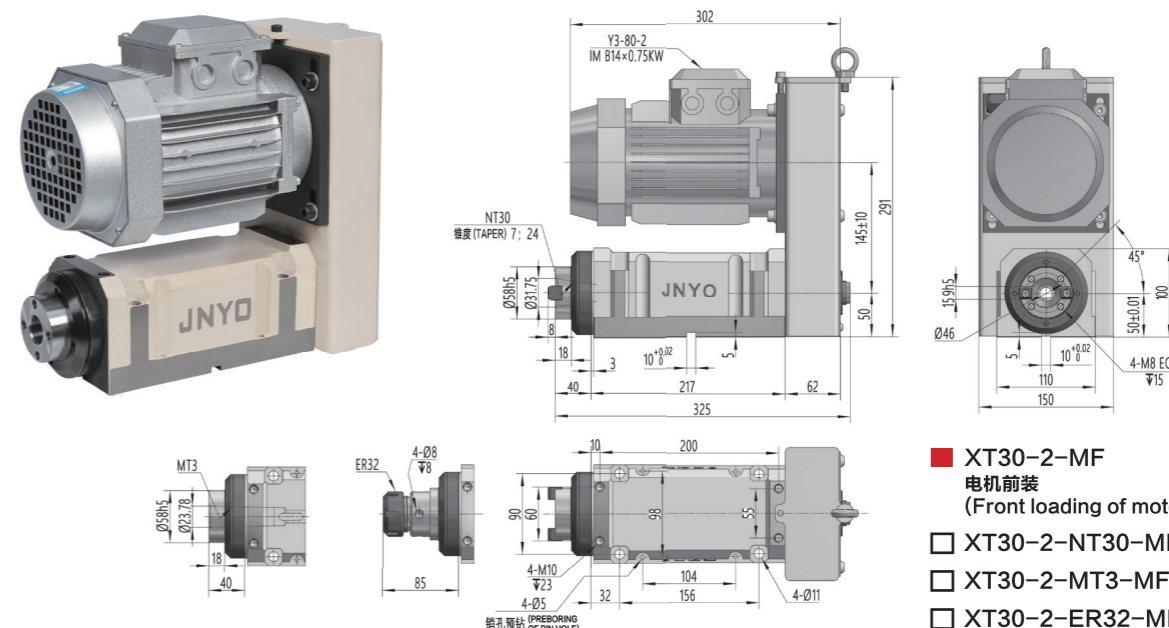
Made in China Spirit in Global

- XT30-2-NT30
- XT30-2-MT3
- XT30-2-ER32



- XT30-2 主轴头主轴形式：
Spindle type of the XT30-2 spindle head:
- NT30 为锥度 7:24 的传统型后拉杆装刀。
NT30 is the traditional type with the taper of 7:24 and cutter installed with rear axle rod.
- MT3 可直接放置莫氏 3 号带扁尾锥柄。
MT3# taper-shank with flat tail can be directly placed.
- ER32 夹持直柄刀具 $\Phi 2-\Phi 20\text{mm}$ 。
ER32 clamping cutter with straight shank $\Phi 2-\Phi 20\text{mm}$.

镗铣主轴头配电机 Boring & Milling Head Unit With The Motor

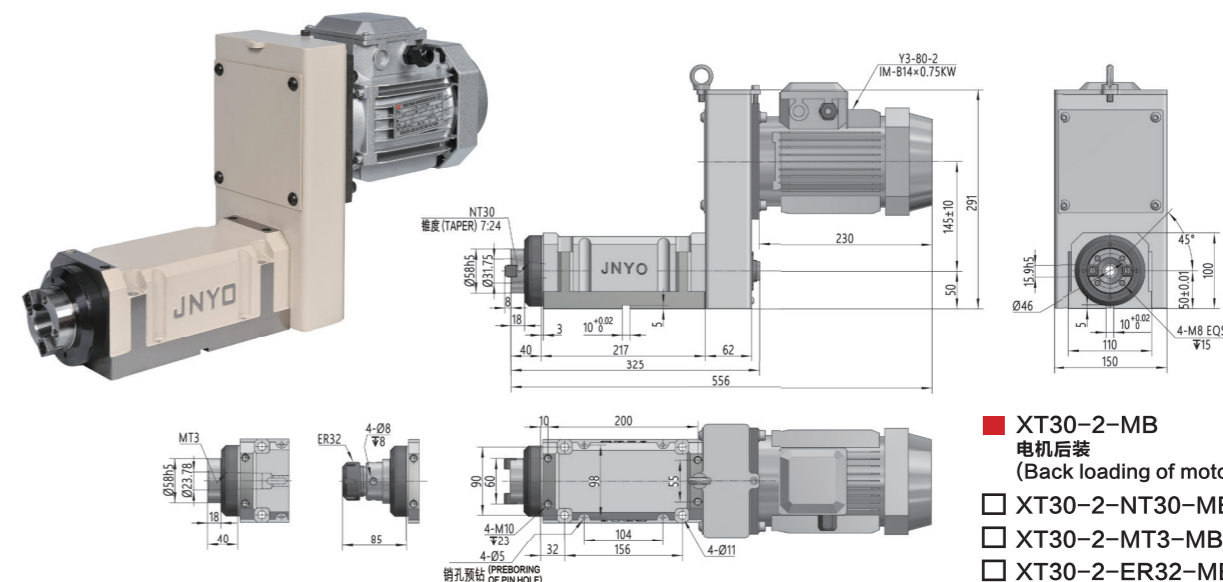


- XT30-2-MF
电机前装
(Front loading of motor)
- XT30-2-NT30-MF
- XT30-2-MT3-MF
- XT30-2-ER32-MF

产品参数 PRODUCT PARAMETERS

三相异步电机	Three-phase asynchronous motor	0.55KW...1.5KW	2P(3000RPM)/4P(1500RPM)/6P(1000RPM)	
伺服主轴电机	Servo spindle motor	0.55KW...1.5KW	额定转速 (Rated Speed) 2500RPM	最高转速 (Max. Speed) 8000RPM
变频电机	Variable frequency motor	0.55KW...1.5KW	额定频率 (Rated Frequency) 50Hz	最大频率 (Max. Frequency) 200Hz
减速电机	Gear motor	0.55KW...1.5KW	选配 (Optional)	

- ※ 电机功率及转速可根据需求，使用三角带、同步带、多楔带速比配置。
- ※ 可接受特殊规格动力头定制。
- ※ 电机箱体配置方向还能前装左侧 90° / 前装右侧 90°、后装左侧 90° / 后装右侧 90°、向下前置 / 向下后置。
- ※ The motor power and speed can be configured with speed ratio of triangular belt, synchronous belt and poly V-belt according to the requirement.
- ※ The customization of power head with special specification can be accepted.
- ※ The front loading of left side for 90° / front loading of right side for 90° , back loading of left side for 90° /back loading of right side for 90° and downward preposition/downward postposition can also be carried out in the configuration direction of motor box.



- XT30-2-MB
电机后装
(Back loading of motor)
- XT30-2-NT30-MB
- XT30-2-MT3-MB
- XT30-2-ER32-MB

产品参数 PRODUCT PARAMETERS

规格	Model	XT30-2
主轴	Spindle	NT30/MT3/ER32
最高转速 (RPM)	Max. Speed(RPM)	8000
轴承	Bearing	7007AC/DB 7007AC/DB
润滑方式	Lubrication Mode	高速轴承润滑脂 (High-speed Bearing Grease)
温升	Temperature Rise	$\leq 20^{\circ}\text{C}$
真圆度	Roundness	$\leq 0.004\text{mm}$
最大动力	Max. Power	$\leq 2\text{HP}$

■ 出厂附精度检测表 (Table for accuracy detection is attached while delivery)

◆ 本公司不断进行研发改进更新设计、规格、结构等，恕不另行通知，本表仅供参考，详细与营销部联系 (0576-80235999)

◆ 本公司不断进行研发改进更新设计、规格、结构等，恕不另行通知，本表仅供参考，详细与营销部联系 (0576-80235999)

Made in China Spirit in Global



Drilling & Tapping Power Head With Motor

■ ZG30-2-B18



ZG30-2 动力头采用动密封非接触式多重迷宫防水结构设计, 防止生产加工中切削液或灰尘、切屑等异物的外部侵入, 保证轴承不受污染, 确保轴承的寿命及精度。可选配多种主轴形式, 配合伺服进给电机控制滑筒伸缩, 代替额外配置滑台的优势; 应用到钻、攻、铰等多个加工场合。B18 为莫氏 2 号短莫氏圆锥; 可配置与锥度匹配的钻夹头或 B18 转 ER25 刀柄, 夹持直柄刀具 $\Phi 1-\Phi 16\text{mm}$ 。独特的功能优势, 让切削变的更容易。

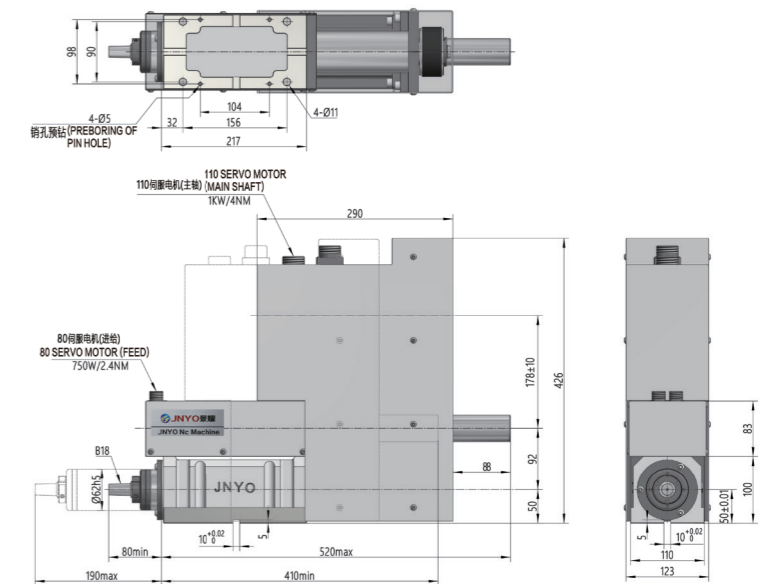
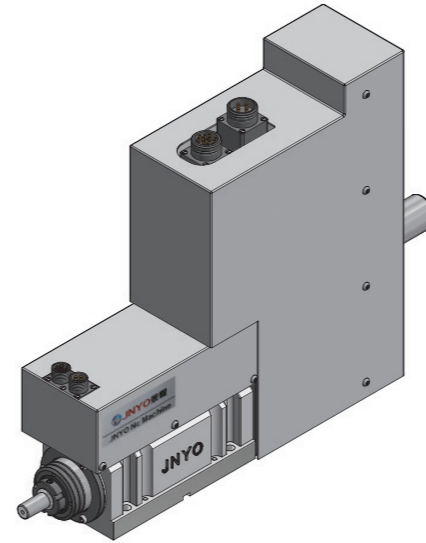
ZG30-2 power head is designed into dynamic-seal non-contact multiple labyrinth waterproof structure, so as to prevent the external invasion of cutting fluid or dust, cuttings and other foreign matters during the production and processing, guarantee that the bearing is not polluted, and ensure the lifespan or precision of the bearing. Many spindle forms can be matched, the sliding sleeve can be controlled for stretching by matching the servo feed motor, and it has advantage of replacing the sliding table configured additionally; and it can be applied to many processing occasions, such as drilling, tapping and hinging. B18 is the short morse taper of MT2#, and can be equipped with drill chuck matched with the taper or B18 turning ER25 tool handle, and $\Phi 1-\Phi 16$ mm cutter of straight shank is clamped. The cutting is easier by virtue of unique functional advantage.

产品参数 PRODUCT PARAMETERS

规 格	Model	ZG30-2
主 轴	Spindle	B18
最高转速	Max. Speed(RPM)	8000
轴 承	Bearing	7005AC/TBT 6004ZX2
润滑方式	Lubrication Mode	高速轴承润滑脂（High-speed Bearing Grease）
温 升	Rising Temperature	≤ 20℃
真圆度	Roundness	≤ 0.004mm
最大动力	Max. Power	≤ 1.5HP
钻孔 / 攻丝能力	Drilling /Tapping Capacity	铝：M14 Φ14 钢：M12 Φ10
最大行程	Max.Stroke	100mm
滚珠丝杆规格	The ball screw specifications	Φ16 × 4

■ 出厂附精度检测表 (Table for accuracy detection is attached while delivery)

◆本公司不断进行研发改进更新设计、规格、结构等，恕不另行通知，本表仅供参考，详细与营销部联系（0576-80235999）



产品参数 PRODUCT PARAMETERS

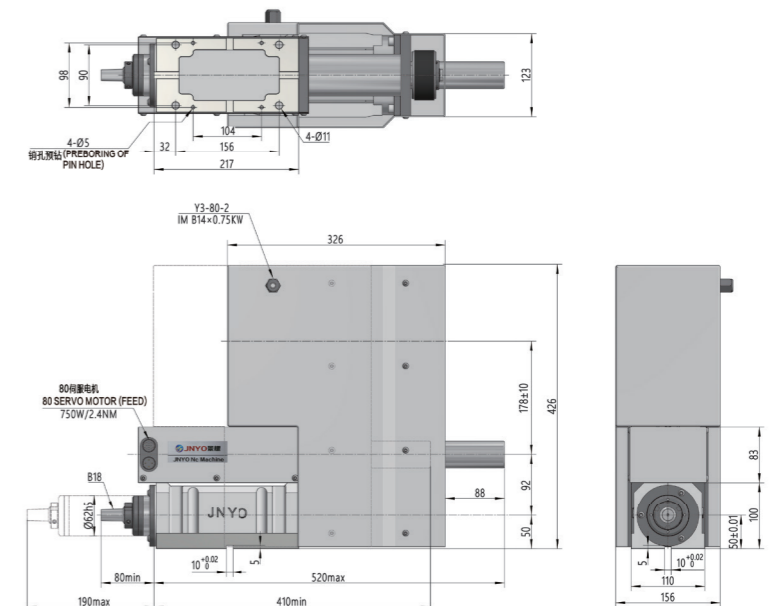
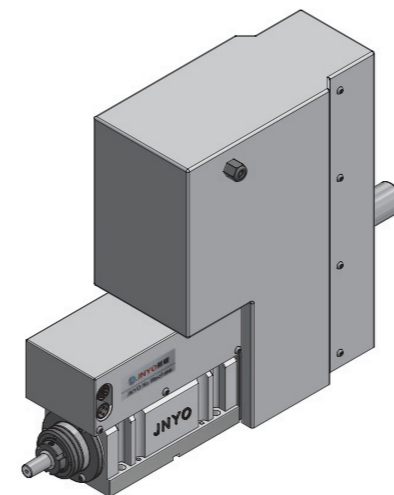
三相异步电机	Three-phase asynchronous motor	0.55KW~1.1KW	2P(3000RPM)/4P(1500RPM)/6P(1000RPM)	
伺服主轴电机	Servo spindle motor	110SY 0.55KW~1.8KW	额定转速 (Rated Speed) 2500RPM	最高转速 (Max. Speed) 3000RPM
变频电机	Variable frequency motor	0.55KW~1.1KW	额定频率 (Rated Frequency) 50Hz	最大频率 (Max. Frequency) 200Hz
进给伺服电机	Feed servo motor	80SY (0.55KW~1.1KW)	额定转速 (Rated Speed) 3000RPM	最高转速 (Max. Speed) 3300RPM

※ 电机功率及转速可根据需求，使用三角带、同步带、多楔带速比配置。

※ 可接受特殊规格动力头定制。

※ The motor power and speed can be configured with speed ratio of triangular belt, synchronous belt and poly V-belt according to the requirement.

※ The customization of power head with special specification can be accepted.



◆本公司不断进行研发改进更新设计、规格、结构等，恕不另行通知，本表仅供参考，详细与营销部联系（0576-80235999）

XT40-1

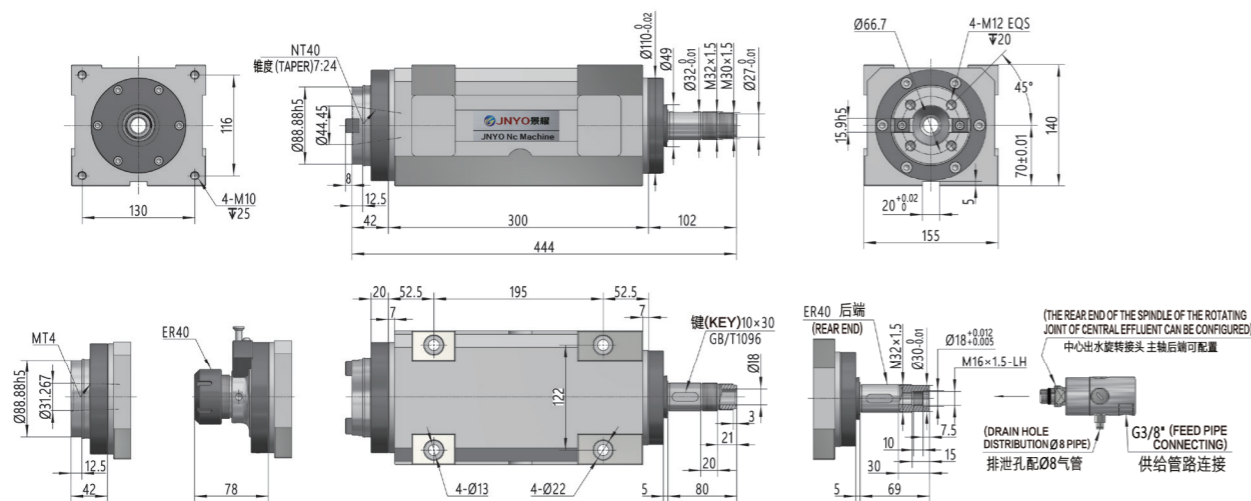
镗铣主轴头 Boring & Milling Head Unit

Made in China Spirit in Global

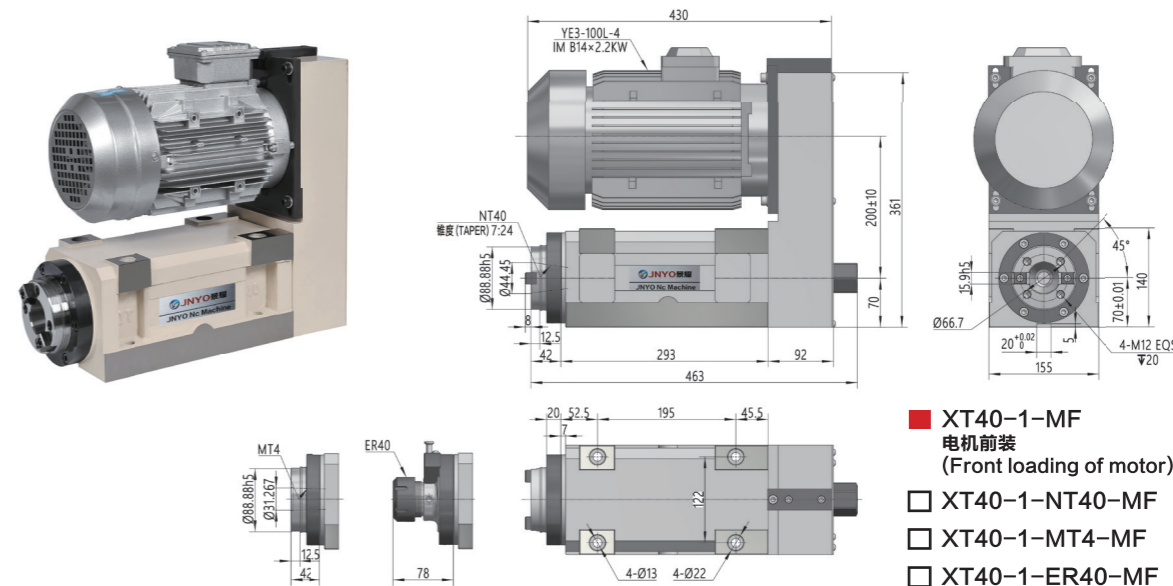
- XT40-1-NT40
- XT40-1-MT4
- XT40-1-ER40



- XT40-1 主轴头主轴形式：
Spindle type of the XT40-1 spindle head :
- NT40 为锥度 7:24 的传统型后拉杆装刀。
NT40 is the traditional type with the taper of 7:24 and cutter installed with rear axle rod.
- MT4 可直接放置莫氏 4 号锥柄。
MT4# taper-shank with flat tail can be directly placed.
- ER40 夹持直柄刀具 $\Phi 3-\Phi 26\text{mm}$ 。
ER40 clamping cutter with straight shank $\Phi 3-\Phi 26\text{mm}$.



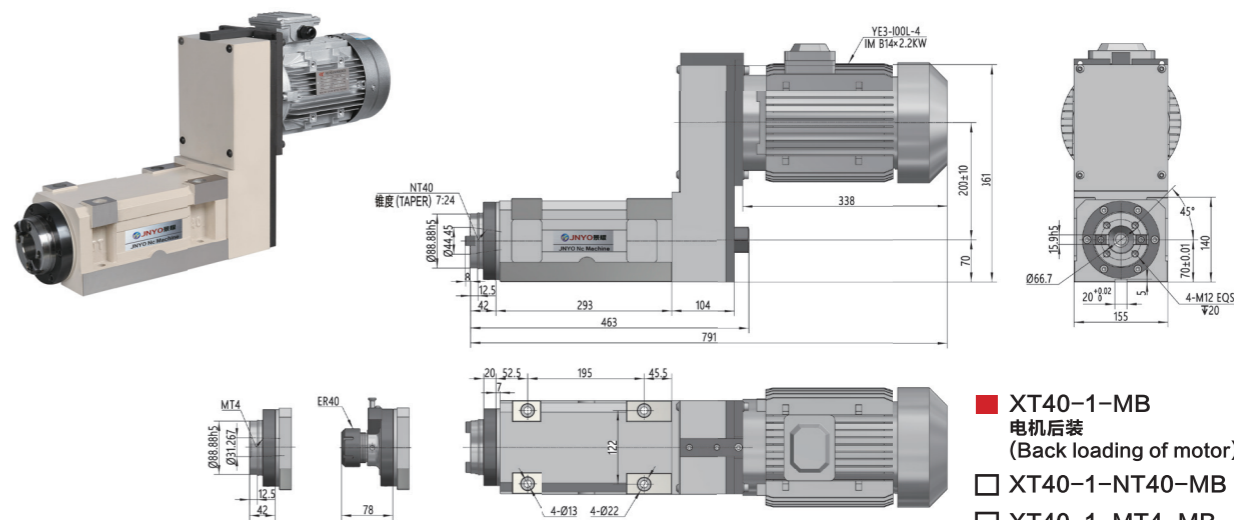
镗铣主轴头配电机 Boring & Milling Head Unit With The Motor



产品参数 PRODUCT PARAMETERS

三相异步电机	Three-phase asynchronous motor	1.5KW...4KW	2P(3000RPM)/4P(1500RPM)/6P(1000RPM)	
伺服主轴电机	Servo spindle motor	1.5KW...7.5KW	额定转速 (Rated Speed) 2000RPM	最高转速 (Max. Speed) 6000RPM
变频电机	Variable frequency motor	1.5KW...4KW	额定频率 (Rated Frequency) 50Hz	最大频率 (Max. Frequency) 100Hz
减速电机	Gear motor	0.4KW...1.5KW	选配 (Optional)	

- ※ 电机功率及转速可根据需求，使用三角带、同步带、多楔带速比配置。
- ※ 可接受特殊规格动力头定制。
- ※ 电机箱体配置方向还能前装左侧 90° / 前装右侧 90°、后装左侧 90° / 后装右侧 90°、向下前置 / 向下后置。
- ※ The motor power and speed can be configured with speed ratio of triangular belt, synchronous belt and poly V-belt according to the requirement.
- ※ The customization of power head with special specification can be accepted.
- ※ The front loading of left side for 90° / front loading of right side for 90° , back loading of left side for 90° / back loading of right side for 90° and downward preposition/downward postposition can also be carried out in the configuration direction of motor box.



- XT40-1-MB
电机后装
(Back loading of motor)
- XT40-1-NT40-MB
- XT40-1-MT4-MB
- XT40-1-ER40-MB

产品参数 PRODUCT PARAMETERS

规格	Model	XT40-1	
主轴	Spindle	NT40/MT4/ER40	
最高转速 (RPM)	Max. Speed(RPM)	4500	6000 NSK 轴承 (NSK Bearings)
轴承	Bearing	7209AC/TBT 7208AC/DB	
润滑方式	Lubrication Mode	高速轴承润滑脂 (High-speed Bearing Grease)	
温升	Temperature Rise	$\leq 20^{\circ}\text{C}$	
真圆度	Roundness	$\leq 0.004\text{mm}$	
最大动力	Max. Power	$\leq 7.5\text{HP}$	

■ 出厂附精度检测表 (Table for accuracy detection is attached while delivery)

◆ 本公司不断进行研发改进更新设计、规格、结构等，恕不另行通知，本表仅供参考，详细与营销部联系 (0576-80235999)

◆ 本公司不断进行研发改进更新设计、规格、结构等，恕不另行通知，本表仅供参考，详细与营销部联系 (0576-80235999)

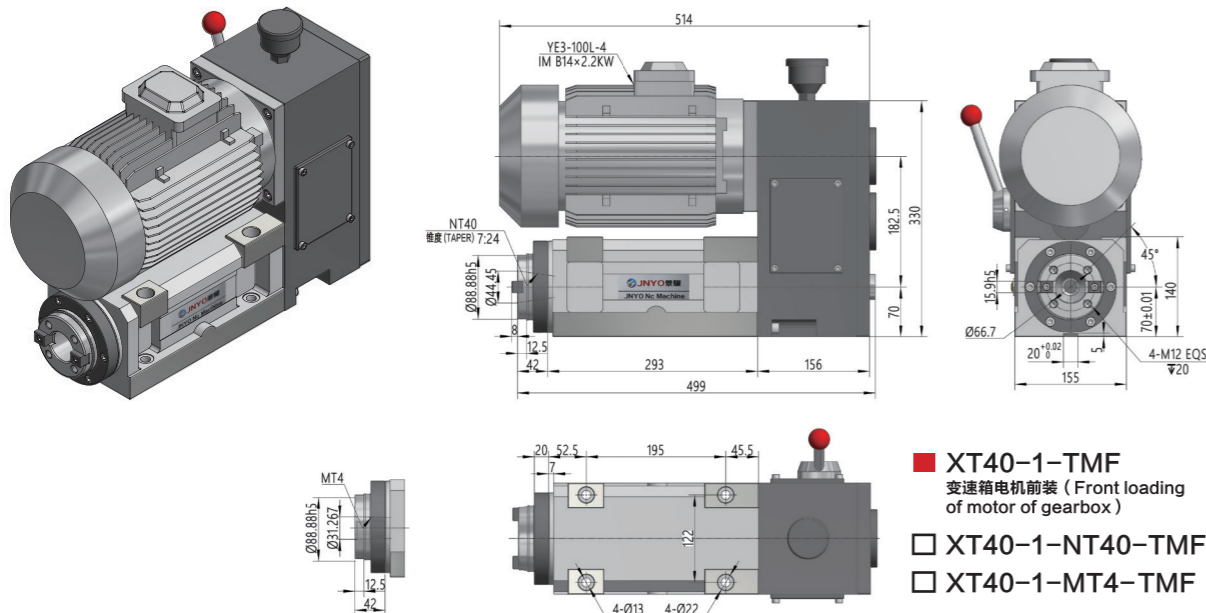
XT40-1

镗铣主轴头配变速箱电机 Boring & Milling Spindle Head's Gearbox Motor

Made in China Spirit in Global

XT40-2

镗铣主轴头 Boring & Milling Head Unit

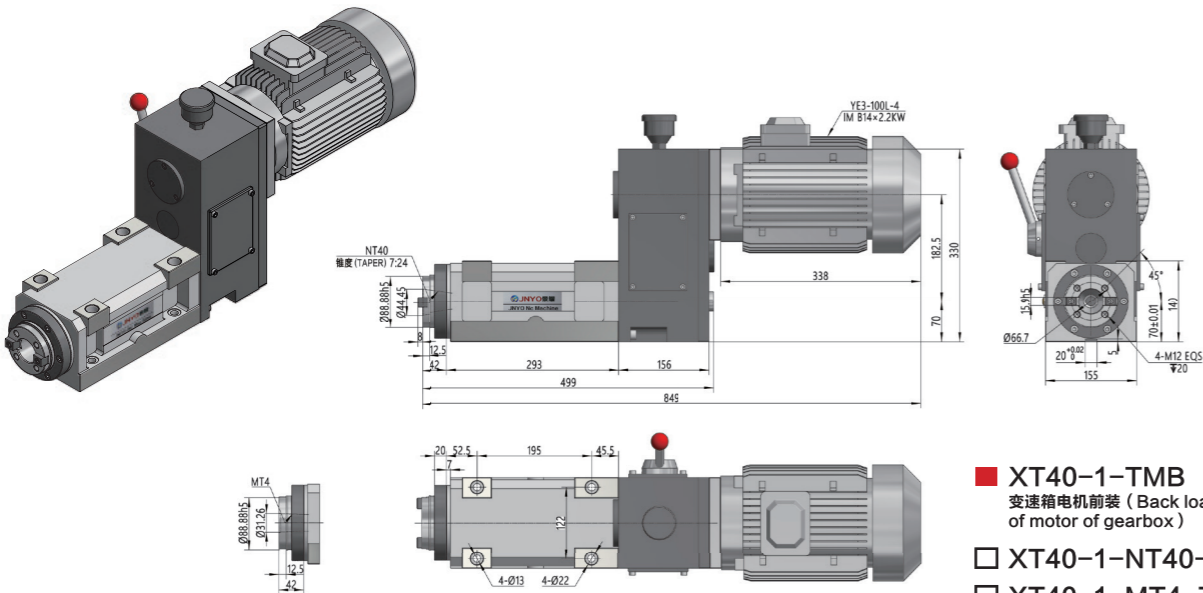


- XT40-1-TMF 变速箱电机前装 (Front loading of motor of gearbox)
- XT40-1-NT40-TMF
- XT40-1-MT4-TMF

产品参数 PRODUCT PARAMETERS

三相异步电机	Three-phase asynchronous motor	1.5KW~4KW	2P(3000RPM)/4P(1500RPM)/6P(1000RPM)	
变频电机	Variable frequency motor	1.5KW~4KW	Rated Frequency 50Hz	Max. Frequency 100Hz

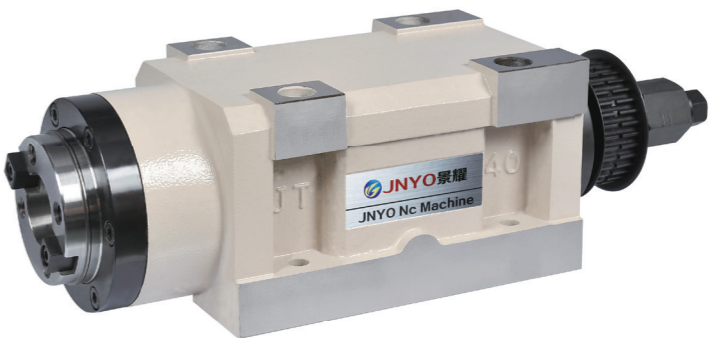
※ 变速箱由高速 (1:1)、空挡、低速 (1:4) 组成; 可换挡的高低速切换, 让粗加工和精加工同时成为可能
※ 电机功率及转速可根据需求配置
※ 可接受特殊规格动力头定制
※ 电机箱体配置方向还能前装左侧 90° / 前装右侧 90°、后装左侧 90° / 后装右侧 90°、向下前置 / 向下后置
※ The gearbox is composed of high speed (1:1), neutral gear and low speed (1:4); and the rough machining and finish machining become possible at the same time by virtue of the high and low speed switching which can shift the gear.
※ The motor power and speed can be configured according to the requirement.
※ The front loading of left side for 90° / front loading of right side for 90°, back loading of left side for 90° / back loading of right side for 90° and downward preposition/downward postposition can also be carried out in the configuration direction of motor box.



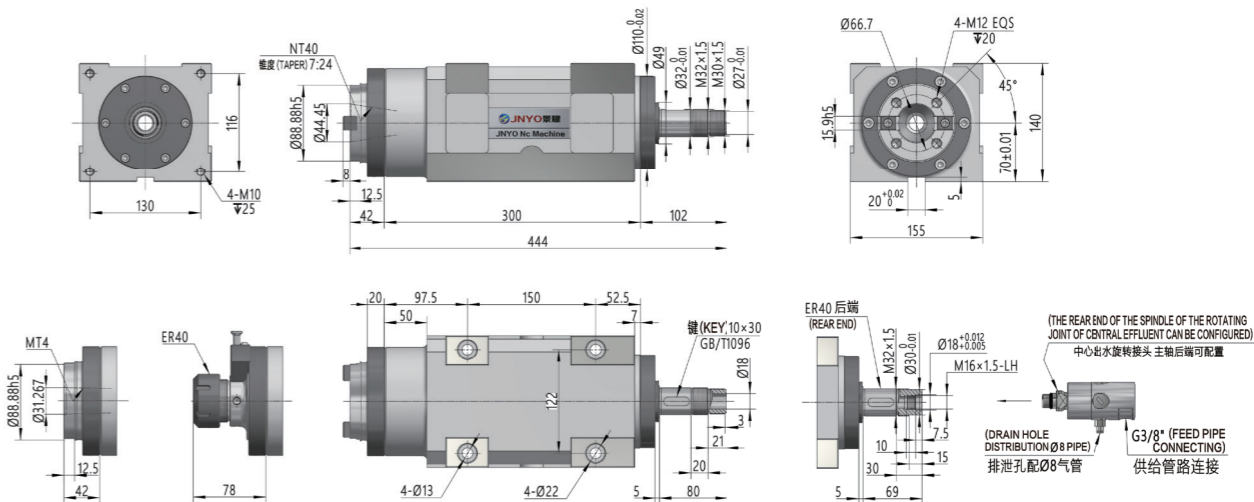
- XT40-1-TMB 变速箱电机前装 (Back loading of motor of gearbox)
- XT40-1-NT40-TMB
- XT40-1-MT4-TMB

◆ 本公司不断进行研发改进更新设计、规格、结构等, 恕不另行通知, 本表仅供参考, 详细与营销部联系 (0576-80235999)

- XT40-2-NT40
- XT40-2-MT4
- XT40-2-ER40



- XT40-2 主轴头主轴形式: Spindle type of the XT40-2 spindle head:
- NT40 为锥度 7:24 的传统型后拉杆装刀。NT40 is the traditional type with the taper of 7:24 and cutter installed with rear axle rod.
- MT4 可直接放置莫氏 4 号锥柄。MT4# taper-shank with flat tail can be directly placed.
- ER40 夹持直柄刀具 $\Phi 3-\Phi 26\text{mm}$ 。ER40 clamping cutter with straight shank $\Phi 3-\Phi 26\text{mm}$.



产品参数 PRODUCT PARAMETERS

规格	Model	XT40-2	
主轴	Spindle	NT40/MT4/ER40	
最高转速 (RPM)	Max. Speed(RPM)	4500	6000 NSK 轴承 (NSK Bearings)
轴承	Bearing	7209AC/TBT 7208AC/DB	
润滑方式	Lubrication Mode	高速轴承润滑脂 (High-speed Bearing Grease)	
温升	Temperature Rise	$\leq 20^{\circ}\text{C}$	
真圆度	Roundness	$\leq 0.004\text{mm}$	
最大动力	Max. Power	$\leq 7.5\text{HP}$	

■ 出厂附精度检测表 (Table for accuracy detection is attached while delivery)

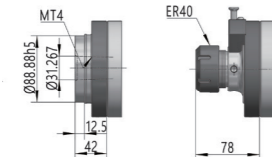
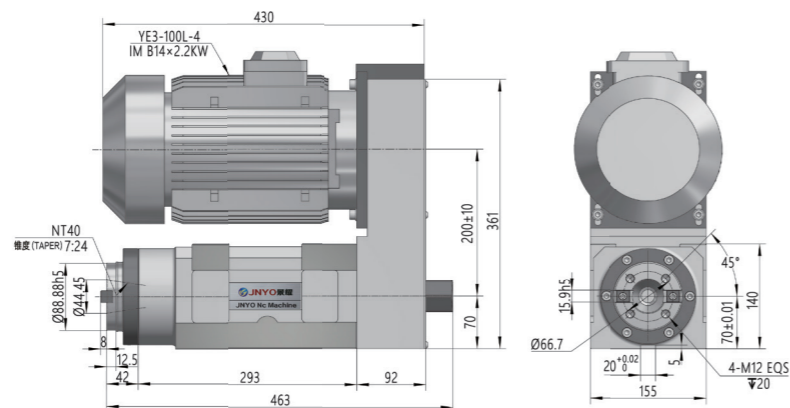
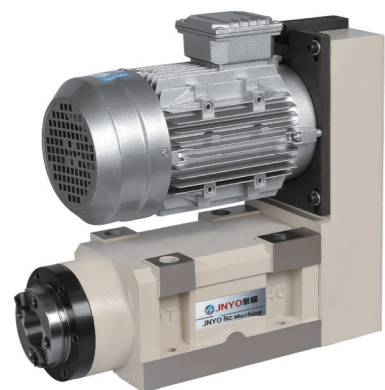
◆ 本公司不断进行研发改进更新设计、规格、结构等, 恕不另行通知, 本表仅供参考, 详细与营销部联系 (0576-80235999)

XT40-2

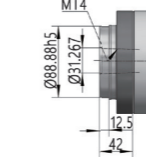
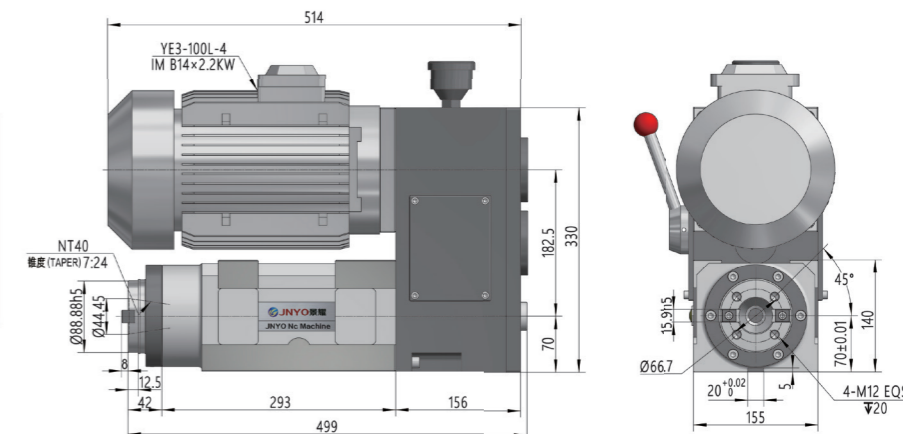
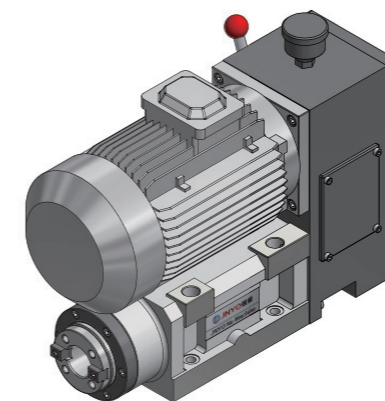
镗铣主轴头配电机 Boring & Milling Head Unit With The Motor

Made in China Spirit in Global

镗铣主轴头变速箱电机 Boring & Milling Spindle Head's Gearbox Motor



- XT40-2-MF
电机前装
(Front loading of motor)
- XT40-2-NT40-MF
- XT40-2-MT4-MF
- XT40-2-ER40-MF

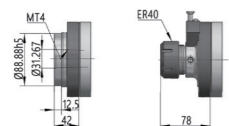
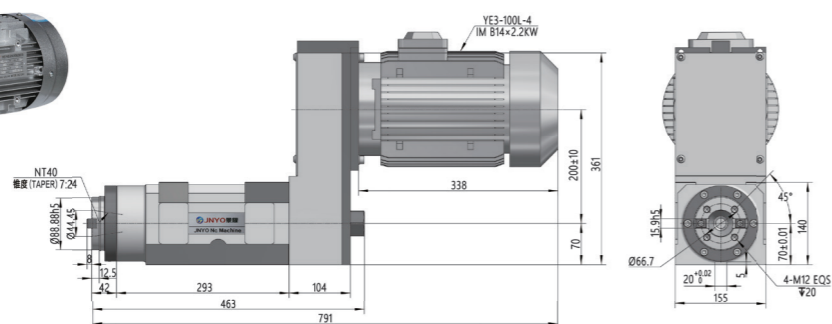
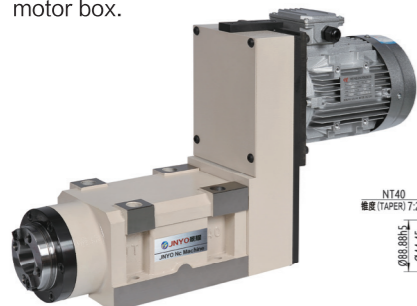


- XT40-2-TMF
变速箱电机前装 (Front loading
of motor of gearbox)
- XT40-2-NT40-TMF
- XT40-2-MT4-TMF

产品参数 PRODUCT PARAMETERS

三相异步电机	Three-phase asynchronous motor	1.5KW...4KW	2P(3000RPM)/4P(1500RPM)/6P(1000RPM)	
伺服主轴电机	Servo spindle motor	1.5KW...5.5KW	额定转速 (Rated Speed) 2000RPM	最高转速 (Max. Speed) 6000RPM
变频电机	Variable frequency motor	1.5KW...4KW	额定频率 (Rated Frequency) 50Hz	最大频率 (Max. Frequency) 100Hz
减速电机	Gear motor	1.5KW...4KW	选配 (Optional)	

- ※ 电机功率及转速可根据需求，使用三角带、同步带、多楔带速比配置
- ※ 可接受特殊规格动力头定制
- ※ 电机箱体配置方向还能前装左侧 90° / 前装右侧 90°、后装左侧 90° / 后装右侧 90°、向下前置 / 向下后置。
- ※ The motor power and speed can be configured with speed ratio of triangular belt, synchronous belt and poly V-belt according to the requirement.
- ※ The customization of power head with special specification can be accepted.
- ※ The front loading of left side for 90° / front loading of right side for 90° , back loading of left side for 90° / back loading of right side for 90° and downward preposition/downward postposition can also be carried out in the configuration direction of motor box.

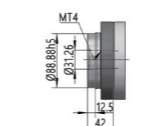
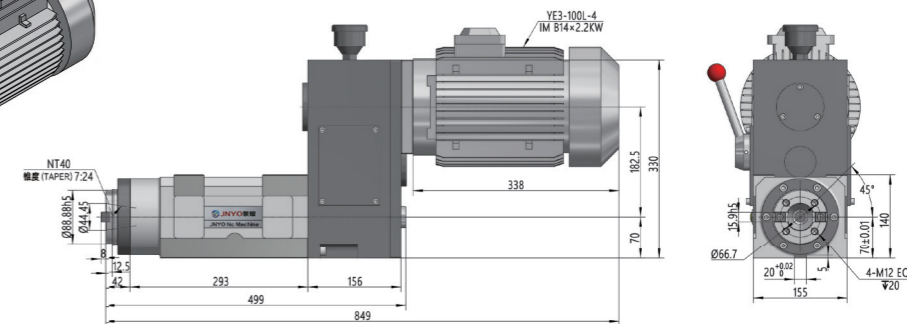
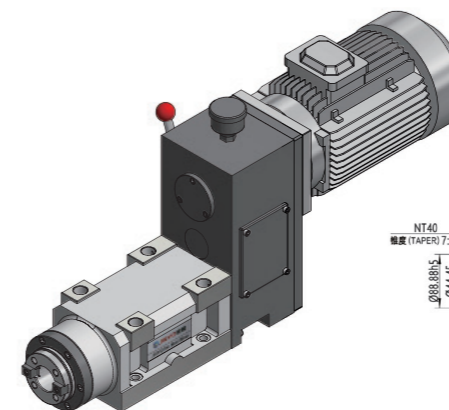


- XT40-2-MB
电机后装
(Back loading of motor)
- XT40-2-NT40-MB
- XT40-2-MT4-MB
- XT40-2-ER40-MB

产品参数 PRODUCT PARAMETERS

三相异步电机	Three-phase asynchronous motor	1.5KW...4KW	2P(3000RPM)/4P(1500RPM)/6P(1000RPM)	
变频电机	Variable frequency motor	1.5KW...4KW	额定频率 (Rated Frequency) 50Hz	最大频率 (Max. Frequency) 100Hz

- ※ 变速箱由高速 (1:1)、空挡、低速 (1:4) 组成; 可换挡的高低速切换, 让粗加工和精加工同时成为可能
- ※ 电机功率及转速可根据需求配置
- ※ 可接受特殊规格动力头定制
- ※ 电机箱体配置方向还能前装左侧 90° / 前装右侧 90°、后装左侧 90° / 后装右侧 90°、向下前置 / 向下后置
- ※ The gearbox is composed of high speed (1:1), neutral gear and low speed (1:4); and the rough machining and finish machining become possible at the same time by virtue of the high and low speed switching which can shift the gear.
- ※ The motor power and speed can be configured according to the requirement.
- ※ The front loading of left side for 90° / front loading of right side for 90° , back loading of left side for 90° / back loading of right side for 90° and downward preposition/downward postposition can also be carried out in the configuration direction of motor box.



- XT40-2-TMB
变速箱电机后装 (Back loading
of motor of gearbox)
- XT40-2-NT40-TMB
- XT40-2-MT4-TMB

◆ 本公司不断进行研发改进更新设计、规格、结构等，恕不另行通知，本表仅供参考，详细与营销部联系 (0576-80235999)

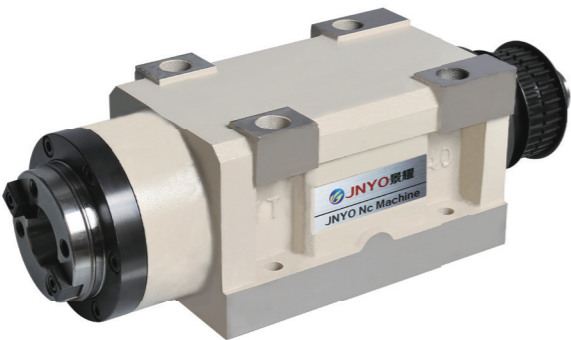
◆ 本公司不断进行研发改进更新设计、规格、结构等，恕不另行通知，本表仅供参考，详细与营销部联系 (0576-80235999)

XT40-2

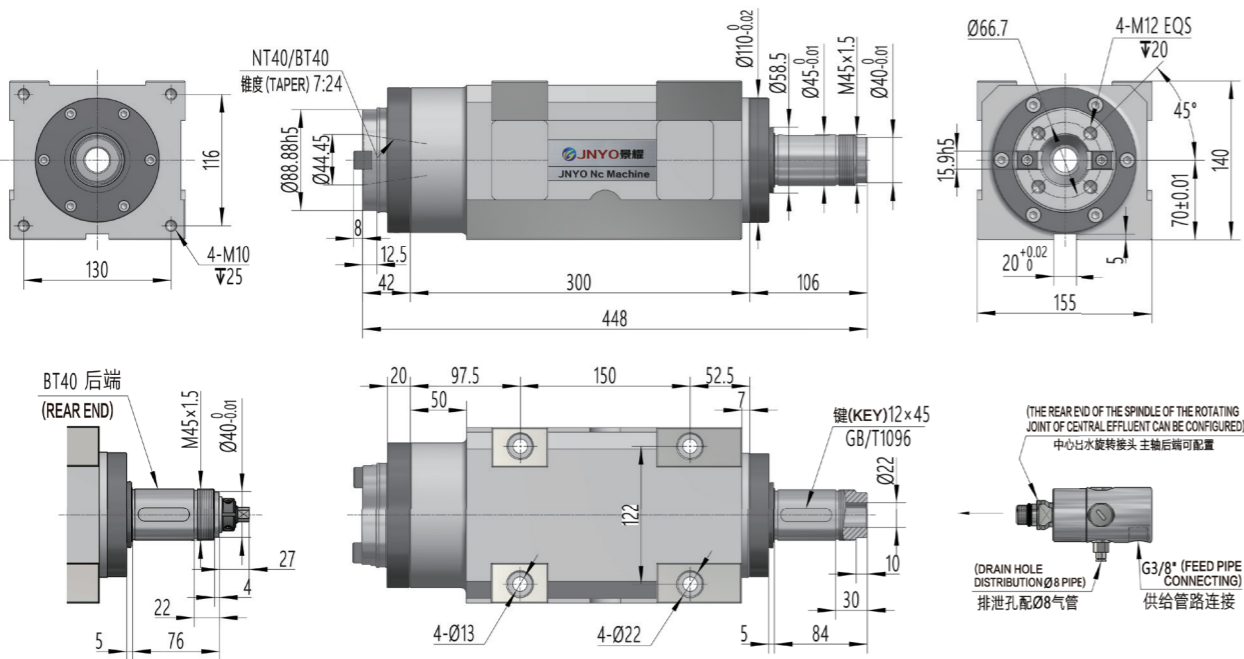
镗铣主轴头加强型 Strengthened Boring & Milling Spindle Head

Made in China Spirit in Global

- XT40-2-NT40-E
- XT40-2-BT40



- XT40-2 主轴头加强型主轴形式：
XT40-2 is enhanced boring and milling spindle head:
- NT40 为锥度 7:24 的传统型后拉杆装刀。
NT40 is the traditional type with the taper of 7:24 and cutter installed with rear axle rod.
- BT40 为锥度 7:24 的自动换刀装置。
BT40 is enhanced spindle form of spindle head is automatic tool changer with the taper of 7:24.



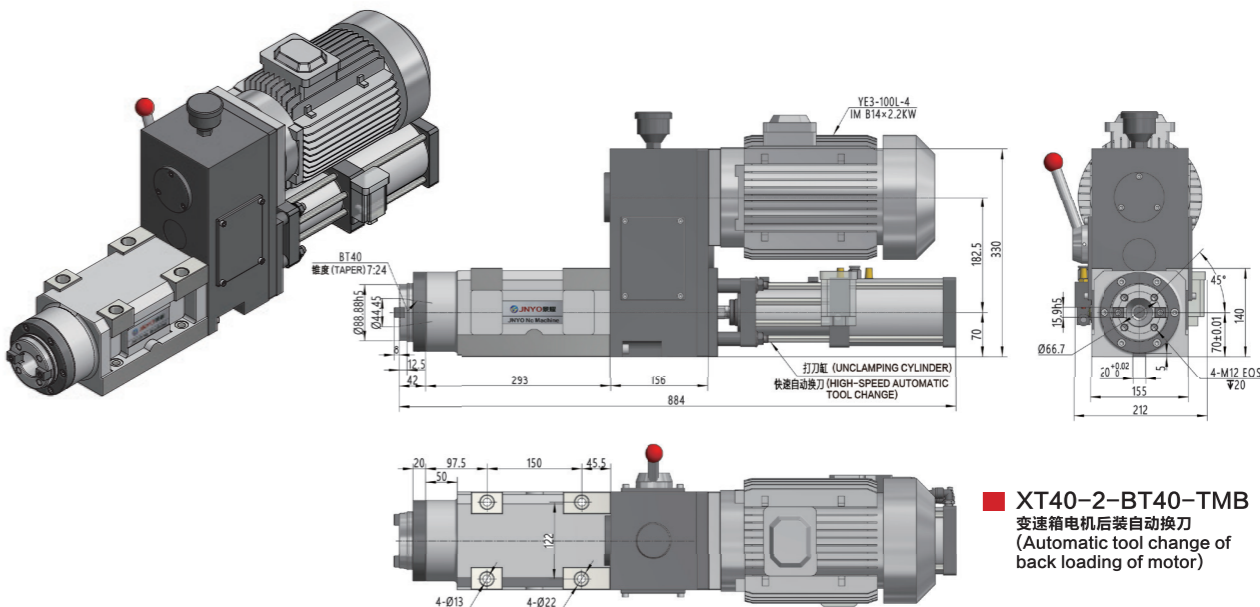
产品参数 PRODUCT PARAMETERS

规 格	Model	XT40-2		
主 轴	Spindle	NT40-E/BT40		
最高转速（RPM）	Max. Speed(RPM)	2500	4500	6000 NSK 轴承 (NSK Bearings)
轴 承	Bearing	NN3011/234411BM1 7010AC/DB	7011AC/TBT 7010AC/DB	
润滑方式	Lubrication Mode	高速轴承润滑脂（High-speed Bearing Grease）		
温 升	Temperature Rise	≤ 20℃		
真圆度	Roundness	≤ 0.004mm		
最大动力	Max. Power	≤ 10HP		

■ 出厂附精度检测表 (Table for accuracy detection is attached while delivery)

◆ 本公司不断进行研发改进更新设计、规格、结构等，恕不另行通知，本表仅供参考，详细与营销部联系 (0576-80235999)

镗铣主轴头配变速箱电机 + 自动换刀 Boring & Milling Spindle Head's Gearbox Motor+ATC



主轴头选用增压式打刀缸使用，结构紧凑，高速自动换刀的优势。主要应用到全自动化设备，可配合各种刀库实现储备一定数量的刀具并完成刀具自动交换功能的自动换刀装置。进一步提高数控机床的加工效率，实现一次装夹即可完成多道工序；组配成为数控铣床或加工中心主轴系统部件。变速箱由高速（1：1）、空挡、低速（4：1）组成；可换挡的高低速切换，让粗加工和精加工同时成为可能。

The booster-type unclamping cylinder is adopted for the spindle head, so that it has the advantages of compact structure and high-speed automatic tool change. It is mainly applied to the full-automatic equipment, and can realize to store a certain quantity of cutter and automatic tool changer completing the automatic exchange function of cutter by matching the various tool magazines. The processing efficiency of the numerical control machine tool is further improved, and one clamping is realized, namely, many processes can be completed; and it is assembled into the CNC milling machine or component of the spindle system in the machining center. The gearbox is composed of the high speed (1:1), neutral gear and low speed (4:1); and the rough machining and finish machining become possible at the same time by virtue of the high and low speed switching which can shift the gear.

- 缩短非切削时间，提高生产效率，可使非切削时间减少到 20%~30%；减少人工换刀频率的劳动重复性。
The non-cutting time is shortened, the production efficiency is improved, and the non-cutting time can be reduced to 20%-30%; and the labor repeatability of the manual tool change frequency is reduced.
- 工序集中，扩大数控机床工艺范围，减少占地面积。
The process is concentrated, so as to expand the process range of the CNC numerical control machine tool, reduce the floor space.
- 提高加工精度，刀具重复定位精度高，安全可靠的特性。
Improve the machining precision; and moreover, it has characteristics of high repeated positioning accuracy of the cutter and safety and reliability.

产品参数 PRODUCT PARAMETERS

三相异步电机	Three-phase asynchronous motor	1.5KW~4KW	2P(3000RPM)/4P(1500RPM)/6P(1000RPM)	
变频电机	Variable frequency motor	1.5KW~4KW	额定频率 (Rated Frequency) 50Hz	最大频率 (Max. Frequency) 100Hz

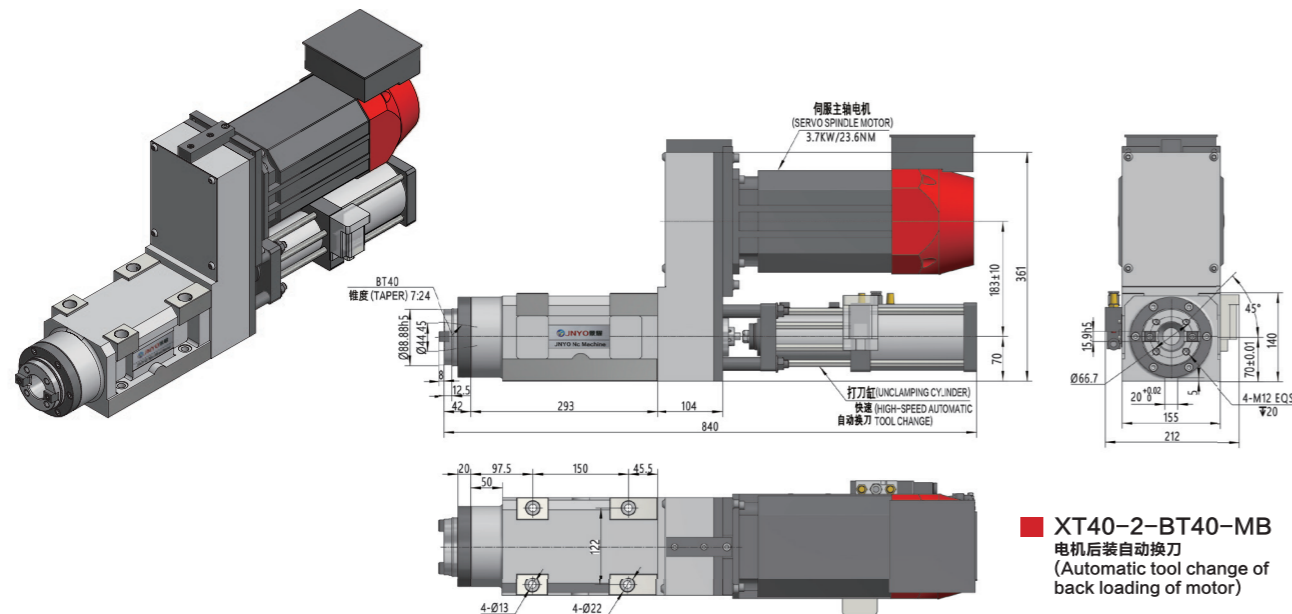
- ※ 电机功率及转速可根据需求
- ※ 可接受特殊规格动力头定制
- ※ 电机箱体配置方向还能前装左侧 90° / 前装右侧 90°、后装左侧 90° / 后装右侧 90°、向上前置 / 向下后置
- ※ The motor power and speed can be configured according to the requirement.
- ※ The customization of power head with special specification can be accepted.
- ※ The front loading of left side for 90° / front loading of right side for 90° , back loading of left side for 90° / back loading of right side for 90° and downward preposition/downward postposition can also be carried out in the configuration direction of motor box.

◆ 本公司不断进行研发改进更新设计、规格、结构等，恕不另行通知，本表仅供参考，详细与营销部联系 (0576-80235999)

XT40-2

镗铣主轴头配电机 + 自动换刀 Boring & Milling Head Unit With The Motor+ATC

Made in China Spirit in Global



XT40-2-BT40-MB
电机后装自动换刀
(Automatic tool change of
back loading of motor)

主轴头选用增压式打刀缸使用，结构紧凑，高速自动换刀的优势。主要应用到全自动化设备，可配合各种刀库实现储备一定数量的刀具并完成刀具自动交换功能的自动换刀装置。进一步提高数控机床的加工效率，实现一次装夹即可完成多道工序；组配成为数控铣床或加工中心主轴系统部件。

The booster-type unclamping cylinder is adopted for the spindle head, so that it has the advantages of compact structure and high-speed automatic tool change. It is mainly applied to the full-automatic equipment, and can realize to store a certain quantity of cutter and automatic tool changer completing the automatic exchange function of cutter by matching the various tool magazines. The processing efficiency of the numerical control machine tool is further improved, and one clamping is realized, namely, many processes can be completed; and it is assembled into the CNC milling machine or component of the spindle system in the machining center.

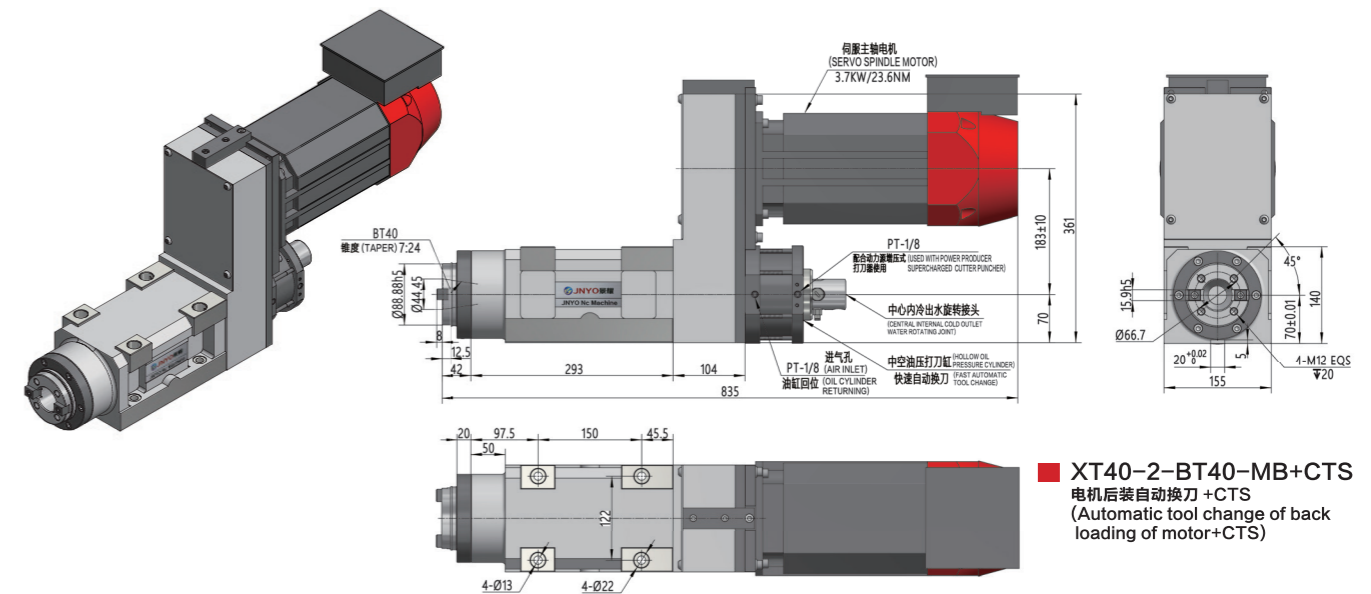
- 缩短非切削时间，提高生产效率，可使非切削时间减少到 20%~30%；减少人工换刀频率的劳动重复性。
The non-cutting time is shortened, the production efficiency is improved, and the non-cutting time can be reduced to 20%~30%; and the labor repeatability of the manual tool change frequency is reduced.
- 工序集中，扩大数控机床工艺范围，减少占地面积。
The process is concentrated, so as to expand the process range of the CNC numerical control machine tool, reduce the floor space.
- 提高加工精度，刀具重复定位精度高，安全可靠的特性。
Improve the machining precision; and moreover, it has characteristics of high repeated positioning accuracy of the cutter and safety and reliability.

产品参数 PRODUCT PARAMETERS				
三相异步电机	Three-phase asynchronous motor	1.5KW...4KW	2P(3000RPM)/4P(1500RPM)/6P(1000RPM)	
伺服主轴电机	Servo spindle motor	1.5KW...5.5KW	额定转速 (Rated Speed) 2000RPM	最高转速 (Max. Speed) 6000RPM
变频电机	Variable frequency motor	1.5KW...4KW	额定频率 (Rated Frequency) 50Hz	最大频率 (Max. Frequency) 100Hz
减速电机	Gear motor	1.5KW...4KW	选配 (Optional)	

- ※ 电机功率及转速可根据需求，使用三角带、同步带、多楔带速比配置。
- ※ 可接受特殊规格动力头定制
- ※ 电机箱体配置方向还能前装左侧 90° / 前装右侧 90° / 后装左侧 90° / 后装右侧 90° / 向上前置 / 向下后置
- ※ The motor power and speed can be configured with speed ratio of triangular belt, synchronous belt and poly V-belt according to the requirement.
- ※ The customization of power head with special specification can be accepted.
- ※ The front loading of left side for 90° / front loading of right side for 90° , back loading of left side for 90° / back loading of right side for 90° and downward preposition/downward postposition can also be carried out in the configuration direction of motor box.

◆ 本公司不断进行研发改进更新设计、规格、结构等，恕不另行通知，本表仅供参考，详细与营销部联系 (0576-80235999)

镗铣主轴头配电机 + 自动换刀 + 中心出水 Boring & Milling Head Unit With The Motor+ATC +CTS



XT40-2-BT40-MB+CTS
电机后装自动换刀+CTS
(Automatic tool change of back
loading of motor+CTS)

主轴头选用中空油压打刀缸配合增压式打刀器使用，专为主轴中心出水而设计；结构紧凑，高速自动换刀的优势。以压缩空气为动力源，油为介质，将输入压力变换，以较高压力输出产生强大推力的工作原理。主轴贯通内冷装置，由精密旋转接头，高压冷却装置组成及冷却液精过滤装置组成，是当今 CNC 机床高效加工和保证主轴长效运转的首选装置，需选择与主轴锥度匹配的中空内冷专用刀柄、拉钉 (CAT40A) 及刀具。

The hollow hydraulic cylinder and booster-type cylinder are adopted for the spindle head, which is specially designed for the spindle central coolant; and it has advantages of compact structure and high-speed automatic tool change. The operating principle is to take the compressed air as the power source and oil as medium, transfer the input pressure, and produce the strong thrust with high pressure output. The spindle runs through the internal cooling device, and is composed of precise rotating joint, high-pressure cooling device and fine filter device of cooling liquid, which is the first choice of efficiently machining of CNC machine and guaranteeing the long-term rotation of the spindle. The special hollow internal cooling knife handle, pull studs (CAT40A) and cutter matched with the taper of spindle shall be selected.

中心出水内冷的特点 (Characteristics of internal cooling of CTS)

- 由于中空内冷主轴的冷却液是从刀具上喷出的，能够直接作用在工件上和刀具的切削部位，冷却效果要优于普通主轴，使加工件的表面质量更好，外冷却由于受刀具旋转离心力的影响冷却液大部份被刀具甩出因此冷却效果不佳。
As the cooling liquid of the hollow internal cooling spindle is ejected from the cutter, the cooling effect of the cutting part which can directly act on the workpiece and cutter is superior to that of the common spindle, so that the surface quality of the machined part is better. The external cooling is affected by the rotary centrifugal force of the cutter, and most of cooling liquid is thrown away by the cutter, therefore, the cooling effect is bad.
- 更适合于深孔加工，在加工深孔时，通过主轴中心的贯穿孔将冷却液输送到刀柄并通过刀柄及刀具上的贯穿孔喷出，所以对刀具的切削部份和工件的冷却效果明显要好于外冷却装置，而且切屑通过高压冷却液能顺利地通过钻头的螺旋槽快速排出，从而能实现连续切削，提高加工效率和刀具耐用度。
It is more suitable for the deep hole working. When processing the deep hole, the cooling liquid is transported to the knife handle through the through hole of the spindle center and ejected through the through hole on the cutter, therefore, the cooling effect of the cutting part and workpiece of the cutter is obviously better than that of the external cooling device, and cuttings can be rapidly discharged through the spiral chute of the drill smoothly by virtue of the high-pressure cooling liquid, thus, realizing the continuous cutting, and improving the processing efficiency and cutter endurance.
- 由于主轴高速旋转加工时冷却液经过主轴中心孔时能带走一部份热量，这就更有利于提高主轴的使用寿命与主轴精度，同时也能避免主轴热变形而影响加工件精度的问题。
The cooling liquid can bring a part of heat through the spindle center hole when the spindle rotates and processes at high speed, which is more beneficial to improving the service lifespan and precision of the spindle, and meanwhile, being able to avoid the problems of affecting the precision of the machined part due to the thermal deformation of the spindle.

■ 出厂附精度检测表 (Table for accuracy detection is attached while delivery)

◆ 本公司不断进行研发改进更新设计、规格、结构等，恕不另行通知，本表仅供参考，详细与营销部联系 (0576-80235999)

XT50-2

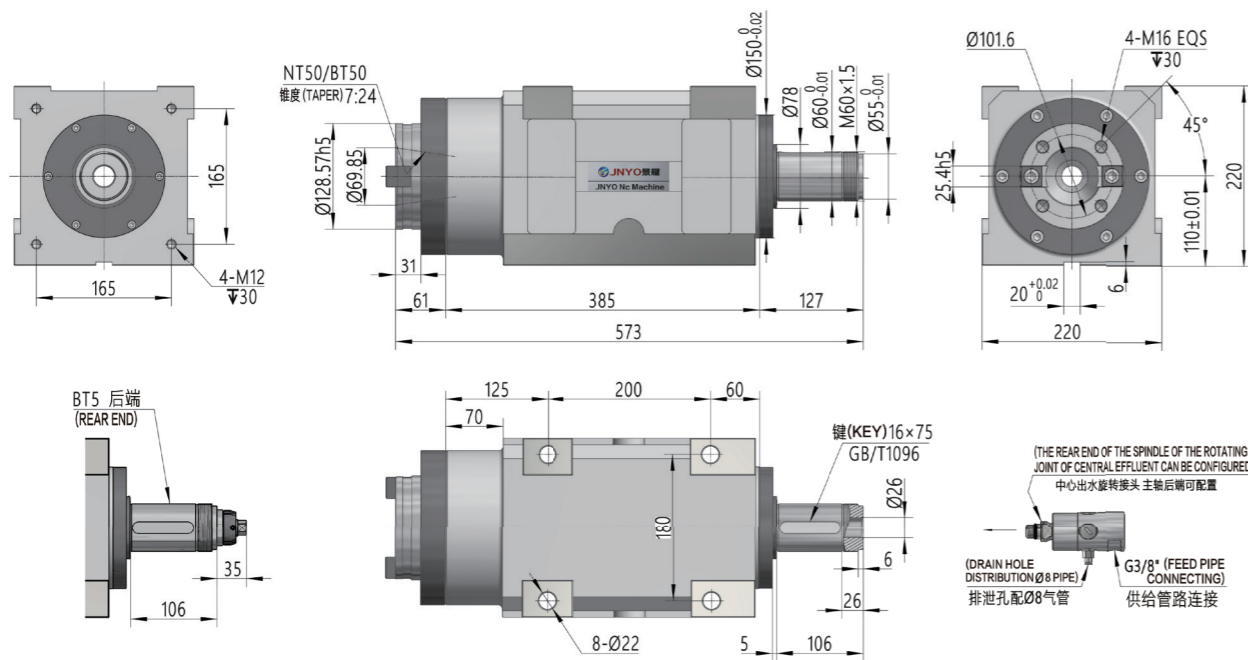
镗铣主轴头 Boring & Milling Head Unit

Made in China Spirit in Global

- XT50-2-NT50
- XT50-2-BT50



- XT50-2 主轴头主轴形式：
XT50-2 is milling spindle head:
- NT50 为锥度 7:24 的传统型后拉杆装刀。
NT50 is the traditional type with the taper of 7:24 and cutter installed with rear axle rod.
- BT50 为锥度 7:24 的自动换刀装置。
NT50 is enhanced spindle form of spindle head is automatic tool changer with the taper of 7:24.

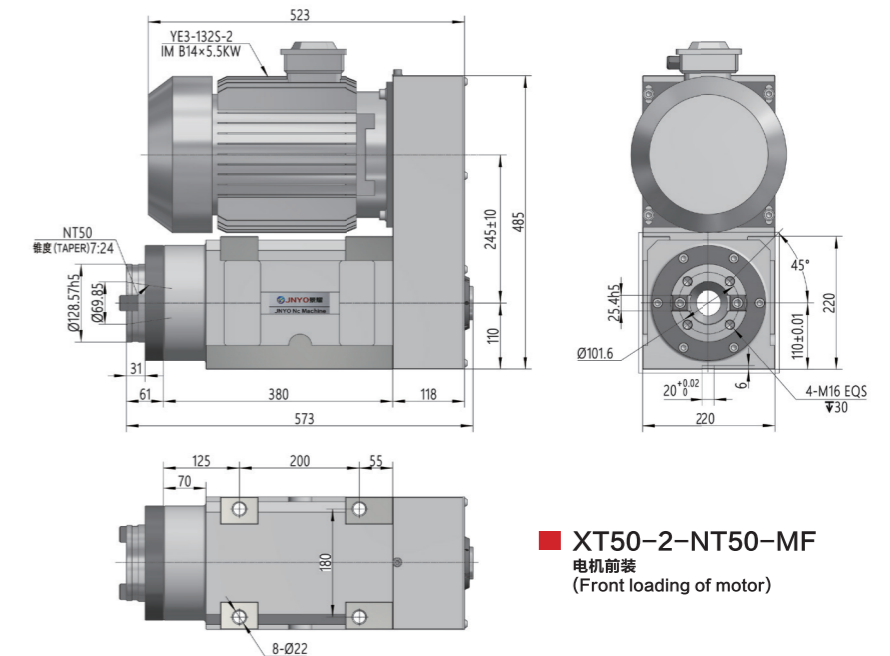
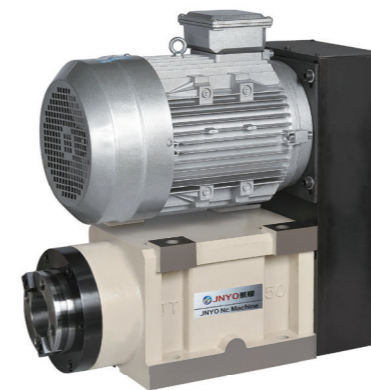


产品参数 PRODUCT PARAMETERS				
规 格	Model	XT50-2		
主 轴	Spindle	NT50/BT50		
最高转速（RPM）	Max. Speed(RPM)	1500	3000	4500 NSK 轴承 (NSK Bearings)
轴 承	Bearing	NN3018/234418BM1 7214AC/DB	7216AC/TBT 7214AC/DB	
润滑方式	Lubrication Mode	高速轴承润滑脂（High-speed Bearing Grease）		
温 升	Temperature Rise	≤ 20℃		
真圆度	Roundness	≤ 0.004mm		
最大动力	Max. Power	≤ 20HP		

■ 出厂附精度检测表 (Table for accuracy detection is attached while delivery)

◆ 本公司不断进行研发改进更新设计、规格、结构等，恕不另行通知，本表仅供参考，详细与营销部联系 (0576-80235999)

镗铣主轴头配电机 Boring & Milling Head Unit With The Motor



■ XT50-2-NT50-MF
电机前装
(Front loading of motor)

产品参数 PRODUCT PARAMETERS

三相异步电机	Three-phase asynchronous motor	5.5KW...15KW	2P(3000RPM)/4P(1500RPM)/6P(1000RPM)	
伺服主轴电机	Servo spindle motor	5.5KW...15KW	额定转速 (Rated Speed) 1500RPM	最高转速 (Max. Speed) 4500RPM
变频电机	Variable frequency motor	5.5KW...15KW	额定频率 (Rated Frequency) 50Hz	最大频率 (Max. Frequency) 100Hz
减速电机	Gear motor	5.5KW...15KW	选配 (Optional)	

※ 电机功率及转速可根据需求，使用三角带、同步带、多楔带速比配置。

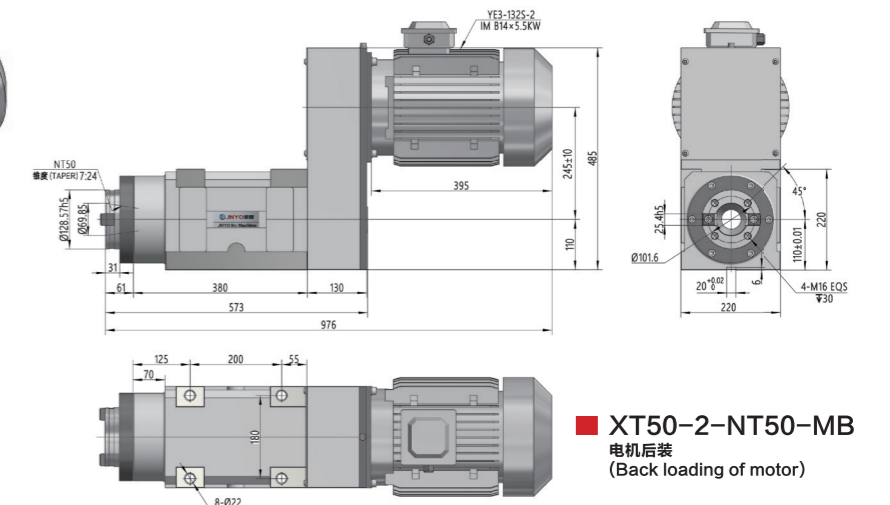
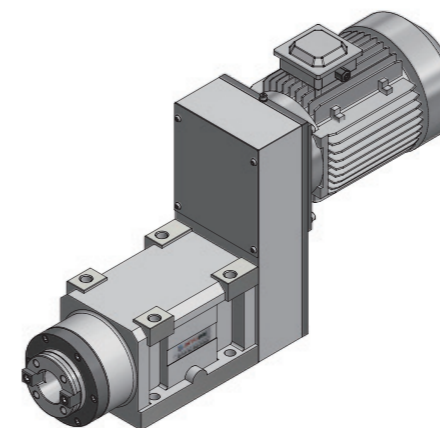
※ 可接受特殊规格动力头定制

※ 电机箱体配置方向还能前装左侧 90° / 前装右侧 90°、后装左侧 90° / 后装右侧 90°、向下前置 / 向下后置。

※ The motor power and speed can be configured with speed ratio of triangular belt, synchronous belt and poly V-belt according to the requirement.

※ The customization of power head with special specification can be accepted.

※ The front loading of left side for 90° / front loading of right side for 90° , back loading of left side for 90° / back loading of right side for 90° and downward preposition/downward postposition can also be carried out in the configuration direction of motor box.



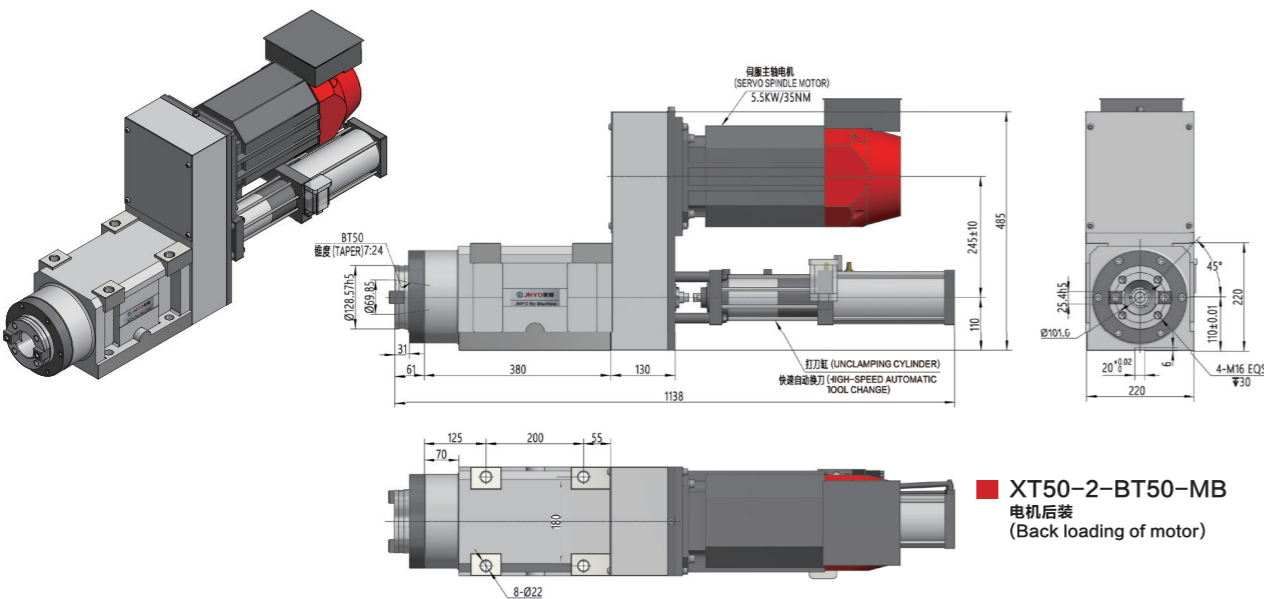
■ XT50-2-NT50-MB
电机后装
(Back loading of motor)

◆ 本公司不断进行研发改进更新设计、规格、结构等，恕不另行通知，本表仅供参考，详细与营销部联系 (0576-80235999)

XT50-2

镗铣主轴头配电机 + 自动换刀
Boring & Milling Head Unit With The Motor+ATC

Made in China Spirit in Global



主轴头选用增压式打刀缸使用，结构紧凑，高速自动换刀的优势。主要应用到全自动化设备，可配合各种刀库实现储备一定数量的刀具并完成刀具自动交换功能的自动换刀装置。进一步提高数控机床的加工效率，实现一次装夹即可完成多道工序；组配成为数控铣床或加工中心主轴系统部件。

The booster-type unclamping cylinder is adopted for the spindle head, so that it has the advantages of compact structure and high-speed automatic tool change. It is mainly applied to the full-automatic equipment, and can realize to store a certain quantity of cutter and automatic tool changer completing the automatic exchange function of cutter by matching the various tool magazines. The processing efficiency of the numerical control machine tool is further improved, and one clamping is realized, namely, many processes can be completed; and it is assembled into the CNC milling machine or component of the spindle system in the machining center.

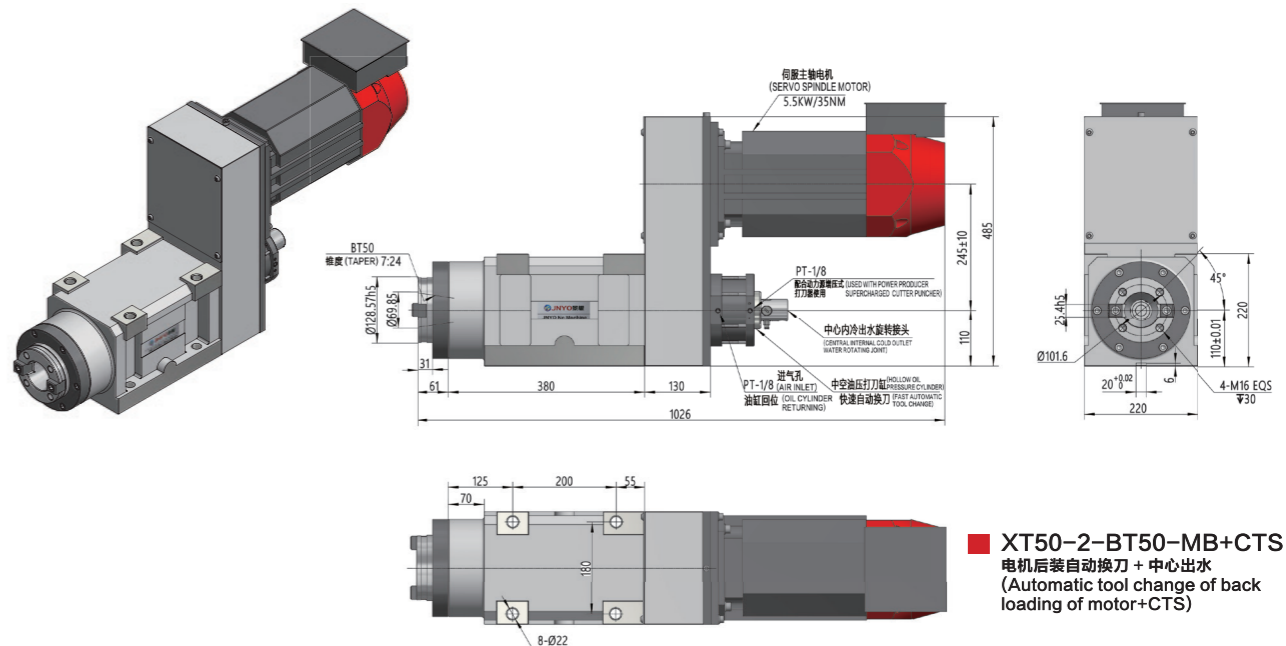
- 缩短非切削时间，提高生产效率，可使非切削时间减少到 20%~30%；减少人工换刀频率的劳动重复性。
The non-cutting time is shortened, the production efficiency is improved, and the non-cutting time can be reduced to 20%~30%; and the labor repeatability of the manual tool change frequency is reduced.
- 工序集中，扩大数控机床工艺范围，减少占地面积。
The process is concentrated, so as to expand the process range of the CNC numerical control machine tool, reduce the floor space.
- 提高加工精度，刀具重复定位精度高，安全可靠的特性。
Improve the machining precision; and moreover, it has characteristics of high repeated positioning accuracy of the cutter and safety and reliability.

产品参数 PRODUCT PARAMETERS				
三相异步电机	Three-phase asynchronous motor	5.5KW...15KW	2P(3000RMP)/4P(1500RMP)/6P(1000RMP)	
伺服主轴电机	Servo spindle motor	5.5KW...15KW	额定转速 (Rated Speed) 1500RPM	最高转速 (Max. Speed) 4500RPM
变频电机	Variable frequency motor	5.5KW...15KW	额定频率 (Rated Frequency) 50Hz	最大频率 (Max. Frequency) 100Hz
减速电机	Gear motor	5.5KW...15KW	选配 (Optional)	

- ※ 电机功率及转速可根据需求，使用三角带、同步带、多楔带速比配置。
- ※ 可接受特殊规格动力头定制
- ※ 电机箱体配置方向还能前装左侧 90° / 前装右侧 90°、后装左侧 90° / 后装右侧 90°、向下前置 / 向下后置。
- ※ The motor power and speed can be configured with speed ratio of triangular belt, synchronous belt and poly V-belt according to the requirement.
- ※ The customization of power head with special specification can be accepted.
- ※ The front loading of left side for 90° / front loading of right side for 90° , back loading of left side for 90° / back loading of right side for 90° and downward preposition/downward postposition can also be carried out in the configuration direction of motor box.

◆ 本公司不断进行研发改进更新设计、规格、结构等，恕不另行通知，本表仅供参考，详细与营销部联系 (0576-80235999)

镗铣主轴头配电机 + 自动换刀 + 中心出水
Boring & Milling Head Unit With The Motor+ATC+CTS



主轴头选用中空油压打刀缸配合增压式打刀器使用，专为主轴中心出水而设计；结构紧凑，高速自动换刀的优势。以压缩空气为动力源，油为介质，将输入压力变换，以较高压力输出产生强大推力的工作原理。主轴贯通内冷装置，由精密旋转接头，高压冷却装置组成及冷却液精过滤装置组成，是当今 CNC 机床高效加工和保证主轴长效运转的首选装置，需选择与主轴锥度匹配的中空内冷专用刀柄、拉钉及刀具。

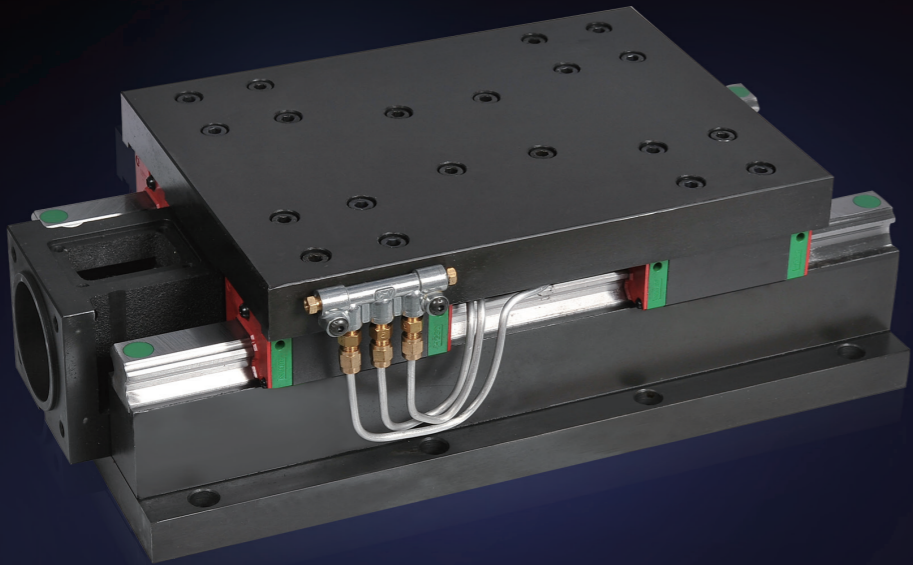
The supercharged type cylinder is adopted for the spindle head, so that it has the advantages of compact structure and high-speed automatic tool change. It is mainly applied to the full-automatic equipment, and can realize to store a certain quantity of cutter and automatic tool changer completing the automatic exchange function of cutter by matching the various tool magazines. The processing efficiency of the CNC machine tool is further improved, and one clamping is realized, namely, many processes can be completed; and it is assembled into the CNC milling machine or component of the spindle system in the machining center. The gearbox is composed of the high speed (1:1), neutral gear and low speed (1:4); and the rough machining and finish machining become possible at the same time by virtue of the high and low speed switching which can shift the gear.

中心出水内冷的特点 (Characteristics of internal cooling of CTS)

- 由于中空内冷主轴的冷却液是从刀具上喷出的，能够直接作用在工件上和刀具的切削部位，冷却效果要优于普通主轴，使加工件的表面质量更好，外冷却由于受刀具旋转离心力的影响冷却液大部份被刀具甩出因此冷却效果不佳。
As the cooling liquid of the hollow internal cooling spindle is ejected from the cutter, the cooling effect of the cutting part which can directly act on the workpiece and cutter is superior to that of the common spindle, so that the surface quality of the machined part is better. The external cooling is affected by the rotary centrifugal force of the cutter, and most of cooling liquid is thrown away by the cutter, therefore, the cooling effect is bad.
 - 更适合于深孔加工，在加工深孔时，通过主轴中心的贯穿孔将冷却液输送到刀柄并通过刀柄及刀具上的贯穿孔喷出，所以对刀具的切削部份和工件的冷却效果明显要好于外冷却装置，而且切屑通过高压冷却液能顺利地通过钻头的螺旋槽快速排出，从而能实现连续切削，提高加工效率和刀具耐用度。
It is more suitable for the deep hole working. When processing the deep hole, the cooling liquid is transported to the knife handle through the through hole of the spindle center and ejected through the through hole on the cutter, therefore, the cooling effect of the cutting part and workpiece of the cutter is obviously better than that of the external cooling device, and cuttings can be rapidly discharged through the spiral chute of the drill smoothly by virtue of the high-pressure cooling liquid, thus, realizing the continuous cutting, and improving the processing efficiency and cutter endurance.
 - 由于主轴高速旋转加工时冷却液经过主轴中心孔时能带走一部份热量，这就更有利于提高主轴的使用寿命与主轴精度，同时也能避免主轴热变形而影响加工件精度的问题。
The cooling liquid can bring a part of heat through the spindle center hole when the spindle rotates and processes at high speed, which is more beneficial to improving the service lifespan and precision of the spindle, and meanwhile, being able to avoid the problems of affecting the precision of the machined part due to the thermal deformation of the spindle.
- 出厂附精度检测表 (Table for accuracy detection is attached while delivery)

◆ 本公司不断进行研发改进更新设计、规格、结构等，恕不另行通知，本表仅供参考，详细与营销部联系 (0576-80235999)

数控线轨滑台
CNC Linear Guideway Sliding Table



数控线轨滑台其设计合理、刚性好、精度高、高速往复运动、性能可靠、外形美观；其结构简单，便于维修。配置组合机床、普通机床改造及其自动化生产线不可缺少的基础动力部件。线轨滑台刚性高，热变形小，进给稳定性高，动态性能好。从而保证了加工状态下（负荷下）的实际精度。数控线轨滑台很容易实现高效运作及数控化，所以是实现高精度柔性化的理想部件。配上镗铣主轴头或各种切削头，可分别完成镗、铣、钻、攻、铰、车、镨、等工序加工。

CNC wire rail sliding table is reasonable in design, good rigidity, high precision, high speed reciprocating motion, reliable performance, beautiful appearance; the utility model has the advantages of simple structure and is convenient for maintenance. Configuration combined machine tools, general machine tool transformation and its automatic production line is an essential part of the foundation. Slide rail line high rigidity, small thermal deformation, high feed stability, good dynamic performance. Thus ensuring the actual accuracy of the processing state (load). NC line rail sliding table is to achieve efficient operation and NC easily. So it is ideal to achieve high precision flexible components. With boring and milling spindle or cutting head can be completed, boring, milling, drilling, tapping, reaming, reaming, cars, and other processes.

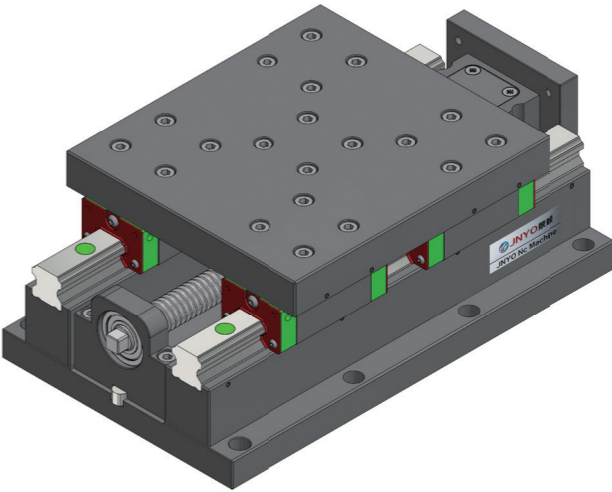
特点 (Characteristics)

- 采用精密线轨，配合精密滚珠丝杆，做伺服传动，车削、高速铣削往复动作快。
Using precision line rail, cooperate with precision ball screw, servo drive, high speed milling and turning reciprocating fast.
- 传动更轻松，易于实现高速化，动态 / 静态精度高，稳定性更好。
High speed transmission more relaxed, easy to implement, dynamic/static precision, better stability.
- 适用于小型数控 CNC 及自动化生产线，快速切削，多种加工场合。
Suitable for small numerical control CNC and automatic production line, fast cutting, many kinds of processing occasions.
- 结构紧凑，机械效率高，定位精确。
Compact structure, high mechanical efficiency, accurate positioning.
- 运行平稳，没有冲击，导轨不宜磨损，易于维护。
Running smoothly, no impact, the guide is not easy to wear and tear, easy to maintain.

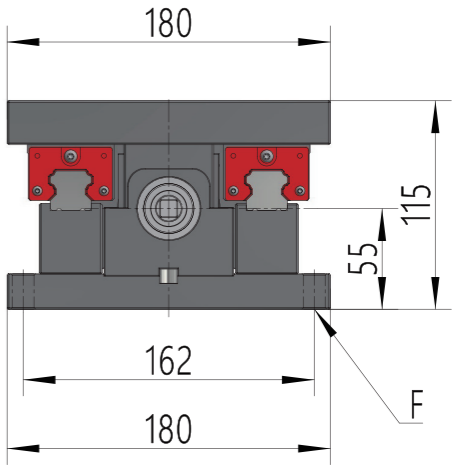
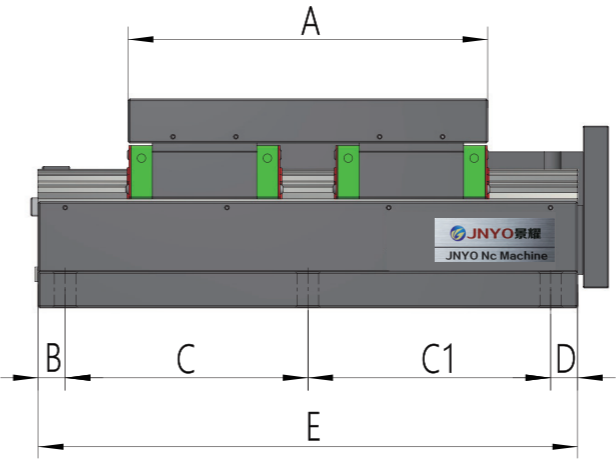
LRS180

Made in China Spirit in Global

数控线轨滑台
CNC Linear Guideway Sliding Table



- 可接受特殊规格线轨滑台定制。
Customization of slipway of rail with special specification is accepted .
- 导轨防护罩、伺服电机功率及转矩可根据需求配置。
Guide rail shield, power and torque of servo motor can be provided as required.



产品参数 PRODUCT PARAMETERS

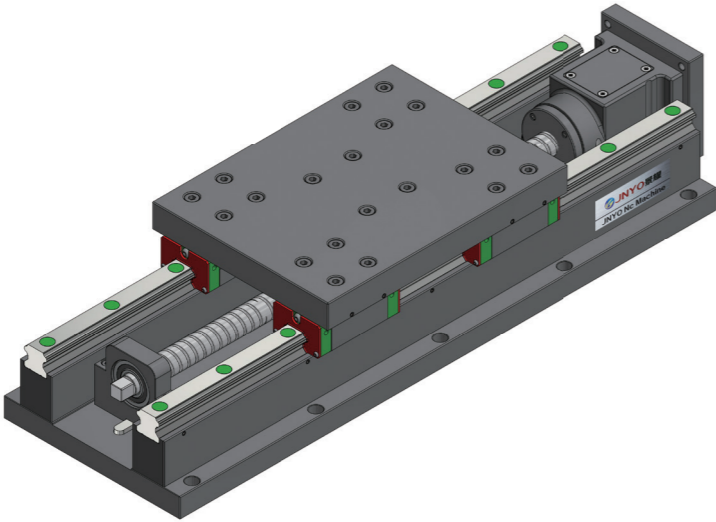
型 号 Model	A	B	C	C1	D	E	F	滚珠丝杠 Ball screw	轴 径 Shaft diameter	行 程 Stroke
LRS180x300	200	20	130	130	20	300	6-Φ12	Φ20x4	Φ15	100
LRS180x360	200	25	155	155	25	360	6-Φ12			160
	250									110
LRS180x420	200	30	180	180	30	420	6-Φ12			220
	250									170

◆ 本公司不断进行研发改进更新设计、规格、结构等，恕不另行通知，本表仅供参考，详细与营销部联系（0576-80235999）

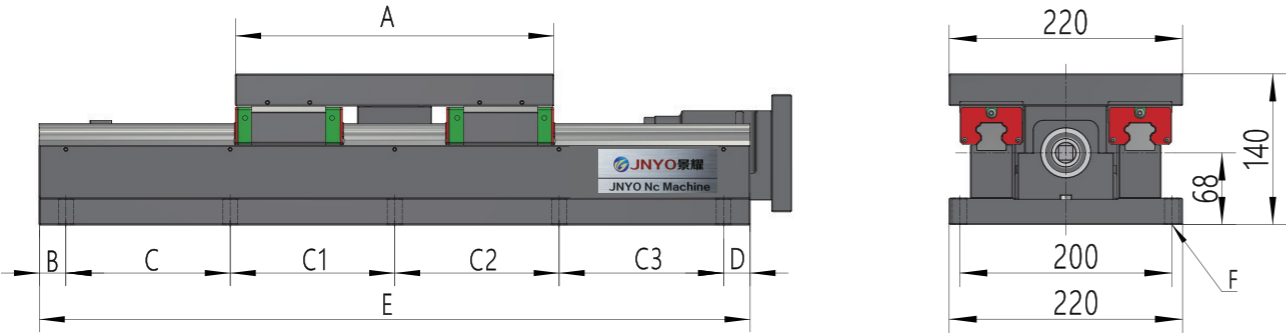
LRS220

数控线轨滑台 CNC Linear Guideway Sliding Table

Made in China Spirit in Global



- 可接受特殊规格线轨滑台定制。
Customization of slipway of rail with special specification is accepted .
- 导轨防护罩、伺服电机功率及转矩可根据需求配置。
Guide rail shield, power and torque of servo motor can be provided as required.



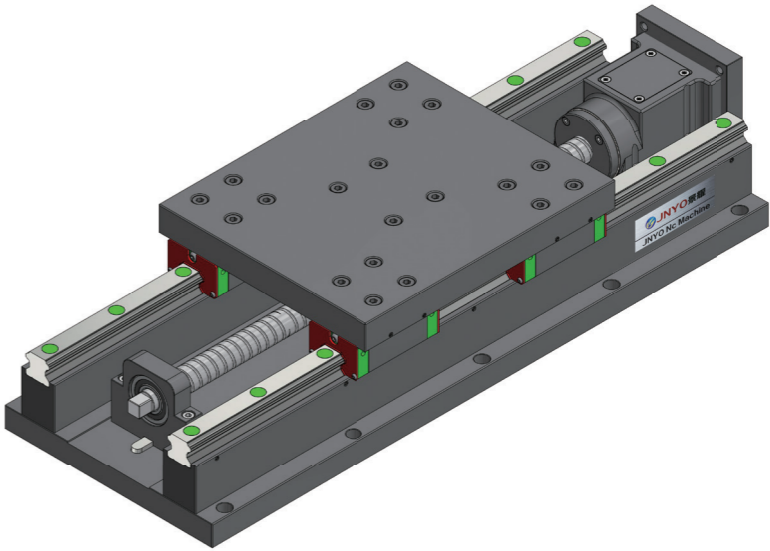
产品参数 PRODUCT PARAMETERS

型号 Model	A	B	C	C1	C2	C3	D	E	F	滚珠丝杠 Ball screw	轴 径 Shaft diameter	行 程 Stroke
LRS220x420	300	30	120	120	120	--	30	420	8-Φ14	Φ25x5	Φ17	120
LRS220x520	300 420	20	160	160	160	--	20	520	8-Φ14			220 100
LRS220x670	300 420	25	155	155	155	155	25	670	10-Φ14			370 250
LRS220x800	300 420	30	185	185	185	185	30	800	10-Φ14			500 380

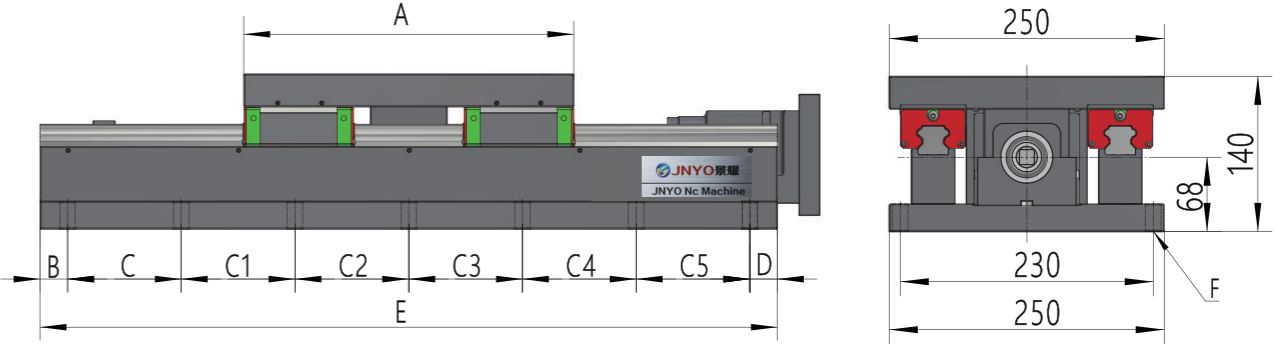
LRS250

数控线轨滑台 CNC Linear Guideway Sliding Table

Made in China Spirit in Global



- 可接受特殊规格线轨滑台定制。
Customization of slipway of rail with special specification is accepted .
- 导轨防护罩、伺服电机功率及转矩可根据需求配置。
Guide rail shield, power and torque of servo motor can be provided as required.



产品参数 PRODUCT PARAMETERS

型 号 Model	A	B	C	C1	C2	C3	C4	C5	D	E	F	滚珠丝杠 Ball screw	轴 径 Shaft diameter	行 程 Stroke
LRS250x420	300	30	120	120	120	--	--	--	30	420	8-Φ14	Φ25x5	Φ17	120
LRS250x560	300 420	25	170	170	170	--	--	--	25	560	8-Φ14			260 140
LRS250x670	300 420	25	155	155	155	155	--	--	25	670	10-Φ14			370 250
LRS250x800	300 420	30	185	185	185	185	--	--	30	800	10-Φ14			500 380
LRS250x940	300 420	30	176	176	176	176	176	--	30	940	12-Φ14			640 520
LRS250x1200	300 420	30	190	190	190	190	190	190	30	1200	14-Φ14			900 780

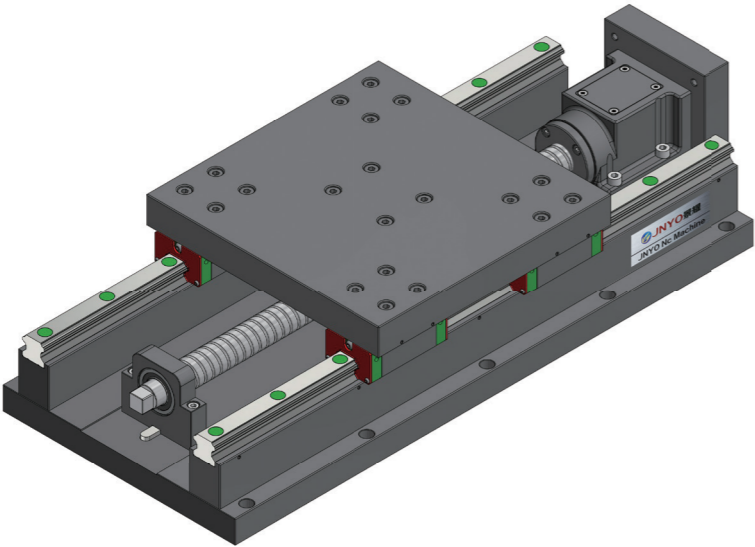
◆本公司不断进行研发改进更新设计、规格、结构等，恕不另行通知，本表仅供参考，详细与营销部联系（0576-80235999）

◆本公司不断进行研发改进更新设计、规格、结构等，恕不另行通知，本表仅供参考，详细与营销部联系（0576-80235999）

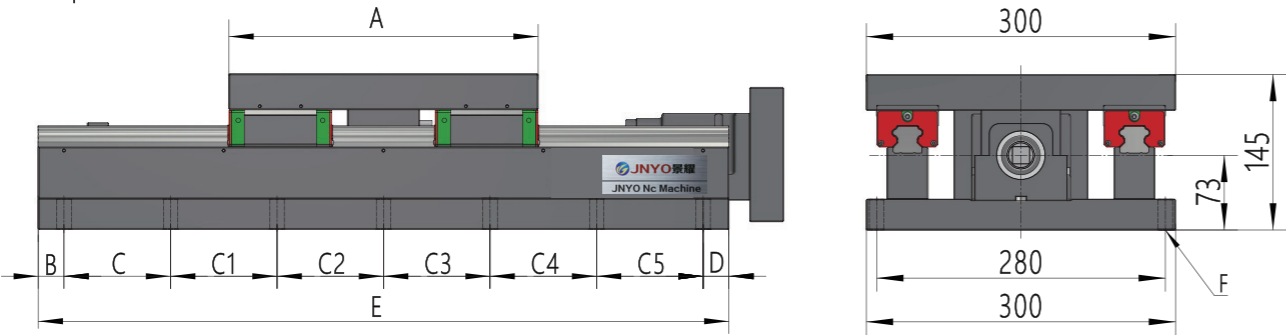
LRS300

数控线轨滑台 CNC Linear Guideway Sliding Table

Made in China Spirit in Global



- 可接受特殊规格线轨滑台定制。
Customization of slipway of rail with special specification is accepted .
- 导轨防护罩、伺服电机功率及转矩可根据需求配置。
Guide rail shield, power and torque of servo motor can be provided as required.



产品参数 PRODUCT PARAMETERS

型 号 Model	A	B	C	C1	C2	C3	C4	C5	D	E	F	漆珠丝杠 Ball screw	轴 径 Shaft diameter	行 程 Stroke
LRS300x420	300	30	120	120	120	--	--	--	30	420	8-Φ14	Φ32x6	Φ22	120
LRS300x560	300	25	170	170	170	--	--	--	25	560	8-Φ14			260
	420													140
LRS300x670	300	25	155	155	155	155	--	--	25	670	10-Φ14			370
	420													250
LRS300x800	300	30	185	185	185	185	--	--	30	800	10-Φ14			500
	420													380
LRS300x940	300	30	176	176	176	176	176	--	30	940	12-Φ14			640
	420													520
LRS300x1200	300	30	190	190	190	190	190	190	30	1200	14-Φ14			900
	420													780

◆本公司不断进行研发改进更新设计、规格、结构等，恕不另行通知，本表仅供参考，详细与营销部联系（0576-80235999）

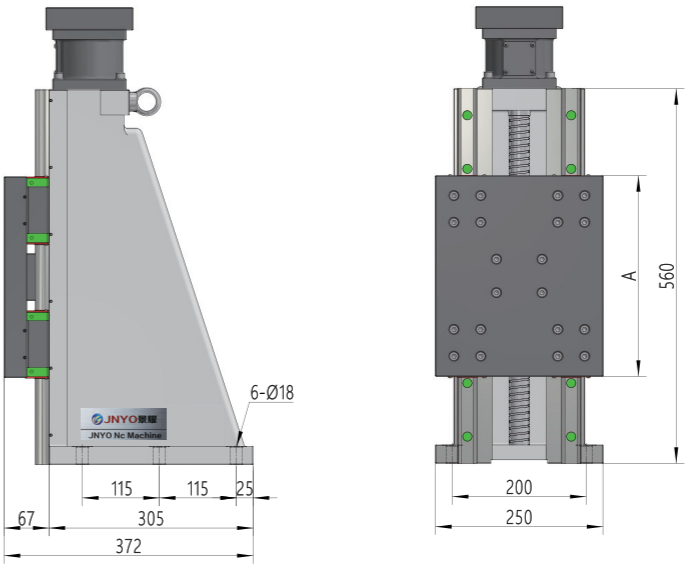
VRS250

数控立式线轨滑台 CNC Vertical Linear Guideway Sliding Table

Made in China Spirit in Global



- 可接受特殊规格线轨滑台定制。
Customization of slipway of rail with special specification is accepted .
- 导轨防护罩、伺服电机功率及转矩可根据需求配置。
Guide rail shield, power and torque of servo motor can be provided as required.



产品参数 PRODUCT PARAMETERS

型 号 Model	工作台长度 A Table length A	底座面积 Bed area	总 高 High total	滚珠丝杠 Ball screw	轴 径 Shaft diameter	行 程 Stroke
VRS250x560	220	250x305	560	Φ32x6	Φ22	340
	300					260

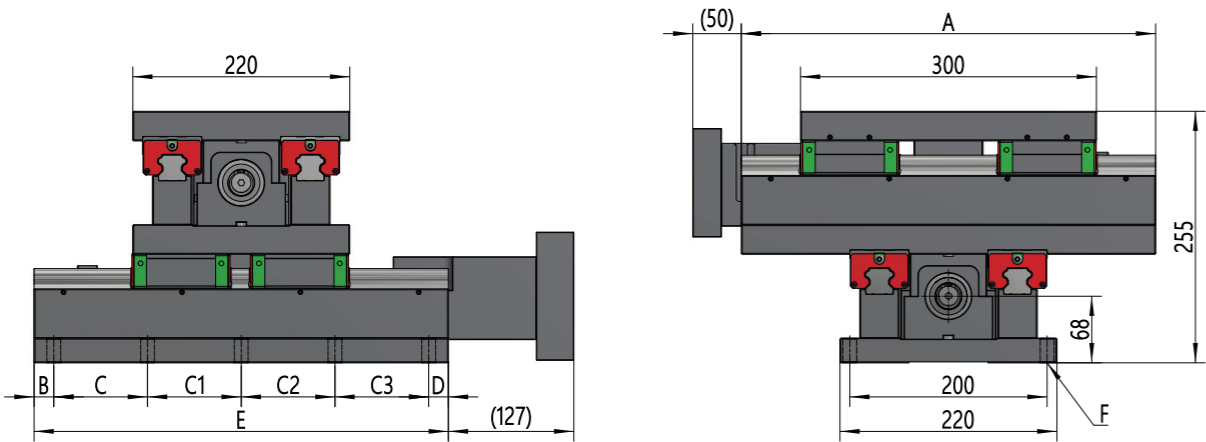
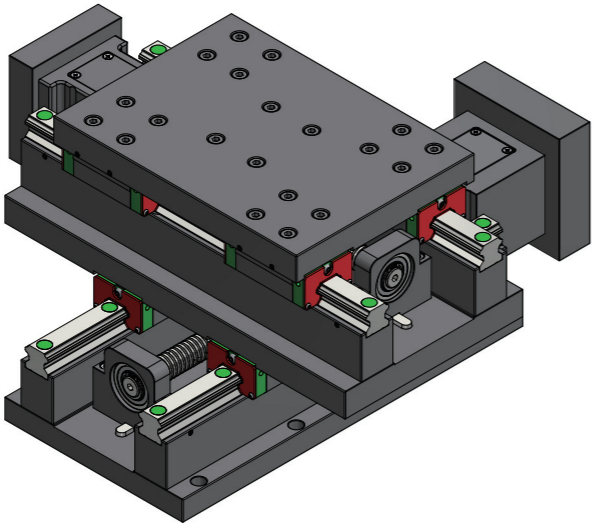
◆本公司不断进行研发改进更新设计、规格、结构等，恕不另行通知，本表仅供参考，详细与营销部联系（0576-80235999）

CRS220

数控十字线轨滑台
NC Cross rail slide

Made in China Spirit in Global

- 可接受特殊规格十字线轨滑台定制。
Acceptable line cross rail slider to customize special specifications.
- 导轨防护罩、伺服电机可根据需求加装配置。
Guide shield and servo motor can be configured according to requirements.



产品参数 PRODUCT PARAMETERS

型号 Model	A	B	C	C1	C2	C3	D	E	F	滚珠丝杠 Ball screw	轴 径 Shaft diameter	下行程 Down Stroke	上行程 Up Stroke
CRS22-2012	420	30	120	120	120	--	30	420	8-Φ14	Φ25x5	Φ17	200	120
CRS22-3012		20	160	160	160	--	20	520	8-Φ14			300	
CRS22-4512		25	155	155	155	155	25	670	10-Φ14			450	
CRS22-5812		30	185	185	185	185	30	800	10-Φ14			580	
CRS22-2022		30	120	120	120	--	30	420	8-Φ14			200	220
CRS22-3022	520	20	160	160	160	--	20	520	8-Φ14			300	
CRS22-4522		25	155	155	155	155	25	670	10-Φ14			450	
CRS22-5822		30	185	185	185	185	30	800	10-Φ14			580	

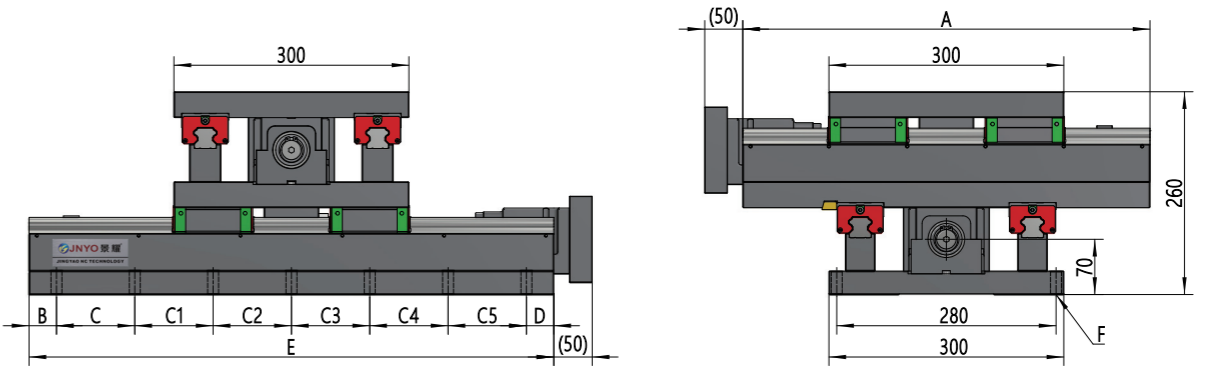
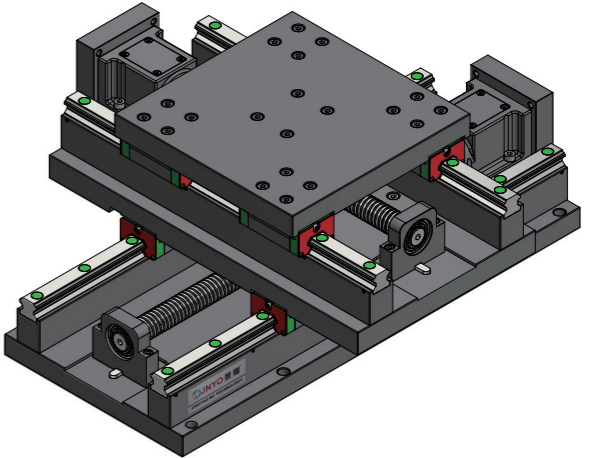
◆本公司不断进行研发改进更新设计、规格、结构等，恕不另行通知，本表仅供参考，详细与营销部联系（0576-80235999）

CRS300

数控十字线轨滑台
NC Cross rail slide

Made in China Spirit in Global

- 可接受特殊规格十字线轨滑台定制。
Acceptable line cross rail slider to customize special specifications.
- 导轨防护罩、伺服电机可根据需求加装配置。
Guide shield and servo motor can be configured according to requirements.

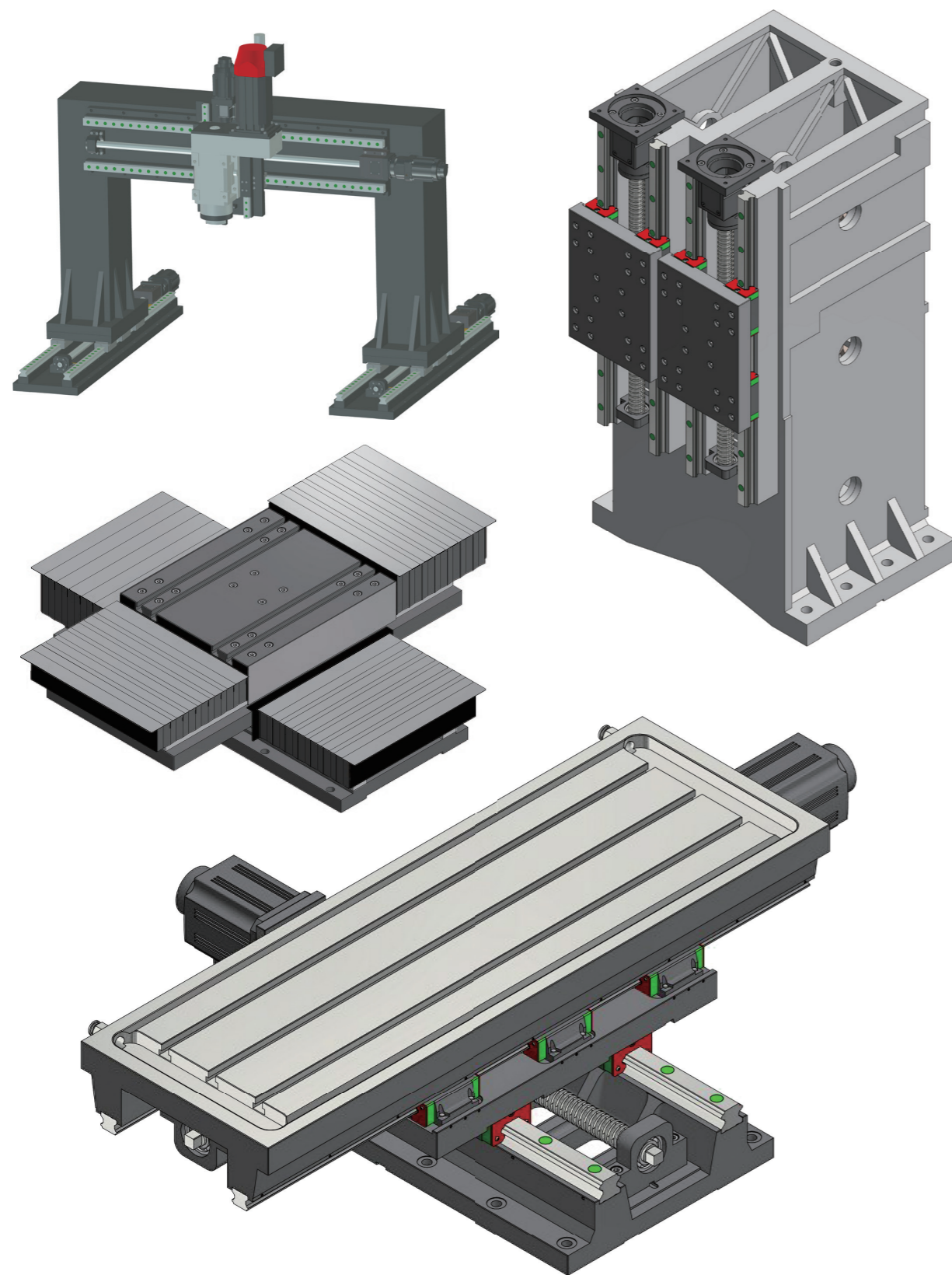


产品参数 PRODUCT PARAMETERS

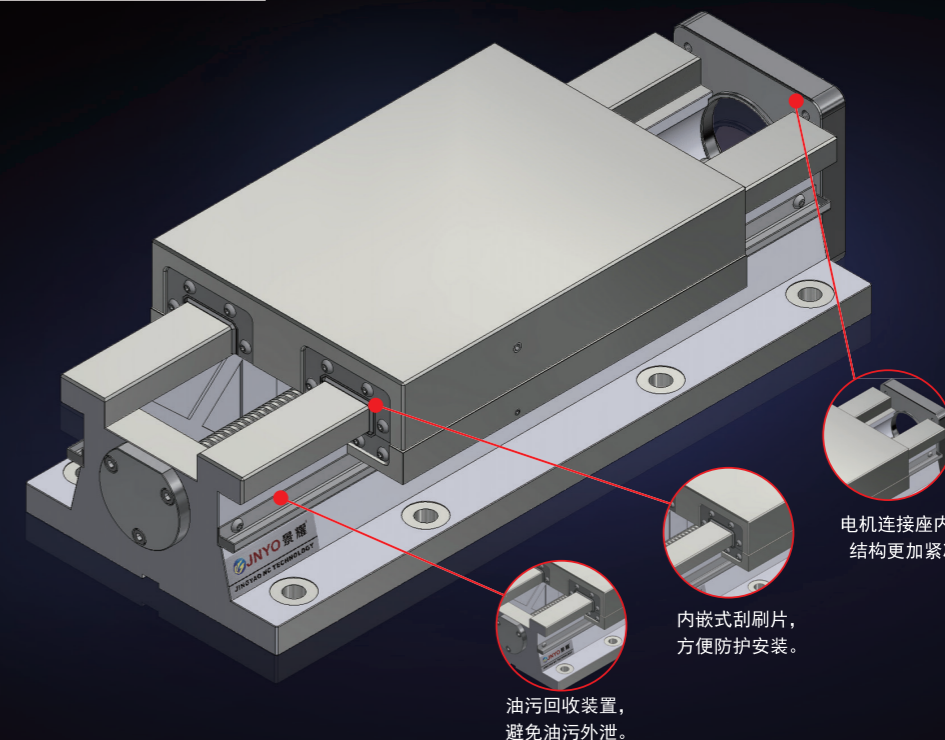
型 号 Model	A	B	C	C1	C2	C3	C4	C5	D	E	F	滚珠丝杠 Ball screw	轴 径 Shaft diameter	下行程 Down Stroke	上行程 Up Stroke
CRS30-1212	420	30	120	120	120	--	--	--	30	420	8-Φ14	Φ32x6	Φ22	120	120
CRS30-2612		25	170	170	170	--	--	--	25	550	8-Φ14			260	
CRS30-3712		25	155	155	155	155	--	--	25	670	10-Φ14			370	
CRS30-5012		30	185	185	185	185	--	--	30	800	10-Φ14			500	
CRS30-6412		30	176	176	176	176	176	-	30	940	12-Φ14			640	
CRS30-9012		30	190	190	190	190	190	190	30	1200	14-Φ14			900	260
CRS30-1226	560	30	120	120	120	--	--	--	30	420	8-Φ14			120	
CRS30-2626		25	170	170	170	--	--	--	25	560	8-Φ14			260	
CRS30-3726		25	155	155	155	155	--	--	25	670	10-Φ14			370	
CRS30-5026		30	185	185	185	185	--	--	30	800	10-Φ14			500	
CRS30-6426		30	176	176	176	176	176	--	30	940	12-Φ14			640	
CRS30-9026		30	190	190	190	190	190	190	30	1200	14-Φ14			900	

◆本公司不断进行研发改进更新设计、规格、结构等，恕不另行通知，本表仅供参考，详细与营销部联系（0576-80235999）

特殊规格定制 Special Specifications For Customized



数控硬轨滑台 NC hard rail slide



电机连接座内置，
结构更加紧凑。

内嵌式刮刷片，
方便防护安装。

油污回收装置，
避免油污外泄。

数控硬轨矩形滑台其设计合理、刚性好、性能可靠、承载能力好、外形美观。配置是组合机床、普通机床改造及其自动化生产线不可缺少的基础动力部件。硬轨矩形滑台其高刚性、重载好、进给稳定性高的优势；被广泛应用到粗加工重切削。配上镗铣主轴头或各种切削头，可分别完成镗、铣、钻、攻、铰、车、镦、等工序加工。

The numerical control hard-rail rectangular slipway has a proper design, good rigidity, reliable performance, good load carrying capacity and beautiful appearance. The configuration is the necessary basic power parts for combination machines, normal machine reformation and automatic production line. The hard-rail rectangular slipway has high rigidity, outstanding load bearing capacity and high stability of feeding; it is widely used in rough processing and heavy cutting. With the boring and milling spindle head or various cutting heads, it can complete the procedure of boring, milling, tapping, drilling, twisting, countersink drilling, etc.

特点 (Characteristics)

- 自主研发制造，配合精密滚珠丝杆，做伺服传动；导轨表面均经过多次热处理等标准工艺，表面硬度更深，硬度 \geq HRC55。

Independent research and development and servo drive is made with accurate ball screw; the surface of guide rail is processed with standard technology, such as several rounds of thermal process, etc. The surface hardness is higher, hardness \geq HRC55.

- 主体精模高韧铸铁铸造，经人工震动时效及自然双重时效处理；降低应力增加抗变形能力和稳定性。

The housing is cast with accurate die and the cast iron of high toughness and processed by means of manual vibration aging and natural aging effect to reduce the stress and increase the deformation resistance performance and stability.

- 滑台为工字型矩形导轨，其结构具有承载能力大、刚度高、热变形小、进给稳定性高的特性，从而保证了加工状态下（负荷下）的实际精度。

The slipway is the I-shaped rectangular slipway with high bearing capacity and rigidity and low thermal deformation and high feeding stability so that the practical accuracy under processing condition (load) can be assured.

- 导轨面配合工作台精密磨削加工并采用人工铲刮、刮花、配研技术调整镶条和接触面，最终精密装配完成。

The slipway surface will operate with the work table to perform accurate grinding and cutting, and manual scraping, shoveling, running-in technology which is adjusted to gibs and contact surface are adopted to complete the final accurate assembly.

- 润滑系统采用内置控油器，保证每个接触面均匀润滑，有效提高滑台使用寿命。

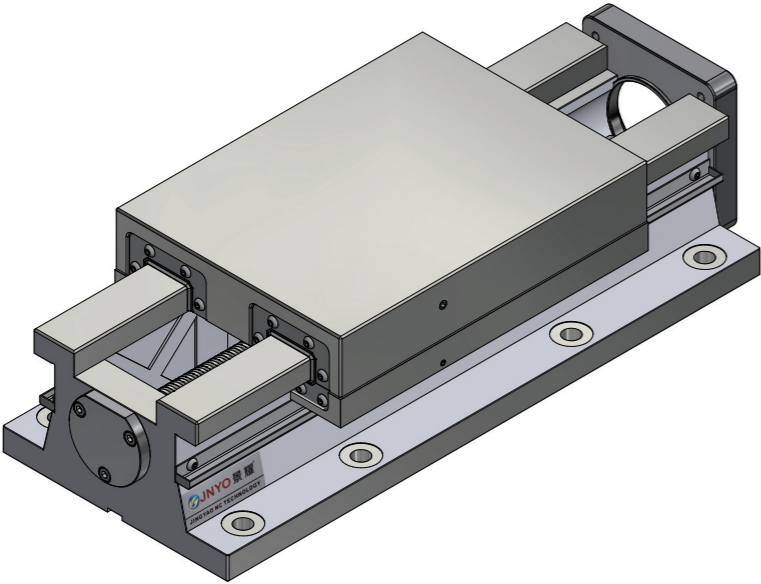
The lubricating system adopts a built-in oil control device to ensure uniform lubrication of each contact surface and effectively improve the service life of the sliding table.

◆本公司不断进行研发改进更新设计、规格、结构等，恕不另行通知，本表仅供参考，详细与营销部联系（0576-80235999）

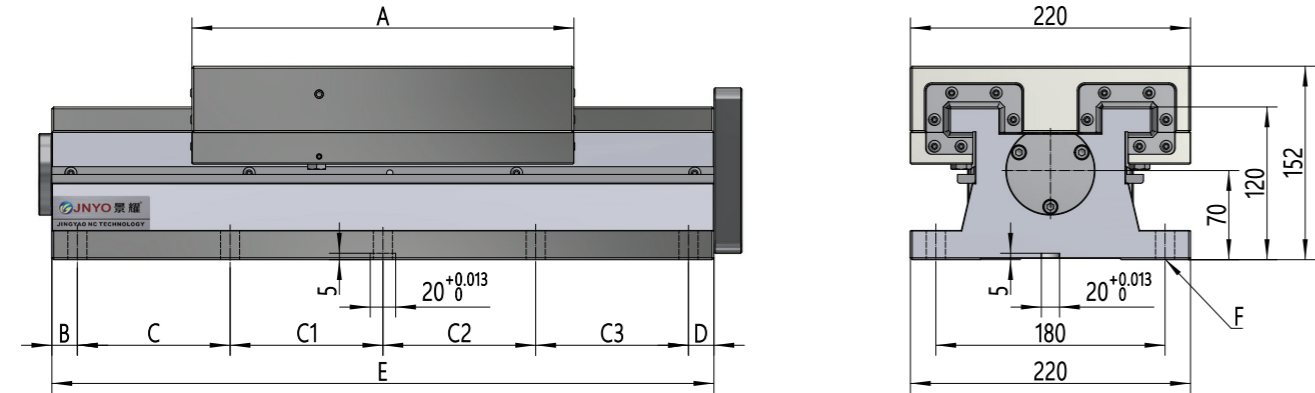
URS220

数控硬轨滑台 NC hard rail slide

Made in China Spirit in Global



- 导轨防护罩、伺服电机可根据需求加装配置。
Guide shield and servo motor can be configured according to requirements.



产品参数 PRODUCT PARAMETERS

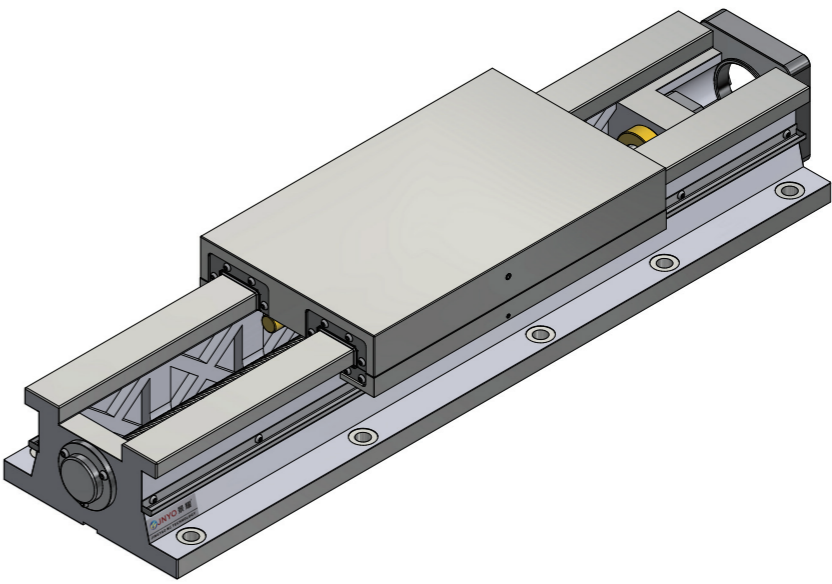
型 号 Model	A	B	C	C1	C2	C3	D	E	F	滚珠丝杠 Ball screw	轴 径 Shaft diameter	行 程 Stroke
URS220x420	300	25	115	115	130	--	35	420	8-Φ15	Φ25x6	Φ17	120
URS220x520	300	35	130	205	115	--	35	520	8-Φ15			220
	420											100
URS220x670	300	35	115	205	165	115	35	670	10-Φ15			370
	420											250
URS220x800	300	35	245	205	165	115	35	800	10-Φ15			500
	420											380

◆本公司不断进行研发改进更新设计、规格、结构等，恕不另行通知，本表仅供参考，详细与营销部联系（0576-80235999）

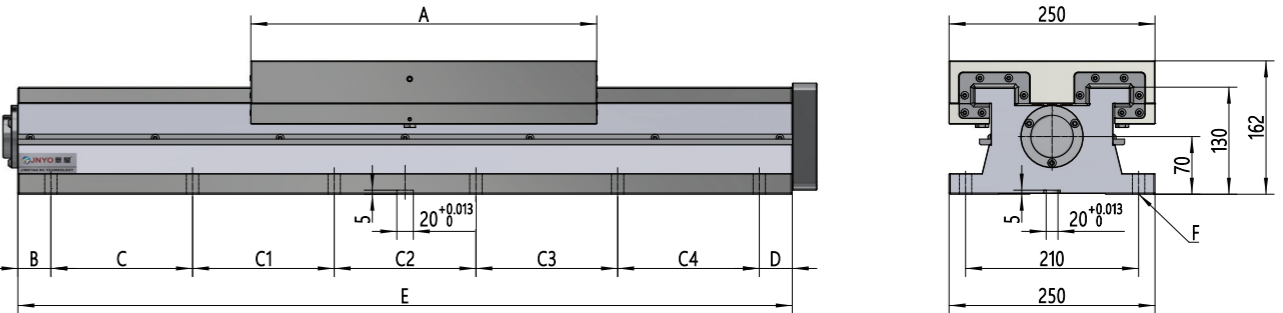
URS250

数控硬轨滑台 NC hard rail slide

Made in China Spirit in Global



- 导轨防护罩、伺服电机可根据需求加装配置。
Guide shield and servo motor can be configured according to requirements.



产品参数 PRODUCT PARAMETERS

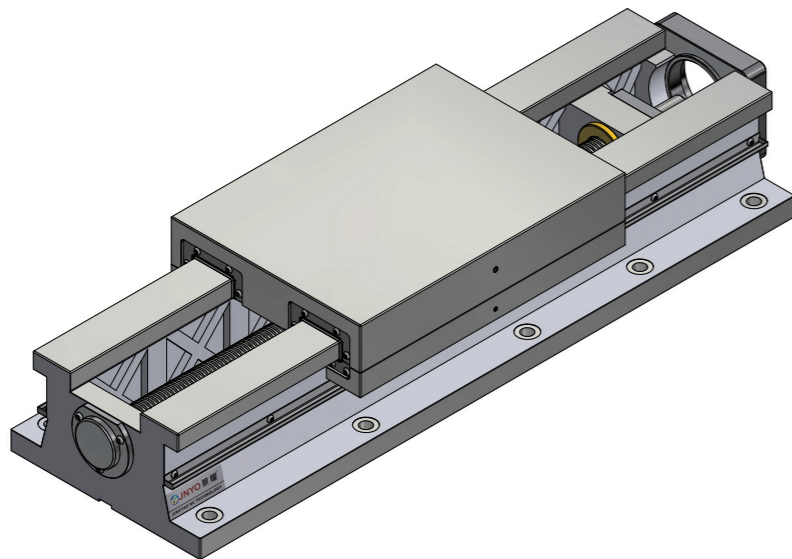
型 号 Model	A	B	C	C1	C2	C3	C4	D	E	F	滚珠丝杠 Ball screw	轴 径 Shaft diameter	行 程 Stroke
URS250x420	300	25	115	115	130	--	--	35	420	8-Φ17	Φ32x6	Φ22	120
URS250x560	300	35	135	220	135	--	--	35	560	8-Φ17			260
	420												140
URS250x670	300	35	115	205	165	115	--	35	670	10-Φ17			370
	420												250
URS250x800	300	35	245	205	165	115	--	35	800	10-Φ17			500
	420												380
URS250x940	300	40	247	255	178	180	--	40	940	10-Φ17			640
	420												520
URS250x1200	300	40	240	200	280	200	200	40	1200	12-Φ17			900
	420												780

◆本公司不断进行研发改进更新设计、规格、结构等，恕不另行通知，本表仅供参考，详细与营销部联系（0576-80235999）

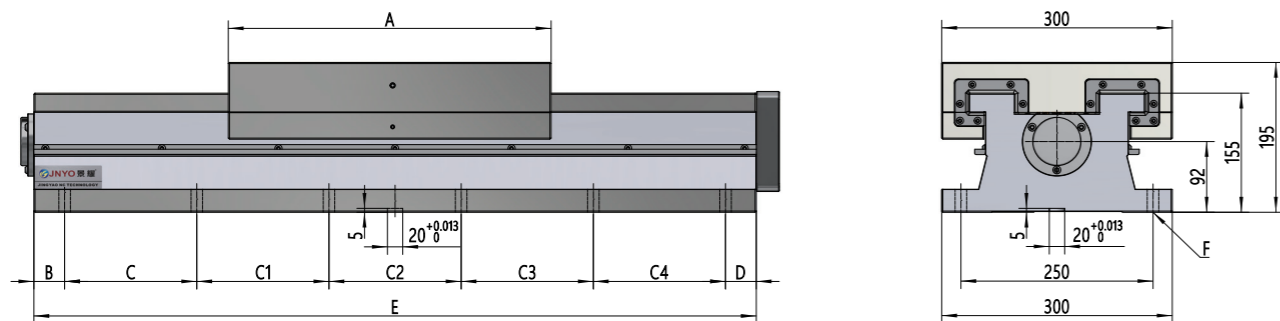
URS300

数控硬轨滑台 NC hard rail slide

Made in China Spirit in Global



- 导轨防护罩、伺服电机可根据需求加装配置。
Guide shield and servo motor can be configured according to requirements.



产品参数 PRODUCT PARAMETERS

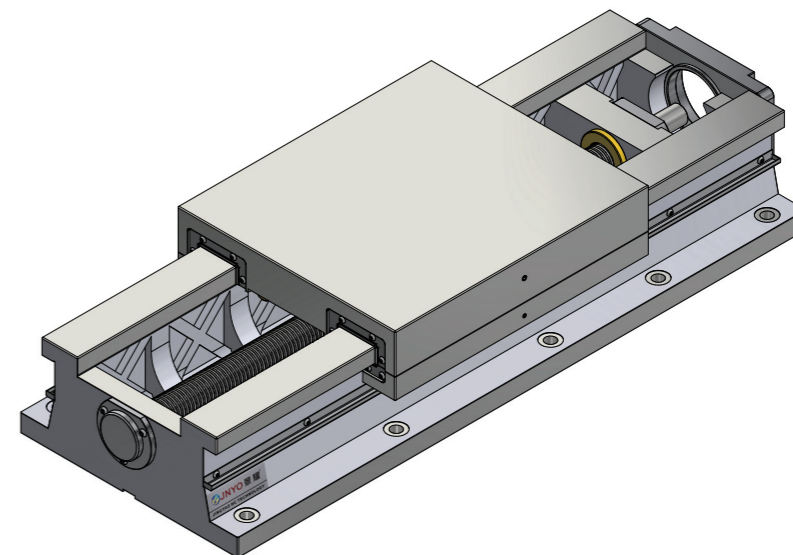
型 号 Model	A	B	C	C1	C2	C3	C4	D	E	F	滚珠丝杠 Ball screw	轴 径 Shaft diameter	行 程 Stroke
URS300x420	300	25	115	115	--	--	--	35	420	8-Φ17	Φ40x6	Φ25	120
URS300x560	300	35	135	220	135	--	--	35	560	8-Φ17			260
	420												140
URS300x670	300	35	115	205	165	115	--	35	670	10-Φ17			370
	420												250
URS300x800	300	35	285	280	165	--	--	35	800	8-Φ17			500
	420												380
URS300x940	420	40	247	255	178	180	--	40	940	10-Φ17			520
URS300x1200	420	40	240	200	280	200	200	40	1200	12-Φ17			780

◆本公司不断进行研发改进更新设计、规格、结构等，恕不另行通知，本表仅供参考，详细与营销部联系（0576-80235999）

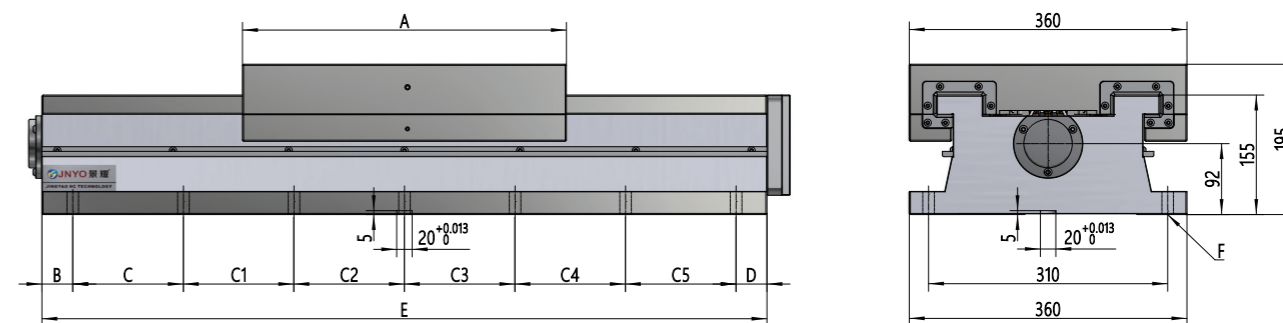
URS360

数控硬轨滑台 NC hard rail slide

Made in China Spirit in Global



- 导轨防护罩、伺服电机可根据需求加装配置。
Guide shield and servo motor can be configured according to requirements.



产品参数 PRODUCT PARAMETERS

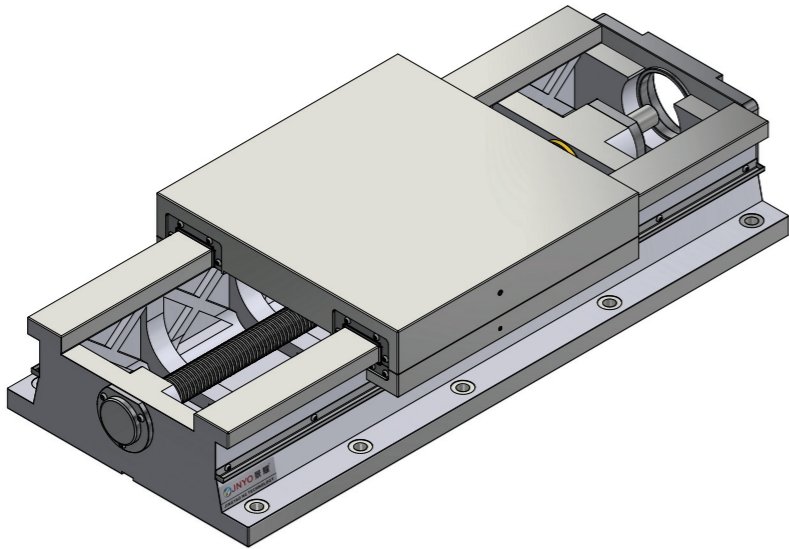
型号 Model	A	B	C	C1	C2	C3	C4	C5	D	E	F	滚珠丝杠 Ball screw	轴 径 Shaft diameter	行程 Stroke
URS360x560	420	35	135	220	135	--	--	--	35	560	8-Φ17	Φ40x6	Φ25	140
URS360x670	420	35	115	205	165	115	--	--	35	670	10-Φ17			250
URS360x800	420	35	285	280	165	--	--	--	35	800	8-Φ17			380
URS360x940	420	40	247	255	178	180	--	--	40	940	10-Φ17			520
URS360x1200	600	40	240	200	280	200	200	--	40	1200	12-Φ17			600
URS360x1600	600	40	260	260	260	260	260	220	40	1600	14-Φ17			1000
URS360x1800	600	40	344	344	344	344	344	--	40	1800	12-Φ17			1200

◆本公司不断进行研发改进更新设计、规格、结构等，恕不另行通知，本表仅供参考，详细与营销部联系（0576-80235999）

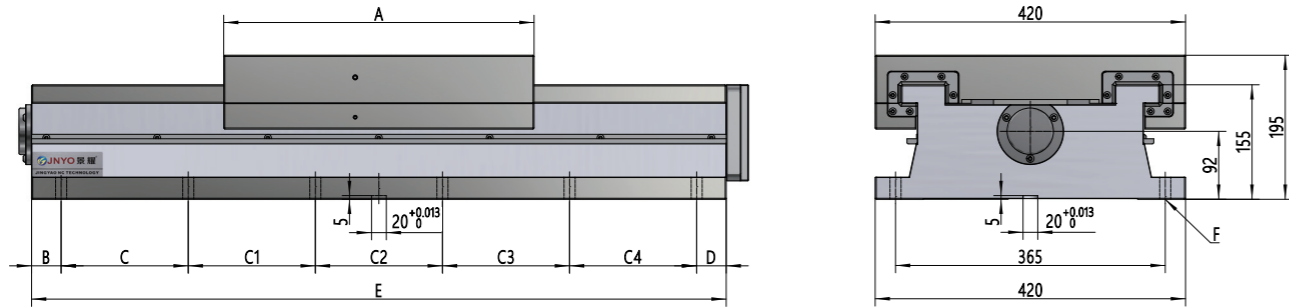
URS420

数控硬轨滑台 NC hard rail slide

Made in China Spirit in Global



- 导轨防护罩、伺服电机可根据需求加装配置。
Guide shield and servo motor can be configured according to requirements.



产品参数

PRODUCT PARAMETERS

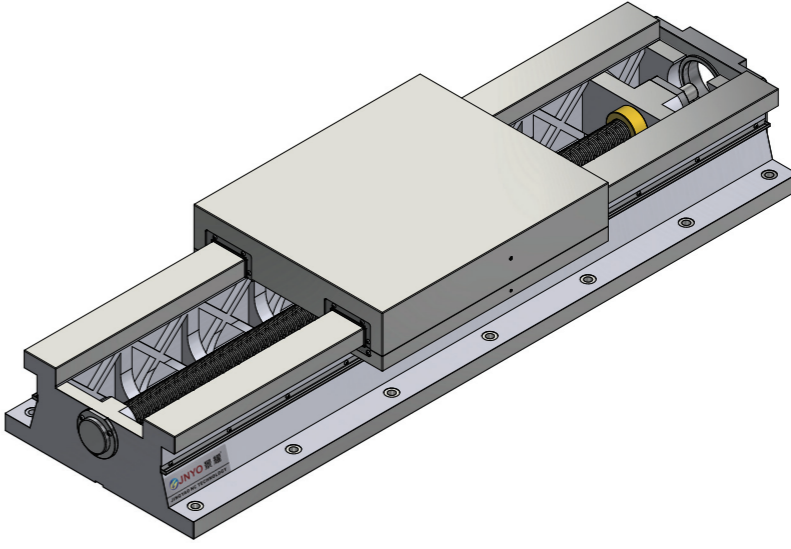
型 号 Model	A	B	C	C1	C2	C3	C4	D	E	F	滚珠丝杠 Ball screw	轴 径 Shaft diameter	行 程 Stroke
URS420x670	420	35	115	205	165	115	--	35	670	10-Φ17	Φ40x5	Φ25	250
	520												150
URS420x940	420	40	247	255	178	180	--	40	940	10-Φ17			520
	520												420
URS420x1200	420	40	240	200	280	200	200	40	1200	12-Φ17			780
	520												680

◆本公司不断进行研发改进更新设计、规格、结构等，恕不另行通知，本表仅供参考，详细与营销部联系（0576-80235999）

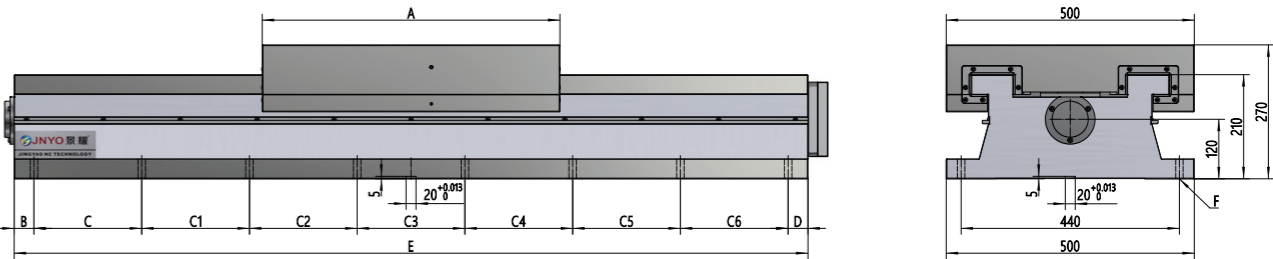
URS500

数控硬轨滑台 NC hard rail slide

Made in China Spirit in Global



- 导轨防护罩、伺服电机可根据需求加装配置。
Guide shield and servo motor can be configured according to requirements.



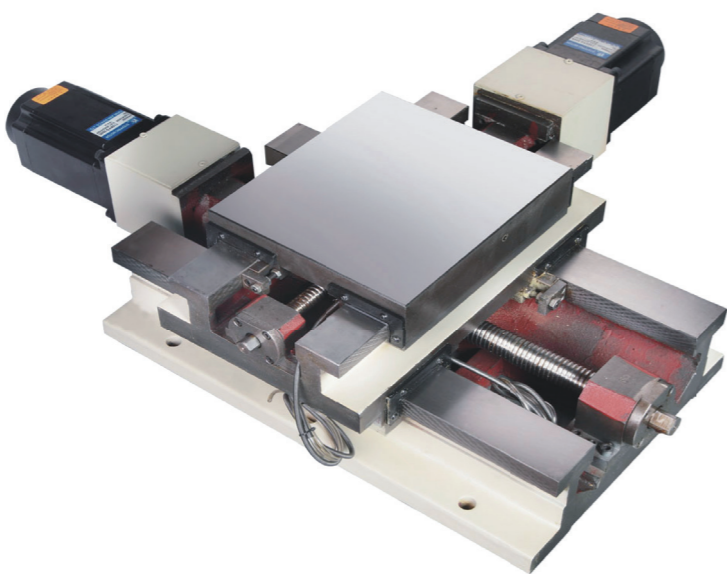
产品参数 PRODUCT PARAMETERS																
型 号 Model	A	B	C	C1	C2	C3	C4	C5	C6	D	E	F	滚珠丝杠 Ball screw	轴 径 Shaft diameter	行 程 Stroke	
URS500x880	600	40	220	240	170	170	--	--	--	40	880	10-Φ17	Φ50x8	Φ32	280	
URS500x1000	600	50	225	225	225	225	--	--	--	50	1000	10-Φ17			400	
URS500x1600	600	40	260	260	260	260	260	220	--	40	1600	14-Φ17			1000	
	950														650	
URS500x2000	600	70	180	300	300	300	300	300	180	70	2000	16-Φ17			1400	
	950														1050	

◆本公司不断进行研发改进更新设计、规格、结构等，恕不另行通知，本表仅供参考，详细与营销部联系（0576-80235999）

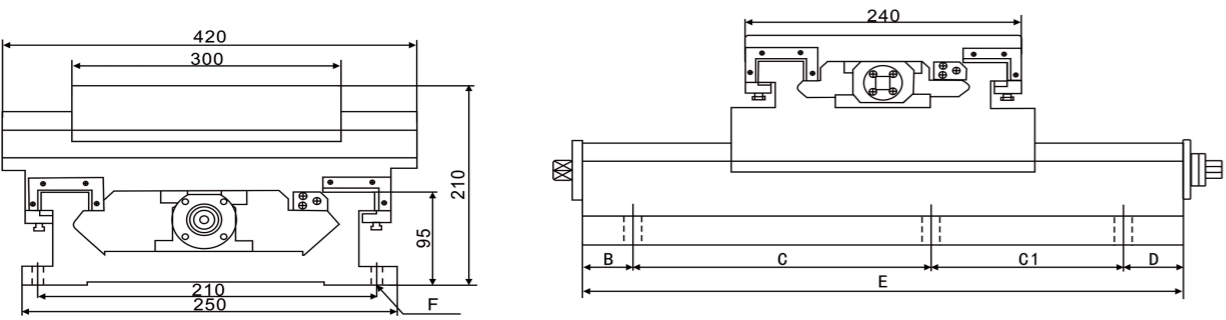
BRS1812

数控十字矩形滑台
CNC Cross Rectangle Sliding Table

Made in China Spirit in Global



- 导轨防护罩、伺服电机功率及转矩可根据需求配置。
Guide rail shield, power and torque of servo motor can be provided as required.



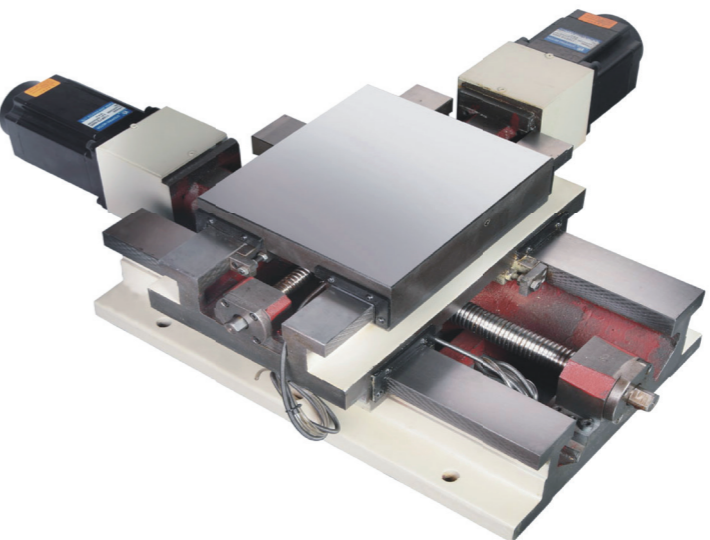
产品参数 PRODUCT PARAMETERS											
型 号 Model	工作台 Stage	B	C	C1	D	E	F	滚珠规格 Ball screw	轴 径 Shaft diameter	上行程 UP Stroke	下行程 Down Stroke
BRS1812	240x300	25	230	130	35	420	6-Φ15	上 (UP) Φ20x5	Φ17	120	180
								下 (Down) Φ25x5	Φ22		

◆本公司不断进行研发改进更新设计、规格、结构等，恕不另行通知，本表仅供参考，详细与营销部联系（0576-80235999）

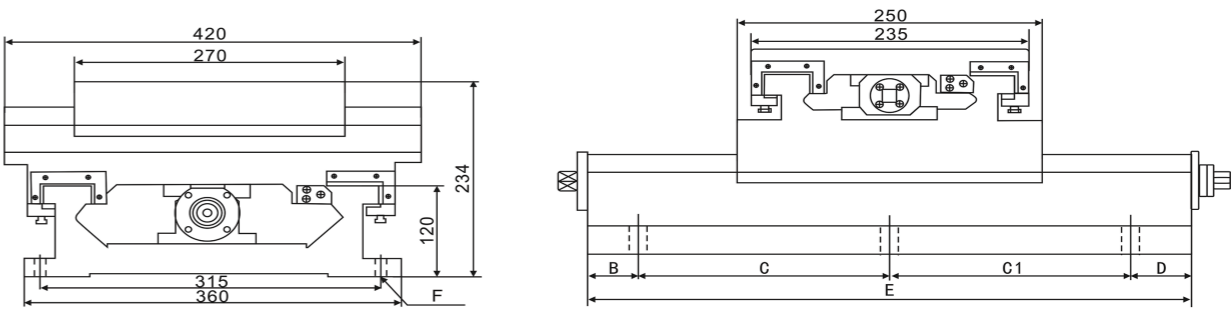
BRS3015

数控十字矩形滑台
CNC Cross Rectangle
Sliding Table

Made in China Spirit in Global



- 导轨防护罩、伺服电机功率及转矩可根据需求配置。
Guide rail shield, power and torque of servo motor can be provided as required.



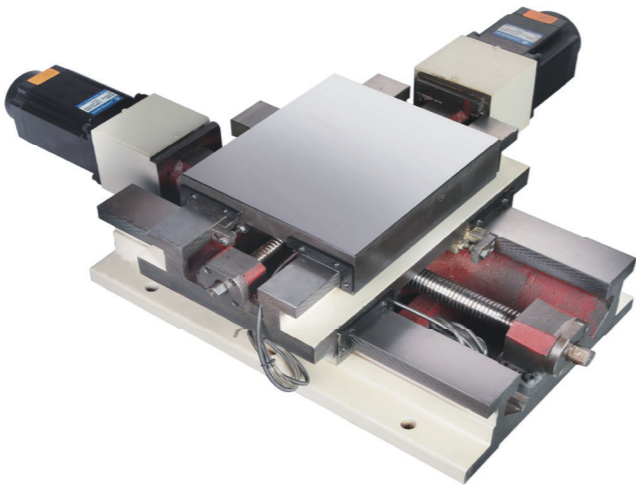
产品参数 PRODUCT PARAMETERS											
型 号 Model	工作台 Stage	B	C	C1	D	E	F	滚珠规格 Ball screw	轴 径 Shaft diameter	上行程 UP Stroke	下行程 Down Stroke
BRS3015	235x270	85	190	190	85	550	6-Φ17	上 (UP) Φ20x5	Φ17	150	300
								下 (Down) Φ32x5	Φ28		

◆本公司不断进行研发改进更新设计、规格、结构等，恕不另行通知，本表仅供参考，详细与营销部联系（0576-80235999）

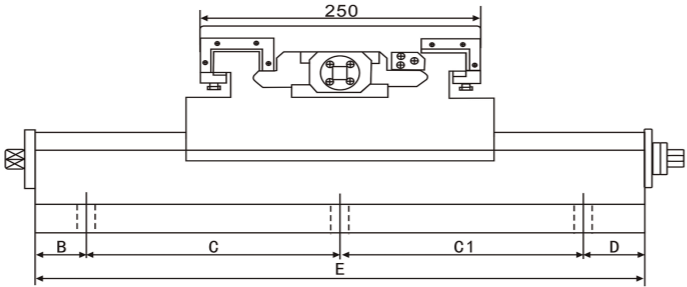
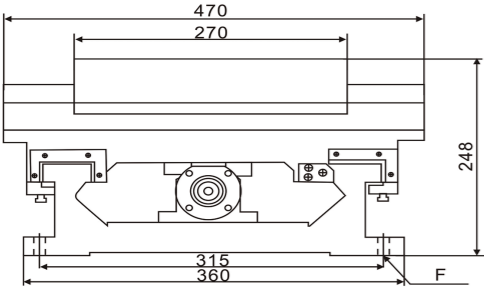
BRS3020

数控十字矩形滑台
CNC Cross Rectangle Sliding Table

Made in China Spirit in Global



● 导轨防护罩、伺服电机功率及转矩可根据需求配置。
Guide rail shield, power and torque of servo motor can be provided as required.



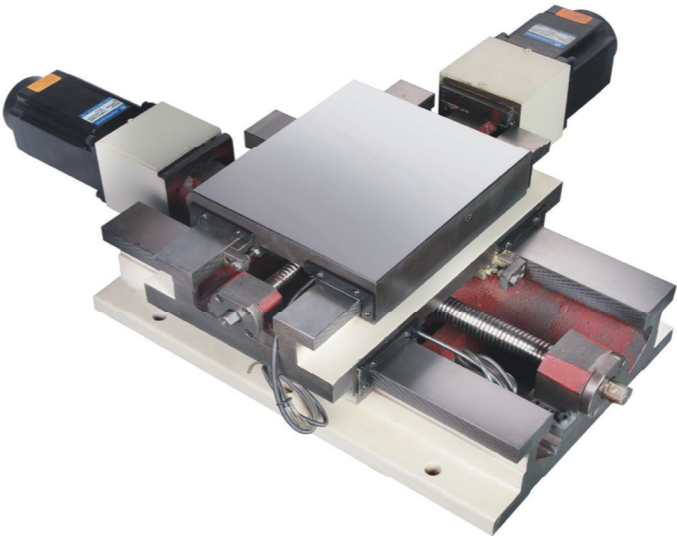
产品参数 PRODUCT PARAMETERS											
型 号 Model	工作台 Stage	B	C	C1	D	E	F	滚珠规格 Ball screw	轴 径 Shaft diameter	上行程 UP Stroke	下行程 Down Stroke
BRS3020	250x270	85	190	190	85	550	6-Φ17	上 (UP) Φ20x5	Φ17	200	300
								下 (Down) Φ32x5	Φ28		

◆本公司不断进行研发改进更新设计、规格、结构等，恕不另行通知，本表仅供参考，详细与营销部联系（0576-80235999）

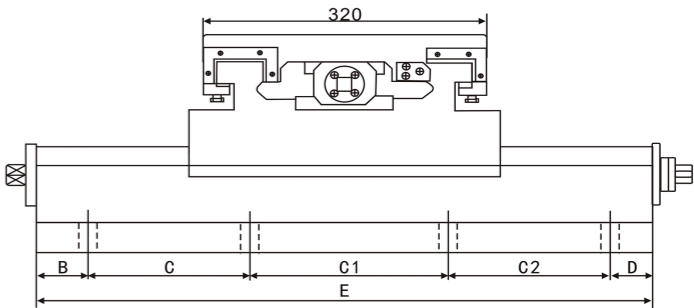
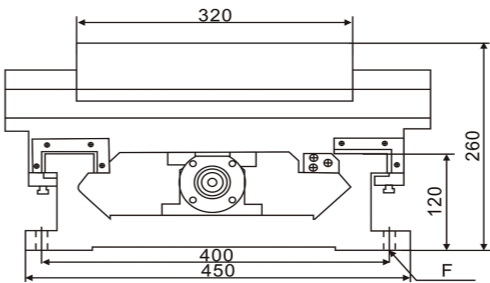
BRS3520

数控十字矩形滑台
CNC Cross Rectangle
Sliding Table

Made in China Spirit in Global



● 导轨防护罩、伺服电机功率及转矩可根据需求配置。
Guide rail shield, power and torque of servo motor can be provided as required.



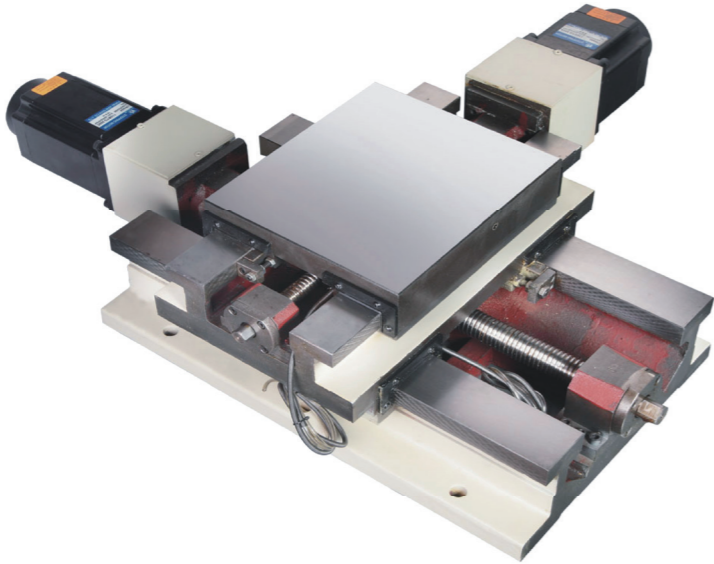
产品参数 PRODUCT PARAMETERS												
型 号 Model	工作台 Stage	B	C	C1	C2	D	E	F	滚珠规格 Ball screw	轴 径 Shaft diameter	上行程 UP Stroke	下行程 Down Stroke
BRS3520	250x270	50	200	200	200	50	700	8-Φ17	UPΦ25x5	Φ22	200	350
									DownΦ32x5	Φ28		

◆本公司不断进行研发改进更新设计、规格、结构等，恕不另行通知，本表仅供参考，详细与营销部联系（0576-80235999）

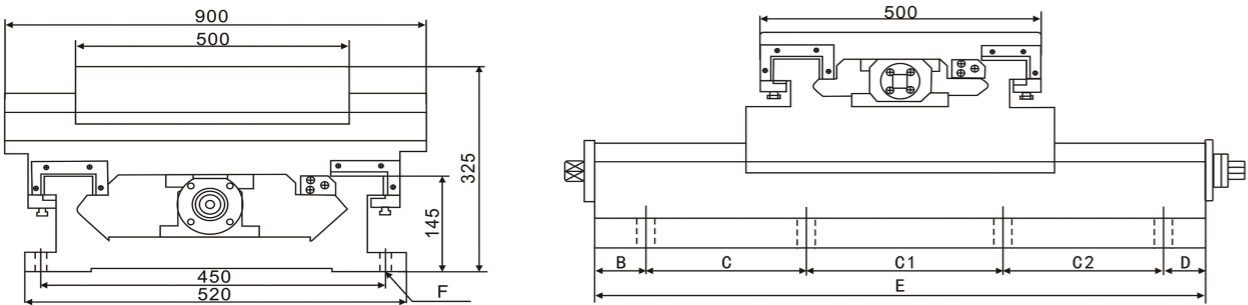
BRS5040

Made in China Spirit in Global

数控十字矩形滑台
CNC Cross Rectangle Sliding Table



● 导轨防护罩、伺服电机功率及转矩可根据需求配置。
Guide rail shield, power and torque of servo motor can be provided as required.



产品参数 PRODUCT PARAMETERS

型号 Model	工作台 Stage	B	C	C1	C2	D	E	F	滚珠规格 Ball screw	轴径 Shaft diameter	上行程 UP Stroke	下行程 Down Stroke
BRS5040	500x500	95	270	270	270	95	1000	8-Φ17	上 (UP) Φ40x10 下 (Down) Φ40x10	Φ32 Φ32	400	500

◆ 本公司不断进行研发改进更新设计、规格、结构等，恕不另行通知，本表仅供参考，详细与营销部联系（0576-80235999）

模块化组合案例
Modular combination case



伺服展刀动力头
Servo drive head



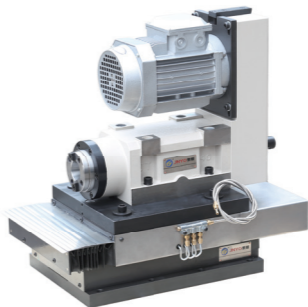
液压卡盘动力头
Hydraulic chuck power head



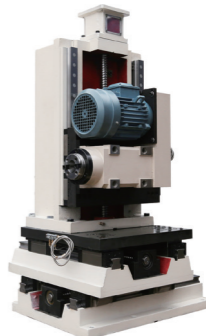
伺服多轴钻攻动力头
Servo multi axis drilling power head



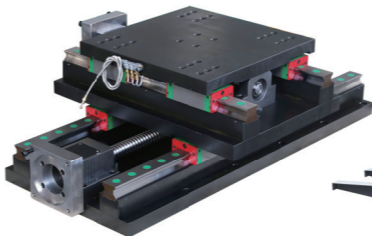
动力头 + 数控十字滑台
+ 分度盘
Power head + CNC cross slide table
+ indexing plate



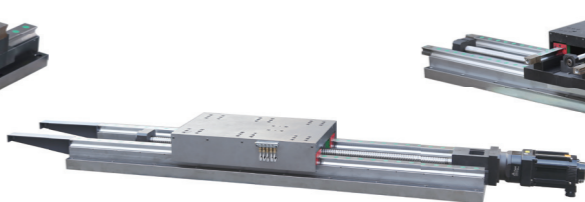
动力头 + 线轨滑台
Power head + line rail slide



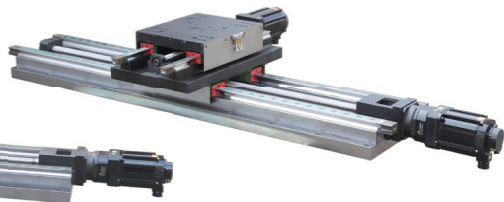
动力头 + 立式滑台
+ 数控十字滑台
Power head + vertical slide platform
+ CNC cross slide



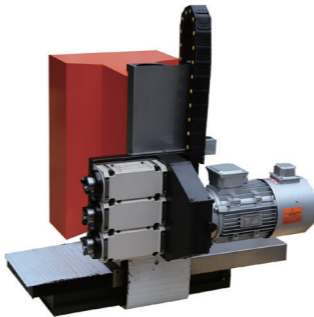
非标定制线轨
十字滑台
Non standard custom line
rail cross slide table



非标线轨滑台
Non marking rail slide



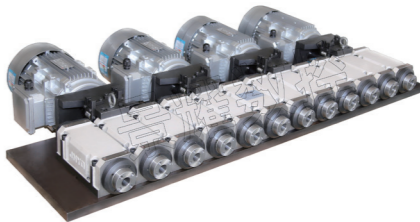
非标定制线轨
十字滑台
Non standard custom line
rail cross slide table



非标动力头
Nonstandard power head



非标动力头
Nonstandard power head



非标动力头
Nonstandard power head

其他功能部件（可定制）
Other functional components (customizable)



两轴可调多轴器
Two axis adjustable multi axis device



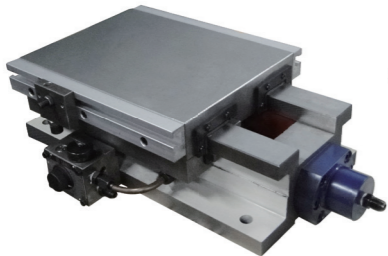
三轴外可调多轴器
Three axis adjustable multi axis device



三轴内可调多轴器
Three axis adjustable multi axis device



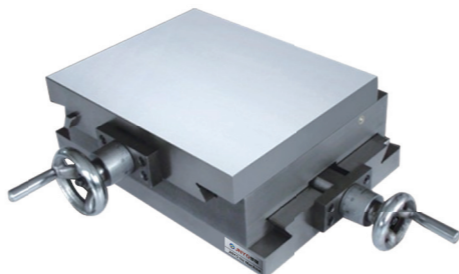
四轴可调多轴器
Four axis adjustable multi axis device



液压矩形滑台
Rectangular hydraulic slipway



单向燕尾滑台
A one-way dovetail slide



十字燕尾滑台
A cross slide



立式燕尾滑台
Vertical dovetail slide



数控立柱矩形滑台
CNC slide rectangular column



数控立柱矩形滑台
CNC slide rectangular column

一站式代理采购，您信赖的合作伙伴
One stop acting as agent for the purchase, you trust the partner



罗拓福斯旋转接头
Rotoflux rotary unions



主轴
Principal axis



同步带轮
Synchronous pulley



数控系统
Numerical control system



数控回转盘
CNC turntable



行星减速机
Planetary reducer



联轴器
Pneumatic finger



打刀缸
Play knife cylinder



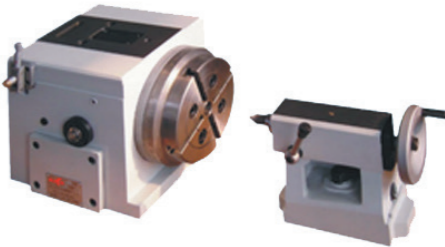
卧式支架
Horizontal support



万向支架
气动钻削动力头
Universal bracket
Pneumatic drill power head



立式支架
Vertical bracket



数控分度头
CNC dividing head



RVS 系列自动进给钻削动力头
RVS series automatic feed drilling power head



RTBS 系列伺服精密同步攻丝动力头
RTBS series servo precision synchronous tapping power head



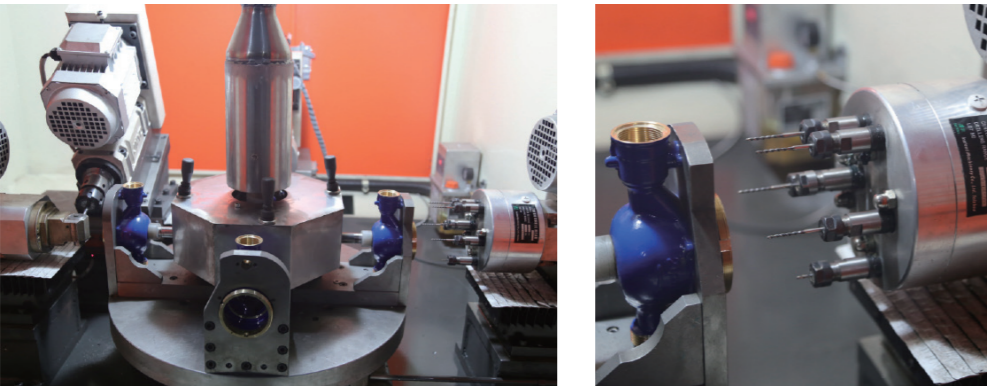
伺服驱动器
Servo drive



伺服电机
Servo motor

Modular modular
machine tool

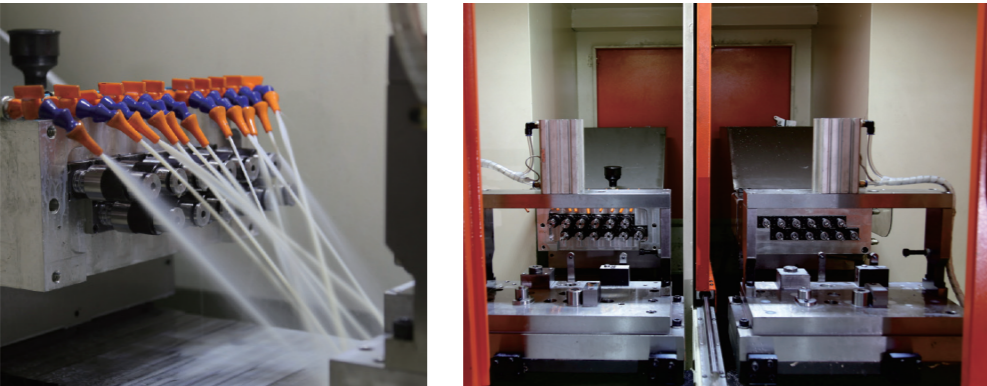
模块化组合专用机床



转盘式专机
Turntable special machine



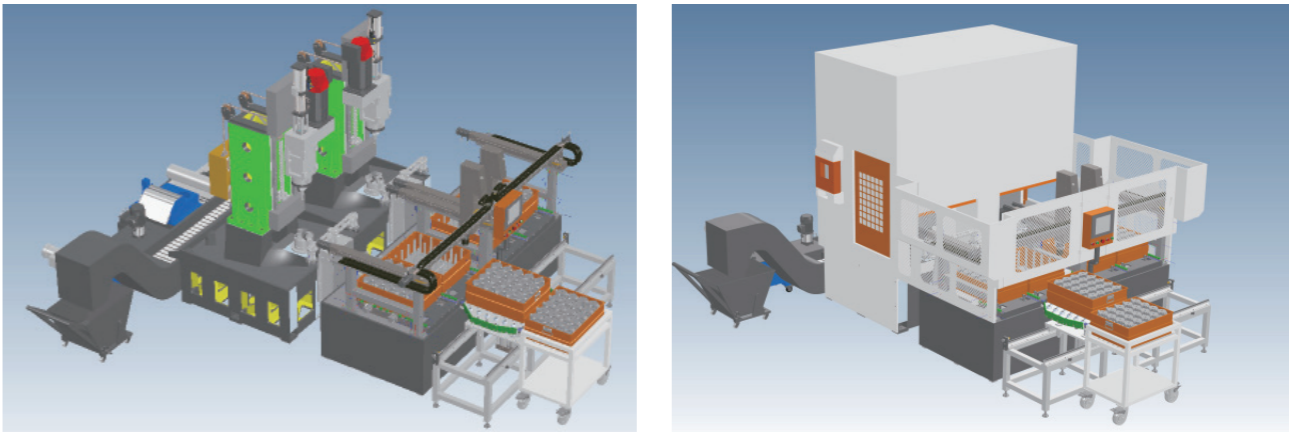
数控旋压机
CNC spinning machine



多轴中心钻攻专机
Multi axis center drilling special machine

Intelligent flexible
production line

智能柔性生产线



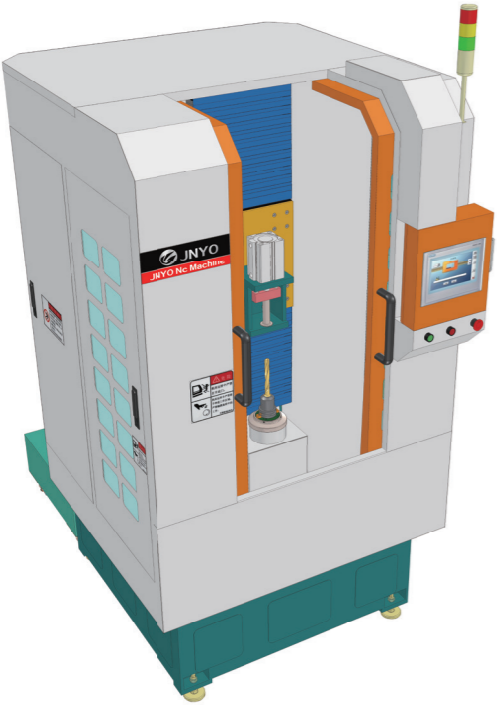
机床主要应用于零件单孔的高速钻孔加工，可使用 U 钻或硬质合金钻头进行内冷高速钻孔；可实现自动化、高精度、大批量生产。该设备运用了主轴中心内冷 + 自动上料技术。以 1200mm/ 分钟的高效进给达到 14 秒两件工件加工完成，达到了高速稳定生产。解决了用户提高劳动生产率，稳定和提高产品质量，改善劳动条件，缩减生产占地面积，降低生产成本，缩短生产周期，保证生产均衡性。



专用机床
Special machine tool



双主轴双刀库立式加工中心
Double spindle double knife vertical machining center



CNC 立式反向深孔 U 钻专机
CNC Vertical reverse deep hole U drilling machine



CNC 三 / 双面铣床
CNC Three / double side milling machine



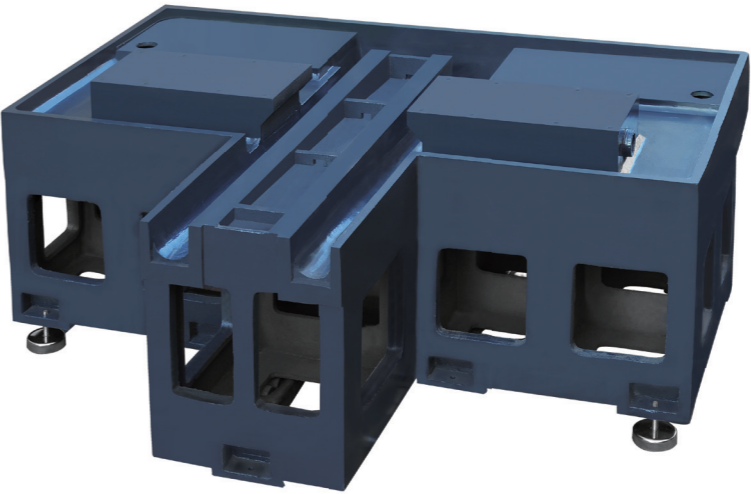
CNC 双面钻 / 镗孔专机
CNC Double sided drilling / boring machine



CNC 转盘式多工位专机
CNC Rotary multi station

铸造床身
Casting bed

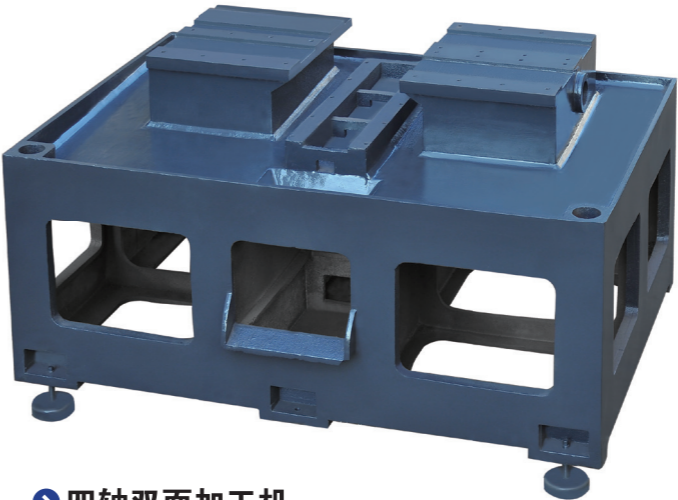
可定制各种机床铸造床身
Can customize a variety of machine tool bed casting



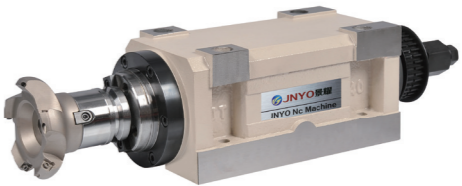
▶ 双面铣床床身
Double sided milling machine bed



▶ 双主轴立式加工机
Double spindle vertical machine



▶ 四轴双面加工机
Four axis double side machine



NT40-1 配面铣刀盘
NT40-1 face milling cutter



NT30-1 配 ER 刀柄
NT30-1 with ER tool



NT40-2 配 U 钻、中心出水旋转接头
NT40-2 with U drill, the center of the water swivel joint